

Syk antibody [N2C2], Internal

Cat. No. GTX100748

Host	Rabbit
Clonality	Polyclonal
Isotype	IgG
Application	WB, ICC/IF, IHC-P, IP
Reactivity	Human, Mouse, Rat

Reference (4)

Package

100 µl, 25 µl

APPLICATION

Application Note

*Optimal dilutions/concentrations should be determined by the researcher.

Suggested dilution	Recommended dilution
WB	1:500-1:3000
ICC/IF	1:100-1:1000
IHC-P	1:100-1:1000
IP	1:100-1:500

Not tested in other applications.

Calculated MW 72 kDa. ([Note](#))

PROPERTIES

Form	Liquid
Buffer	PBS, 20% Glycerol
Preservative	0.025% ProClin 300
Storage	Store as concentrated solution. Centrifuge briefly prior to opening vial. For short-term storage (1-2 weeks), store at 4°C. For long-term storage, aliquot and store at -20°C or below. Avoid multiple freeze-thaw cycles.
Concentration	0.32 mg/ml (Please refer to the vial label for the specific concentration.)
Immunogen	Recombinant protein encompassing a sequence within the center region of human Syk. The exact sequence is proprietary.
Purification	Purified by antigen-affinity chromatography.
Conjugation	Unconjugated

Note

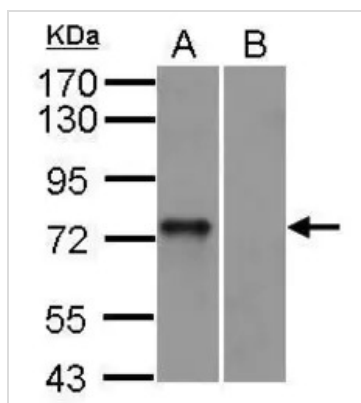
For laboratory research use only. Not for any clinical, therapeutic, or diagnostic use in humans or animals. Not for animal or human consumption.

Purchasers shall not, and agree not to enable third parties to, analyze, copy, reverse engineer or otherwise attempt to determine the structure or sequence of the product.



For full product information, images and publications, please visit our [website](#).

DATA IMAGES



GTX100748 WB Image

SYK antibody [N2C2], Internal detects SYK protein by western blot analysis.

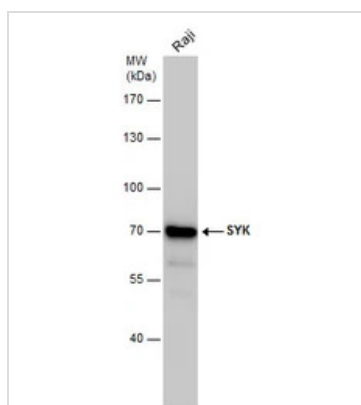
A. 30 μ g mouse BMDM (bone marrow-derived macrophage) cells

B. 30 μ g mouse Syk null cells

10% SDS-PAGE

SYK antibody [N2C2], Internal (GTX100748) dilution: 1:1000

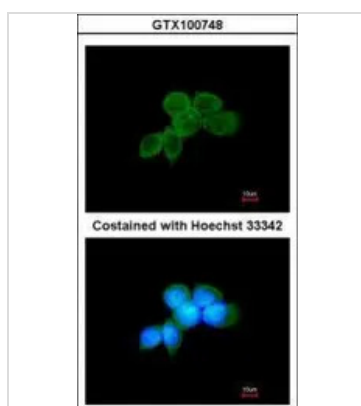
The HRP-conjugated anti-rabbit IgG antibody (GTX213110-01) was used to detect the primary antibody.



GTX100748 WB Image

SYK antibody detects SYK protein by western blot analysis. Whole cell extracts (30 μ g) was separated by 7.5% SDS-PAGE, and the membrane was blotted with SYK antibody (GTX100748) at a dilution of 1:2000.

The HRP-conjugated anti-rabbit IgG antibody (GTX213110-01) was used to detect the primary antibody.



GTX100748 ICC/IF Image

Immunofluorescence analysis of methanol-fixed A431, using SYK(GTX100748) antibody at 1:200 dilution.



For full product information, images and publications, please visit our [website](https://www.genetex.com).