

RRM1 antibody

Cat. No. GTX100758

Host	Rabbit
Clonality	Polyclonal
Isotype	IgG
Applications	WB, ICC/IF, IHC-P
Reactivity	Human, Mouse

References (3)

Package

100 µl, 25 µl

Applications

Application Note

*Optimal dilutions/concentrations should be determined by the researcher.

Suggested dilution	Recommended dilution
WB	1:500-1:3000
ICC/IF	1:100-1:1000
IHC-P	1:100-1:1000

Not tested in other applications.

Calculated MW 90 kDa. ([Note](#))

Properties

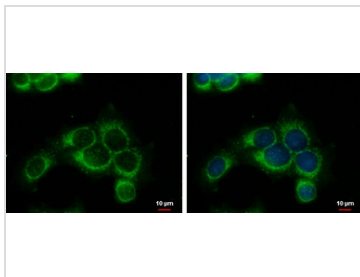
Form	Liquid
Buffer	PBS, 1% BSA, 20% Glycerol
Preservative	0.025% ProClin 300
Storage	Store as concentrated solution. Centrifuge briefly prior to opening vial. For short-term storage (1-2 weeks), store at 4°C. For long-term storage, aliquot and store at -20°C or below. Avoid multiple freeze-thaw cycles.
Concentration	0.49 mg/ml (Please refer to the vial label for the specific concentration.)
Immunogen	Recombinant protein encompassing a sequence within the center region of human RRM1. The exact sequence is proprietary.
Purification	Purified by antigen-affinity chromatography.
Conjugation	Unconjugated

Note

For laboratory research use only. Not for any clinical, therapeutic, or diagnostic use in humans or animals. Not for animal or human consumption.

Purchasers shall not, and agree not to enable third parties to, analyze, copy, reverse engineer or otherwise attempt to determine the structure or sequence of the product.

For full product information, images and publications, please visit our [website](#).

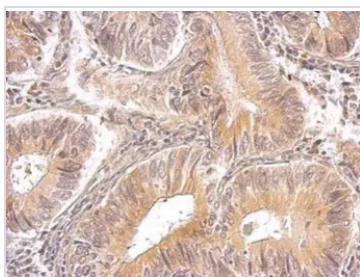
DATA IMAGES

GTx100758 ICC/IF Image

RRM1 antibody detects RRM1 protein at cytoplasm by immunofluorescent analysis.

Sample: MCF-7 cells were fixed in ice-cold MeOH for 5 min.

Green: RRM1 protein stained by RRM1 antibody (GTx100758) diluted at 1:1000.

Blue: Hoechst 33342 staining.

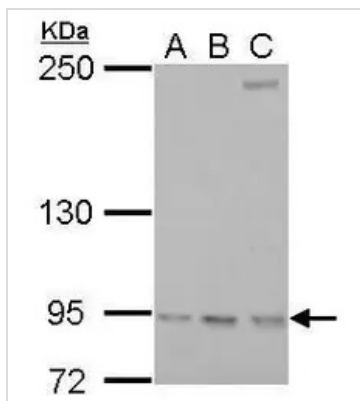

GTx100758 IHC-P Image

RRM1 antibody detects RRM1 protein on human gastric cancer by immunohistochemical analysis.

Sample: Paraffin-embedded gastric cancer.

RRM1 antibody (GTx100758) dilution: 1:500.

Antigen Retrieval: Trilogy™ (EDTA based, pH 8.0) buffer, 15min


GTx100758 WB Image

RRM1 antibody detects RRM1 protein by Western blot analysis.

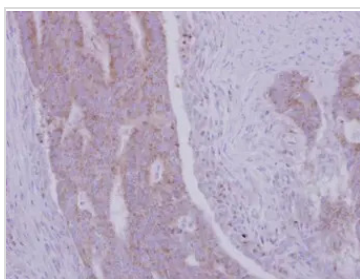
A. 30 µg NIH-3T3 whole cell lysate/extract

B. 30 µg Raw264.7 whole cell lysate/extract

C. 30 µg C2C12 whole cell lysate/extract

5 % SDS-PAGE

RRM1 antibody (GTx100758) dilution: 1:1000


GTx100758 IHC-P Image

Immunohistochemical analysis of paraffin-embedded human colon carcinoma, using RRM1(GTx100758) antibody at 1:500 dilution.

Antigen Retrieval: Trilogy™ (EDTA based, pH 8.0) buffer, 15min



For full product information, images and publications, please visit our [website](http://www.genetex.com).