

IL1 beta antibody

Cat. No. GTX100793

Host	Rabbit
Clonality	Polyclonal
Isotype	IgG
Application	WB, ICC/IF, IHC-P
Reactivity	Human, Mouse

Reference (1)

★★★★☆ Review (1)

Package

100 µl, 25 µl

APPLICATION

Application Note

*Optimal dilutions/concentrations should be determined by the researcher.

Suggested dilution	Recommended dilution
WB	1:500-1:3000
ICC/IF	1:100-1:1000
IHC-P	1:100-1:1000

Not tested in other applications.

Calculated MW 31 kDa. ([Note](#))

PROPERTIES

Form	Liquid
Buffer	0.1M Tris, 0.1M Glycine, 10% Glycerol
Preservative	0.01% Thimerosal
Storage	Store as concentrated solution. Centrifuge briefly prior to opening vial. For short-term storage (1-2 weeks), store at 4°C. For long-term storage, aliquot and store at -20°C or below. Avoid multiple freeze-thaw cycles.
Concentration	1 mg/ml (Please refer to the vial label for the specific concentration.)
Immunogen	Recombinant protein encompassing a sequence within the center region of human IL1 beta. The exact sequence is proprietary.
Purification	Purified by antigen-affinity chromatography.
Conjugation	Unconjugated

Note

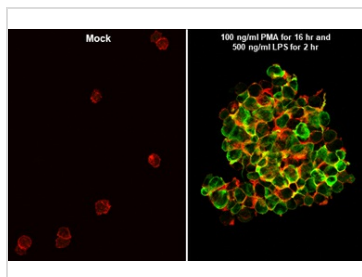
For laboratory research use only. Not for any clinical, therapeutic, or diagnostic use in humans or animals. Not for animal or human consumption.

Purchasers shall not, and agree not to enable third parties to, analyze, copy, reverse engineer or otherwise attempt to determine the structure or sequence of the product.



For full product information, images and publications, please visit our [website](#).

DATA IMAGES



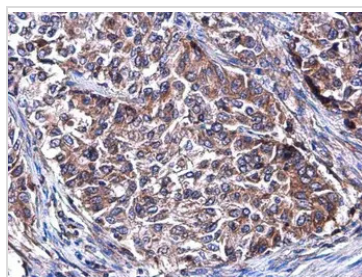
GTx100793 ICC/IF Image

IL1 beta antibody detects IL1 beta protein by immunofluorescent analysis.

Sample: Mock and treated THP-1 cells were fixed in 4% paraformaldehyde at RT for 15 min.

Green: IL1 beta stained by IL1 beta antibody (GTx100793) diluted at 1:500.

Red: phalloidin, a cytoskeleton marker, stained by phalloidin (phalloidin) diluted at 1:100.



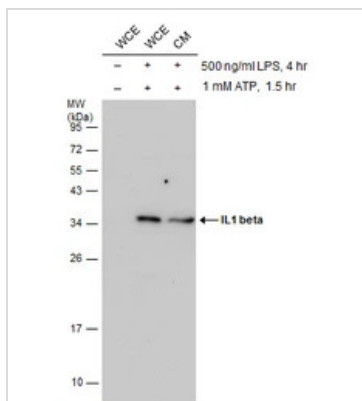
GTx100793 IHC-P Image

IL1 beta antibody [N1C3] detects IL1B protein at cytoplasm in human lung cancer by immunohistochemical analysis.

Sample: Paraffin-embedded human lung cancer.

IL1 beta antibody [N1C3] (GTx100793) diluted at 1:500.

Antigen Retrieval: Citrate buffer, pH 6.0, 15 min



GTx100793 WB Image

Untreated (-) and treated (+) THP-1 whole cell extracts (30 µg) were separated by 12% SDS-PAGE, and the membrane was blotted with IL1 beta antibody [N1C3] (GTx100793) diluted at 1:500. (WCE: whole cell extract; CM: conditioned medium)



For full product information, images and publications, please visit our [website](https://www.genetex.com).