

14-3-3 sigma antibody

Cat. No. GTX100801

Host	Rabbit
Clonality	Polyclonal
Isotype	IgG
Applications	WB, ICC/IF, IHC-P, IP
Reactivity	Human, Mouse

References (9)

Package

100 µl, 25 µl

Applications

Application Note

*Optimal dilutions/concentrations should be determined by the researcher.

Suggested dilution	Recommended dilution
WB	1:500-1:10000
ICC/IF	1:100-1:1000
IHC-P	1:100-1:1000
IP	1:100-1:500

Not tested in other applications.

Calculated MW 28 kDa. ([Note](#))

Properties

Form	Liquid
Buffer	0.1M Tris, 0.1M Glycine, 10% Glycerol
Preservative	0.01% Thimerosal
Storage	Store as concentrated solution. Centrifuge briefly prior to opening vial. For short-term storage (1-2 weeks), store at 4°C. For long-term storage, aliquot and store at -20°C or below. Avoid multiple freeze-thaw cycles.
Concentration	0.32 mg/ml (Please refer to the vial label for the specific concentration.)
Immunogen	Recombinant protein encompassing a sequence within the center region of human 14-3-3 sigma. The exact sequence is proprietary.
Purification	Purified by antigen-affinity chromatography.
Conjugation	Unconjugated



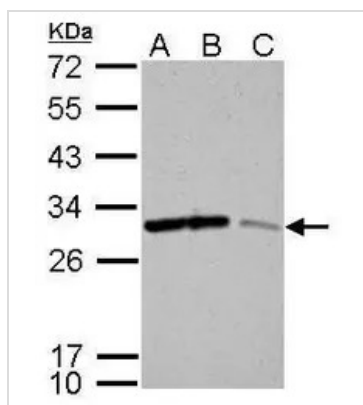
For full product information, images and publications, please visit our [website](#).

For laboratory research use only. Not for any clinical, therapeutic, or diagnostic use in humans or animals. Not for animal or human consumption.

Note

Purchasers shall not, and agree not to enable third parties to, analyze, copy, reverse engineer or otherwise attempt to determine the structure or sequence of the product.

DATA IMAGES



GTX100801 WB Image

14-3-3 sigma antibody detects SFN protein by western blot analysis.

A. 30 μ g Neuro2A whole cell lysate/extract

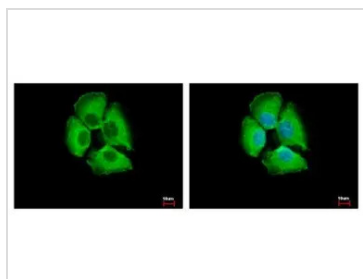
B. 30 μ g GL261 whole cell lysate/extract

C. 30 μ g C8D30 whole cell lysate/extract

12% SDS-PAGE

14-3-3 sigma antibody (GTX100801) dilution: 1:5000

The HRP-conjugated anti-rabbit IgG antibody (GTX213110-01) was used to detect the primary antibody.



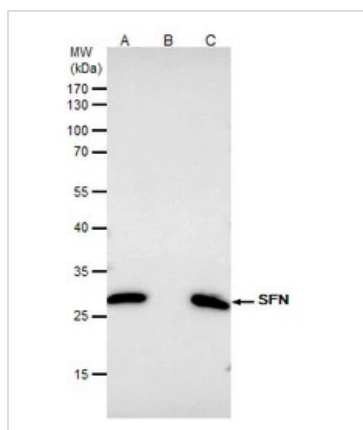
GTX100801 ICC/IF Image

14-3-3 sigma antibody detects 14-3-3 sigma protein at cytoplasm by immunofluorescent analysis.

Sample: A431 cells were fixed in 4% paraformaldehyde at RT for 15 min.

Green: 14-3-3 sigma protein stained by 14-3-3 sigma antibody (GTX100801) diluted at 1:500.

Blue: Hoechst 33343 staining.



GTX100801 IP Image

14-3-3 sigma antibody immunoprecipitates SFN protein in IP experiments.

IP samples: A431 whole cell extract

A. 40 μ g A431 whole cell extract

B. Control with 4 μ g of preimmune Rabbit IgG

C. Immunoprecipitation of SFN protein by 4 μ g 14-3-3 sigma antibody (GTX100801)

5 % SDS-PAGE

The immunoprecipitated SFN protein was detected by 14-3-3 sigma antibody (GTX100801) diluted at 1:500.

[EasyBlot anti-rabbit IgG (GTX221666-01) was used as a secondary reagent]



For full product information, images and publications, please visit our [website](https://www.genetex.com).