

EPO antibody

Cat. No. GTX100813

Host	Rabbit
Clonality	Polyclonal
Isotype	IgG
Applications	WB, IHC-P, ELISA
Reactivity	Human, Rat

Package
100 µl, 25 µl

Applications

Application Note

*Optimal dilutions/concentrations should be determined by the researcher.

Suggested dilution	Recommended dilution
WB	1:5000-1:20000
IHC-P	1:100-1:1000
ELISA	1:1000-1:10000

Not tested in other applications.

Calculated MW 21 kDa. ([Note](#))

Properties

Form	Liquid
Buffer	PBS, 20% Glycerol
Preservative	0.025% ProClin 300
Storage	Store as concentrated solution. Centrifuge briefly prior to opening vial. For short-term storage (1-2 weeks), store at 4°C. For long-term storage, aliquot and store at -20°C or below. Avoid multiple freeze-thaw cycles.
Concentration	0.68 mg/ml (Please refer to the vial label for the specific concentration.)
Immunogen	Recombinant protein encompassing a sequence within the center region of human EPO. The exact sequence is proprietary.
Purification	Purified by antigen-affinity chromatography.
Conjugation	Unconjugated

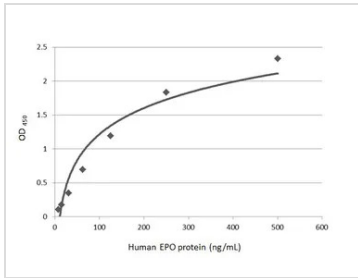
Note

For laboratory research use only. Not for any clinical, therapeutic, or diagnostic use in humans or animals. Not for animal or human consumption.

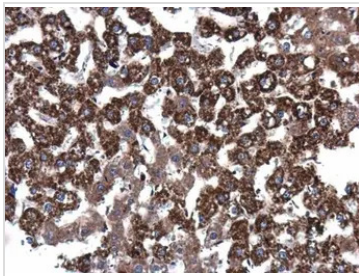
Purchasers shall not, and agree not to enable third parties to, analyze, copy, reverse engineer or otherwise attempt to determine the structure or sequence of the product.



For full product information, images and publications, please visit our [website](#).

DATA IMAGES

GTx100813 ELISA Image

Indirect ELISA analysis was performed by coating the plate with recombinant E.coli expressed, full-length human EPO protein, His and GST tag (active) (GTx00422-pro) (500-7.81 ng/mL). Coated protein was probed with EPO antibody (GTx100813) (1 µg/mL). Goat anti-rabbit IgG antibody (HRP) (GTx213110-01) (1:10000) was used to detect the bound primary antibody.

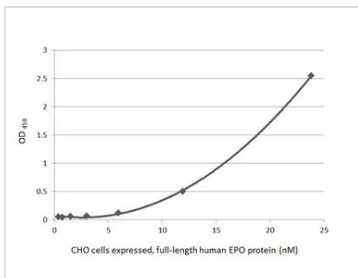

GTx100813 IHC-P Image

EPO antibody detects EPO protein at cytoplasm in rat liver by immunohistochemical analysis.

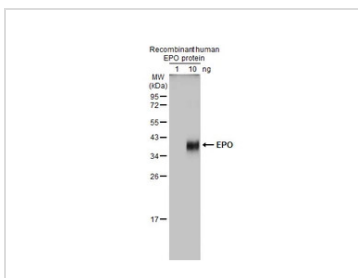
Sample: Paraffin-embedded rat liver.

EPO antibody (GTx100813) diluted at 1:400.

Antigen Retrieval: Citrate buffer, pH 6.0, 15 min


GTx100813 ELISA Image

Indirect ELISA analysis was performed by coating the plate with recombinant CHO cells expressed, full-length human EPO protein (23.81-0.37 nM). Coated protein was probed with EPO antibody (GTx100813) (1 µg/mL). Goat anti-rabbit IgG antibody (HRP) (GTx213110-01) (1:10000) was used to detect the bound primary antibody.


GTx100813 WB Image

Recombinant human EPO protein (with glycosylation) expressed in CHO cells were separated by 12% SDS-PAGE, and the membrane was blotted with EPO antibody (GTx100813) diluted at 1:10000. The HRP-conjugated anti-rabbit IgG antibody (GTx213110-01) was used to detect the primary antibody.



For full product information, images and publications, please visit our [website](https://www.genetex.com).