

Alkaline Phosphatase (Tissue Non-Specific) antibody

Cat. No. GTX100817

Host	Rabbit
Clonality	Polyclonal
Isotype	IgG
Applications	WB, IHC-P
Reactivity	Human, Mouse, Sheep

References (14)

★★★★★ Review (2)

Package

100 µl, 25 µl

Applications

Application Note

*Optimal dilutions/concentrations should be determined by the researcher.

Suggested dilution	Recommended dilution
WB	1:500-1:3000
IHC-P	1:100-1:1000

Not tested in other applications.

Calculated MW 57 kDa. ([Note](#))

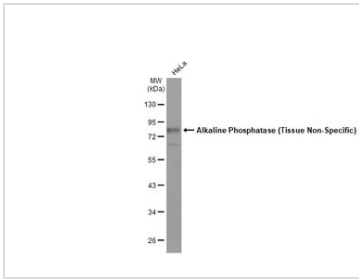
Properties

Form	Liquid
Buffer	PBS
Preservative	No preservatives
Storage	Store as concentrated solution. Centrifuge briefly prior to opening vial. For short-term storage (1-2 weeks), store at 4°C. For long-term storage, aliquot and store at -20°C or below. Avoid multiple freeze-thaw cycles.
Concentration	1 mg/ml (Please refer to the vial label for the specific concentration.)
Immunogen	Recombinant protein encompassing a sequence within the center region of human Alkaline Phosphatase (Tissue Non-Specific). The exact sequence is proprietary.
Purification	Purified by antigen-affinity chromatography.
Conjugation	Unconjugated
Note	For laboratory research use only. Not for any clinical, therapeutic, or diagnostic use in humans or animals. Not for animal or human consumption. Purchasers shall not, and agree not to enable third parties to, analyze, copy, reverse engineer or otherwise attempt to determine the structure or sequence of the product.

For full product information, images and publications, please visit our [website](#).

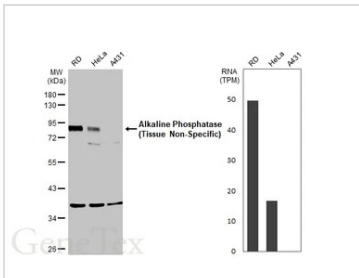
Date 2026 / 05 / 04 Page 1 of 2

DATA IMAGES



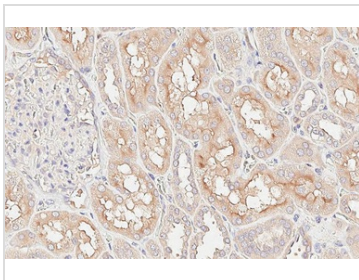
GTX100817 WB Image

Whole cell extract (30 µg) was separated by 10% SDS-PAGE, and the membrane was blotted with Alkaline Phosphatase (Tissue Non-Specific) antibody (GTX100817) diluted at 1:1000. The HRP-conjugated anti-rabbit IgG antibody (GTX213110-01) was used to detect the primary antibody.



GTX100817 WB Image

Various whole cell extracts (30 µg) were separated by 10% SDS-PAGE, and the membrane was blotted with Alkaline Phosphatase (Tissue Non-Specific) antibody (GTX100817) diluted at 1:1000. The HRP-conjugated anti-rabbit IgG antibody (GTX213110-01) was used to detect the primary antibody. Corresponding RNA expression data for the same cell lines are based on Human Protein Atlas program.



GTX100817 IHC-P Image

Alkaline Phosphatase (Tissue Non-Specific) antibody detects Alkaline Phosphatase (Tissue Non-Specific) protein by immunohistochemical analysis.

Sample: Paraffin-embedded human kidney.

Alkaline Phosphatase (Tissue Non-Specific) stained by Alkaline Phosphatase (Tissue Non-Specific) antibody (GTX100817) diluted at 1:500.

Antigen Retrieval: Tris-EDTA buffer, pH 8.0, 15 min



For full product information, images and publications, please visit our [website](#).