

Nanog antibody [N3C3]

Cat. No. GTX100863

Host	Rabbit
Clonality	Polyclonal
Isotype	IgG
Applications	WB, ICC/IF, IHC-P, IHC-Fr, IP, ELISA, Sandwich ELISA
Reactivity	Human, Mouse, Ceratotherium simum

References (44)

★★★★★ Review (1)

Package

100 µl, 25 µl

Applications

Application Note

*Optimal dilutions/concentrations should be determined by the researcher.

Suggested dilution	Recommended dilution
WB	1:500-1:3000
ICC/IF	1:100-1:1000
IHC-P	Assay dependent
IHC-Fr	Assay dependent
IP	1:100-1:500
ELISA	1:1000-1:10000
Sandwich ELISA	Assay dependent

Note : Capture: GTX100863 , Detection: GTX89079

Not tested in other applications.

Calculated MW 35 kDa. ([Note](#))

Properties

Form	Liquid
Buffer	PBS, 1% BSA, 20% Glycerol
Preservative	0.01% Thimerosal
Storage	Store as concentrated solution. Centrifuge briefly prior to opening vial. For short-term storage (1-2 weeks), store at 4°C. For long-term storage, aliquot and store at -20°C or below. Avoid multiple freeze-thaw cycles.
Concentration	0.5 mg/ml (Please refer to the vial label for the specific concentration.)
Immunogen	Recombinant protein encompassing a sequence within the center region of human NANOG. The exact sequence is proprietary.
Purification	Purified by antigen-affinity chromatography.



For full product information, images and publications, please visit our [website](#).

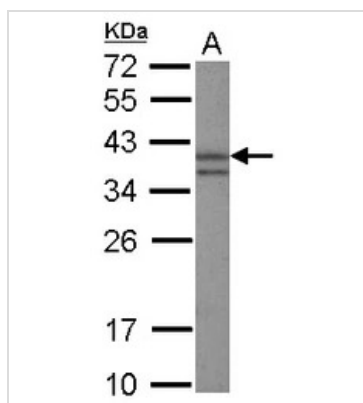
Conjugation

Unconjugated

Note

For laboratory research use only. Not for any clinical, therapeutic, or diagnostic use in humans or animals. Not for animal or human consumption.

Purchasers shall not, and agree not to enable third parties to, analyze, copy, reverse engineer or otherwise attempt to determine the structure or sequence of the product.

DATA IMAGES

GTX100863 WB Image

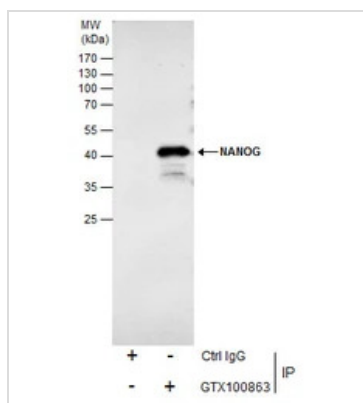
Sample (30 µg of whole cell lysate)

A: HeLa nucleus

12% SDS PAGE

GTX100863 diluted at 1:3000

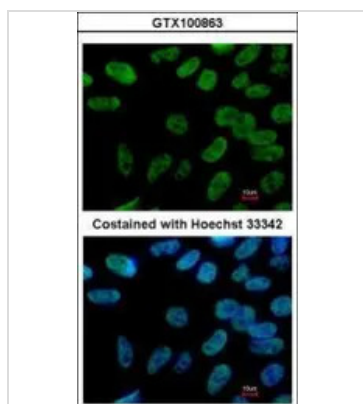
The HRP-conjugated anti-rabbit IgG antibody (GTX213110-01) was used to detect the primary antibody.


GTX100863 IP Image

Immunoprecipitation of NANOG protein from NT2D1 whole cell extracts using 5 µg of NANOG antibody [N3C3] (GTX100863).

Western blot analysis was performed using NANOG antibody [N3C3] (GTX100863) diluted at 1:500.

EasyBlot anti-Rabbit IgG (GTX221666-01) was used as a secondary reagent.


GTX100863 ICC/IF Image

Immunofluorescence analysis of paraformaldehyde-fixed Human ESC, using NANOG(GTX100863) antibody at 1:400 dilution.


 For full product information, images and publications, please visit our [website](https://www.genetex.com).