

## Synaptophysin antibody

Cat. No. GTX100865

<b>Host</b>	Rabbit
<b>Clonality</b>	Polyclonal
<b>Isotype</b>	IgG
<b>Applications</b>	WB, ICC/IF, IHC-P, IHC-Fr, IHC-Wm
<b>Reactivity</b>	Human, Mouse, Rat

References ( 23 )

★★★★★ Review ( 3 )

Package

100 µl, 25 µl

## Applications

## Application Note

\*Optimal dilutions/concentrations should be determined by the researcher.

Suggested dilution	Recommended dilution
WB	1:500-1:50000
ICC/IF	1:100-1:1000
IHC-P	1:100-1:1000
IHC-Fr	Assay dependent
IHC-Wm	Assay dependent

Not tested in other applications.

Calculated MW 34 kDa. ( [Note](#) )

## Properties

<b>Form</b>	Liquid
<b>Buffer</b>	PBS, 20% Glycerol
<b>Preservative</b>	0.025% ProClin 300
<b>Storage</b>	Store as concentrated solution. Centrifuge briefly prior to opening vial. For short-term storage (1-2 weeks), store at 4°C. For long-term storage, aliquot and store at -20°C or below. Avoid multiple freeze-thaw cycles.
<b>Concentration</b>	0.65 mg/ml (Please refer to the vial label for the specific concentration.)
<b>Immunogen</b>	Recombinant protein encompassing a sequence within the C-terminus region of human Synaptophysin. The exact sequence is proprietary.
<b>Purification</b>	Purified by antigen-affinity chromatography.
<b>Conjugation</b>	Unconjugated

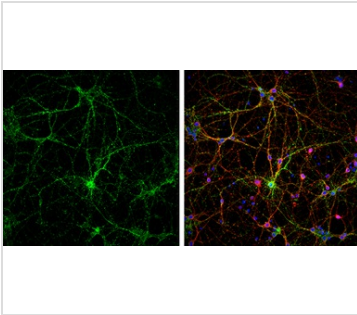


For full product information, images and publications, please visit our [website](#).

For laboratory research use only. Not for any clinical, therapeutic, or diagnostic use in humans or animals. Not for animal or human consumption.

**Note**

Purchasers shall not, and agree not to enable third parties to, analyze, copy, reverse engineer or otherwise attempt to determine the structure or sequence of the product.

**DATA IMAGES**

**GTx100865 ICC/IF Image**

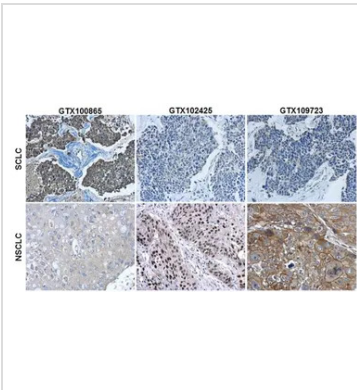
Synaptophysin antibody detects Synaptophysin protein at synaptic vesicles by immunofluorescent analysis.

Sample: DIV9 rat E18 primary cortical neurons were fixed in 4% paraformaldehyde at RT for 15 min.

Green: Synaptophysin protein stained by Synaptophysin antibody (GTx100865) diluted at 1:500.

Red: beta Tubulin 3/ Tuj1, stained by beta Tubulin 3/ Tuj1 antibody [GT11710] (GTx631836) diluted at 1:500.

Blue: Fluoroshield with DAPI (GTx30920).

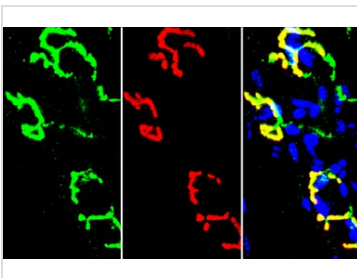

**GTx100865 IHC-P Image**

Immunohistochemical characterization of Synaptophysin (GTx100865), p63 (GTx102425) and Cytokeratin 7 (GTx109723) in human small cell lung cancer (SCLC) and non-small cell lung cancer (NSCLC) specimens.

Sample: Paraffin-embedded human SCLC (upper panel) and NSCLC (lower panel).

The section was pre-treated using heat mediated antigen retrieval with sodium citrate buffer (pH6) for 15 mins. The section was then incubated with primary antibody at 1:500 overnight at 4°C and detected using an HRP conjugated avidin-biotin-peroxidase Complex system. DAB was used as the chromogen and counterstained with haematoxylin.

Antigen Retrieval: Citrate buffer, pH 6.0, 15 min


**GTx100865 IHC-Fr Image**

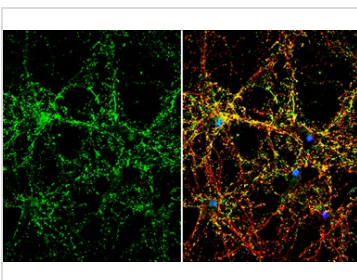
Synaptophysin antibody detects Synaptophysin protein by immunohistochemical analysis.

Sample: Frozen-sectioned mouse muscle.

Green: Synaptophysin stained by Synaptophysin antibody (GTx100865) diluted at 1:250.

Red: α-Bungarotoxin, stained by α-Bungarotoxin, Alexa Fluor™ 594 conjugate (B13423) diluted at 1:5000.

Blue: Hoechst 33342 staining.


**GTx100865 ICC/IF Image**

Synaptophysin antibody detects Synaptophysin protein by immunofluorescent analysis.

Sample: DIV10 rat E18 primary hippocampal neuron cells were fixed in 4% paraformaldehyde at RT for 15 min.

Green: Synaptophysin stained by Synaptophysin antibody (GTx100865) diluted at 1:500.

Red: Tau, stained by Tau antibody [GT287] (GTx634809) diluted at 1:500.

Blue: Fluoroshield with DAPI (GTx30920).



For full product information, images and publications, please visit our [website](https://www.genetex.com).