

## Tau antibody

**Cat. No. GTX100866**

|                     |                   |
|---------------------|-------------------|
| <b>Host</b>         | Rabbit            |
| <b>Clonality</b>    | Polyclonal        |
| <b>Isotype</b>      | IgG               |
| <b>Applications</b> | WB, ICC/IF, IHC-P |
| <b>Reactivity</b>   | Human, Mouse, Rat |

**Package**  
100 µl, 25 µl

## Applications

**Application Note**

\*Optimal dilutions/concentrations should be determined by the researcher.

| Suggested dilution | Recommended dilution |
|--------------------|----------------------|
| WB                 | 1:500-1:3000         |
| ICC/IF             | Assay dependent      |
| IHC-P              | 1:100-1:1000         |

Not tested in other applications.

**Calculated MW** 79 kDa. ([Note](#))

## Properties

|                      |  |
|----------------------|--|
| <b>Form</b>          | Liquid   |
| <b>Buffer</b>        | PBS  |
| <b>Preservative</b>  | No preservatives   |
| <b>Storage</b>       | Store as concentrated solution. Centrifuge briefly prior to opening vial. For short-term storage (1-2 weeks), store at 4°C. For long-term storage, aliquot and store at -20°C or below. Avoid multiple freeze-thaw cycles. |
| <b>Concentration</b> | 1 mg/ml (Please refer to the vial label for the specific concentration.)   |
| <b>Immunogen</b>     | Recombinant protein encompassing a sequence within the center region of human Tau. The exact sequence is proprietary.  |
| <b>Purification</b>  | Purified by antigen-affinity chromatography.   |
| <b>Conjugation</b>   | Unconjugated   |

**Note**

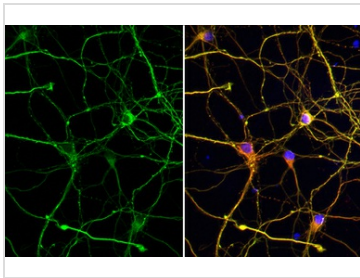
For laboratory research use only. Not for any clinical, therapeutic, or diagnostic use in humans or animals. Not for animal or human consumption.

Purchasers shall not, and agree not to enable third parties to, analyze, copy, reverse engineer or otherwise attempt to determine the structure or sequence of the product.



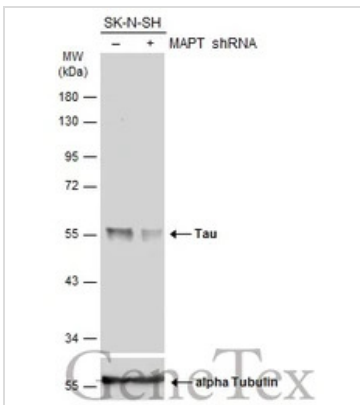
For full product information, images and publications, please visit our [website](#).

DATA IMAGES



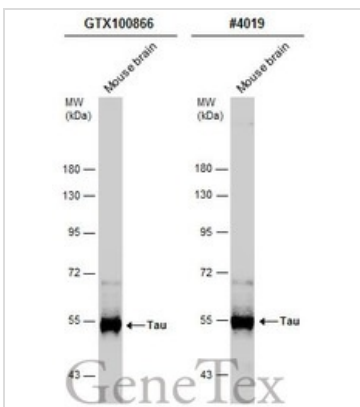
**GTX100866 ICC/IF Image**

Tau antibody detects Tau protein at cytoskeleton by immunofluorescent analysis.  
 Sample: DIV9 rat E18 primary cortical neuron cells were fixed in 4% paraformaldehyde at RT for 15 min.  
 Green: Tau stained by Tau antibody (GTX100866) diluted at 1:250.  
 Red: Tau, an axon marker, stained by Tau antibody [GT287] (GTX634809) diluted at 1:500.  
 Blue: Fluoroshield with DAPI (GTX30920).



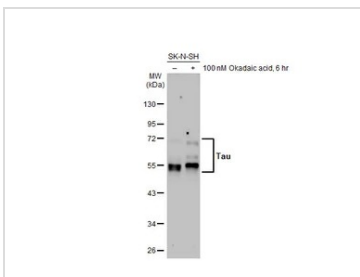
**GTX100866 WB Image**

Non-transfected (-) and transfected (+) SK-N-SH whole cell extracts (30 µg) were separated by 10% SDS-PAGE, and the membrane was blotted with Tau antibody (GTX100866) diluted at 1:500. The HRP-conjugated anti-rabbit IgG antibody (GTX213110-01) was used to detect the primary antibody.



**GTX100866 WB Image**

Mouse tissue extract (50 µg) was separated by 7.5% SDS-PAGE, and the membranes were blotted with Tau antibody (GTX100866) diluted at 1:2000 and competitor's antibody (CST#4019) diluted at 1:1000. The HRP-conjugated anti-rabbit IgG antibody (GTX213110-01) was used to detect the primary antibody.  
 \*The competitor is not affiliated with GeneTex and does not endorse this product.



**GTX100866 WB Image**

Untreated (-) and treated (+) SK-N-SH whole cell extract (30 µg) were separated by 10% SDS-PAGE, and the membrane was blotted with Tau antibody (GTX100866) diluted at 1:2000. The HRP-conjugated anti-rabbit IgG antibody (GTX213110-01) was used to detect the primary antibody, and the signal was developed with Trident ECL plus-Enhanced.



For full product information, images and publications, please visit our [website](http://www.genetex.com).