

Cyclin B1 antibody

Cat. No. GTX100911

Host	Rabbit
Clonality	Polyclonal
Isotype	IgG
Applications	WB, ICC/IF, IHC-P
Reactivity	Human, Mouse, African green monkey

References (43)

★★★★★ Review (6)

Package

100 µl, 25 µl

Applications

Application Note

*Optimal dilutions/concentrations should be determined by the researcher.

Suggested dilution	Recommended dilution
WB	1:500-1:5000
ICC/IF	1:100-1:1000
IHC-P	1:100-1:1000

Not tested in other applications.

Calculated MW 48 kDa. ([Note](#))

Properties

Form	Liquid
Buffer	PBS, 20% Glycerol
Preservative	0.025% ProClin 300
Storage	Store as concentrated solution. Centrifuge briefly prior to opening vial. For short-term storage (1-2 weeks), store at 4°C. For long-term storage, aliquot and store at -20°C or below. Avoid multiple freeze-thaw cycles.
Concentration	1.42 mg/ml (Please refer to the vial label for the specific concentration.)
Immunogen	Recombinant protein encompassing a sequence within the center region of human Cyclin B1. The exact sequence is proprietary.
Purification	Purified by antigen-affinity chromatography.
Conjugation	Unconjugated

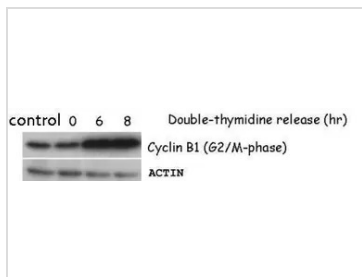
Note

For laboratory research use only. Not for any clinical, therapeutic, or diagnostic use in humans or animals. Not for animal or human consumption.

Purchasers shall not, and agree not to enable third parties to, analyze, copy, reverse engineer or otherwise attempt to determine the structure or sequence of the product.

For full product information, images and publications, please visit our [website](#).

DATA IMAGES

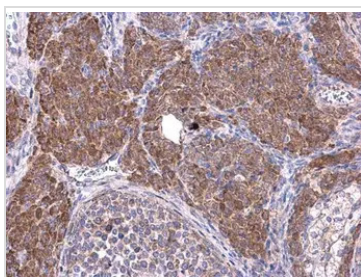


GTX100911 WB Image

Sample (50 µg of HeLa whole cell lysate)

GTX100911 diluted at 1:5000

The HRP-conjugated anti-rabbit IgG antibody (GTX213110-01) was used to detect the primary antibody.



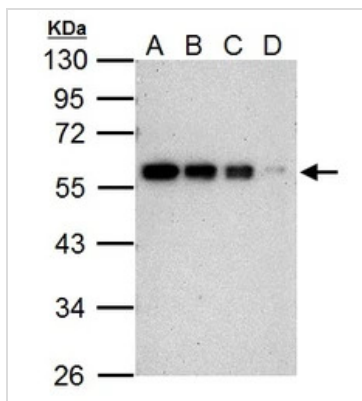
GTX100911 IHC-P Image

Cyclin B1 antibody detects Cyclin B1 protein at cytoplasm on mouse ovary by immunohistochemical analysis.

Sample: Paraffin-embedded mouse ovary.

Cyclin B1 antibody (GTX100911) diluted at 1:500.

Antigen Retrieval: Trilogy™ (EDTA based, pH 8.0) buffer, 15min



GTX100911 WB Image

Cyclin B1 antibody detects Cyclin B1 protein by Western blot analysis.

A. 20 µg 293T whole cell lysate/extract

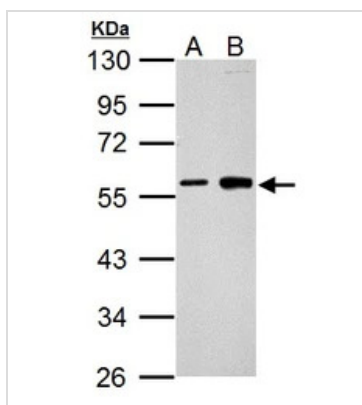
B. 10 µg 293T whole cell lysate/extract

C. 5 µg 293T whole cell lysate/extract |

D. 1 µg 293T whole cell lysate/extract

10 % SDS-PAGE

Cyclin B1 antibody (GTX100911) dilution: 1:3000



GTX100911 WB Image

Sample (30 ug of whole cell lysate)

A: U2OS

B: U2OS treated with 100ng/ml Nocodazole for 16hr

10% SDS PAGE

GTX100911 diluted at 1:1000



For full product information, images and publications, please visit our [website](https://www.genetex.com).