

B-Raf antibody [N2C1], Internal

Cat. No. GTX100913

Host	Rabbit
Clonality	Polyclonal
Isotype	IgG
Application	WB, IHC-P, IP
Reactivity	Human, Mouse, Rat

Reference (5)

Package

100 µl, 25 µl

APPLICATION

Application Note

*Optimal dilutions/concentrations should be determined by the researcher.

Suggested dilution	Recommended dilution
WB	1:500-1:10000
IHC-P	1:100-1:1000
IP	1:100-1:500

Not tested in other applications.

Calculated MW 84 kDa. ([Note](#))

PROPERTIES

Form	Liquid
Buffer	PBS, 1% BSA, 20% Glycerol
Preservative	0.025% ProClin 300
Storage	Store as concentrated solution. Centrifuge briefly prior to opening vial. For short-term storage (1-2 weeks), store at 4°C. For long-term storage, aliquot and store at -20°C or below. Avoid multiple freeze-thaw cycles.
Concentration	0.21 mg/ml (Please refer to the vial label for the specific concentration.)
Immunogen	Recombinant protein encompassing a sequence within the center region of human B-Raf. The exact sequence is proprietary.
Purification	Purified by antigen-affinity chromatography.
Conjugation	Unconjugated

Note

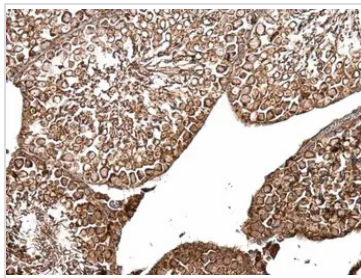
For laboratory research use only. Not for any clinical, therapeutic, or diagnostic use in humans or animals. Not for animal or human consumption.

Purchasers shall not, and agree not to enable third parties to, analyze, copy, reverse engineer or otherwise attempt to determine the structure or sequence of the product.



For full product information, images and publications, please visit our [website](#).

DATA IMAGES



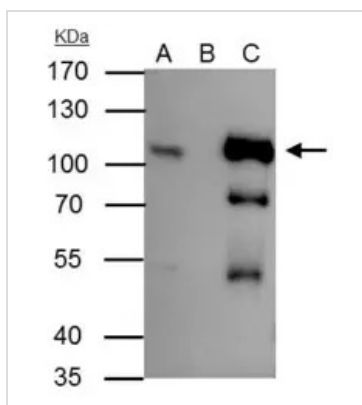
GTX100913 IHC-P Image

B-Raf antibody [N2C1], Internal detects B-Raf protein at cytosol on mouse testis by immunohistochemical analysis.

Sample: Paraffin-embedded mouse testis.

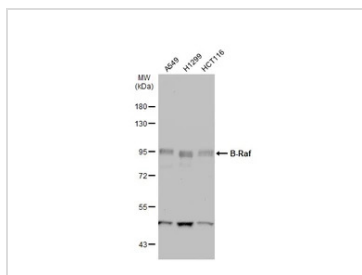
B-Raf antibody [N2C1], Internal (GTX100913) dilution: 1:500.

Antigen Retrieval: Trilogy™ (EDTA based, pH 8.0) buffer, 15min



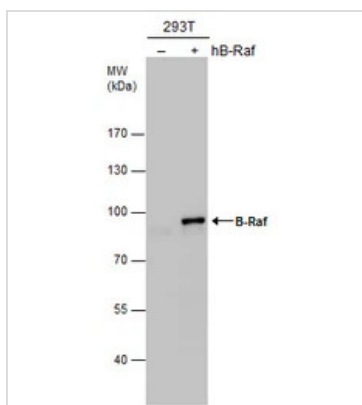
GTX100913 IP Image

B-Raf antibody [N2C1], Internal immunoprecipitates B-Raf protein in IP experiments. IP Sample: HepG2 whole cell lysate/extract A : 30 µg whole cell lysate/extract of B-Raf protein expressing HepG2 cells B : Control with 3 µg of pre-immune rabbit IgG C : Immunoprecipitation of B-Raf by 3 µg of B-Raf antibody [N2C1], Internal (GTX100913) 10% SDS-PAGE The immunoprecipitated B-Raf protein was detected by B-Raf antibody [N2C1], Internal (GTX100913) diluted at 1:500. EasyBlot anti-rabbit IgG (HRP) (GTX221666-01) was used as a secondary reagent.



GTX100913 WB Image

Various whole cell extracts (30 µg) were separated by 7.5% SDS-PAGE, and the membrane was blotted with B-Raf antibody [N2C1], Internal (GTX100913) diluted at 1:1000. The HRP-conjugated anti-rabbit IgG antibody (GTX213110-01) was used to detect the primary antibody.



GTX100913 WB Image

B-Raf antibody [N2C1], Internal detects B-Raf protein by western blot analysis. Non-transfected (-) and B-Raf-transfected (+) 293T whole cell extracts (30 µg) were separated by 7.5% SDS-PAGE, and the membrane was blotted with B-Raf antibody [N2C1], Internal (GTX100913) diluted at 1:5000.



For full product information, images and publications, please visit our [website](https://www.genetex.com).