

## Angiotensin 4 antibody

**Cat. No. GTX100993**

<b>Host</b>	Rabbit
<b>Clonality</b>	Polyclonal
<b>Isotype</b>	IgG
<b>Applications</b>	WB, IHC-P
<b>Reactivity</b>	Human, Mouse

**Package**  
100 µl, 25 µl

## Applications

**Application Note**

\*Optimal dilutions/concentrations should be determined by the researcher.

Suggested dilution	Recommended dilution
WB	1:500-1:3000
IHC-P	1:100-1:1000

Not tested in other applications.

**Calculated MW** 57 kDa. ([Note](#))

## Properties

<b>Form</b>	Liquid
<b>Buffer</b>	0.1M Tris, 0.1M Glycine, 10% Glycerol
<b>Preservative</b>	0.01% Thimerosal
<b>Storage</b>	Store as concentrated solution. Centrifuge briefly prior to opening vial. For short-term storage (1-2 weeks), store at 4°C. For long-term storage, aliquot and store at -20°C or below. Avoid multiple freeze-thaw cycles.
<b>Concentration</b>	1 mg/ml (Please refer to the vial label for the specific concentration.)
<b>Immunogen</b>	Recombinant protein encompassing a sequence within the N-terminus region of human Angiotensin 4. The exact sequence is proprietary.
<b>Purification</b>	Purified by antigen-affinity chromatography.
<b>Conjugation</b>	Unconjugated

**Note**

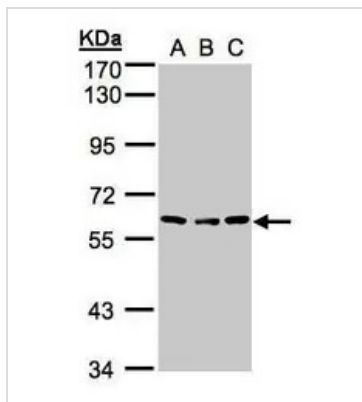
For laboratory research use only. Not for any clinical, therapeutic, or diagnostic use in humans or animals. Not for animal or human consumption.

Purchasers shall not, and agree not to enable third parties to, analyze, copy, reverse engineer or otherwise attempt to determine the structure or sequence of the product.



For full product information, images and publications, please visit our [website](#).

## DATA IMAGES

**GTx100993 WB Image**

Sample (30µg whole cell lysate)

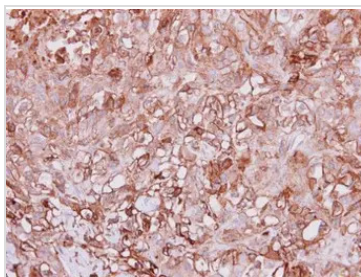
A:H1299

B:Hep G2 (GTx27900)

C:MOLT4 (GTx27912)

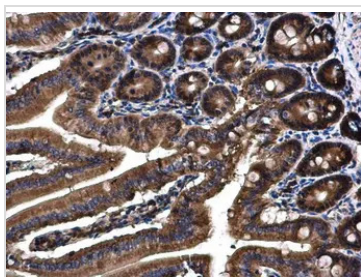
7.5% SDS PAGE

GTx100993 diluted at 1:500

**GTx100993 IHC-P Image**

Immunohistochemical analysis of paraffin-embedded DU145 xenograft, using Angiopoietin 4(GTx100993) antibody at 1:100 dilution.

Antigen Retrieval: Citrate buffer, pH 6.0, 15 min

**GTx100993 IHC-P Image**

Angiopoietin 4 antibody detects Angiopoietin 4 protein at cytoplasm on mouse duodenum by immunohistochemical analysis.

Sample: Paraffin-embedded mouse duodenum.

Angiopoietin 4 antibody (GTx100993) diluted at 1:500.

Antigen Retrieval: Citrate buffer, pH 6.0, 15 min



For full product information, images and publications, please visit our [website](#).