

## PTEN antibody

Cat. No. GTX101025

|              |                                  |
|--------------|----------------------------------|
| Host         | Rabbit                           |
| Clonality    | Polyclonal                       |
| Isotype      | IgG                              |
| Applications | WB, ICC/IF, IHC-P                |
| Reactivity   | Human, Mouse, Rat, Cat, Dog, Pig |

References ( 18 )

★★★★☆ Review ( 2 )

Package

100 µl, 25 µl

## PRODUCT

## Summary

PTEN antibody detects phosphatase and tensin homolog (PTEN), a known tumor suppressor protein with a predicted molecular weight of ~47 kDa. PTEN is a key phosphatase involved in the AKT pathway, playing important roles in cell growth, survival, and migration. Loss of PTEN function is found in various diseases, including cancers.

## Applications

## Application Note

\*Optimal dilutions/concentrations should be determined by the researcher.

| Suggested dilution | Recommended dilution |
|--------------------|----------------------|
| WB                 | 1:500-1:3000         |
| ICC/IF             | 1:100-1:1000         |
| IHC-P              | 1:100-1:1000         |

Not tested in other applications.

**Calculated MW** 47 kDa. ( [Note](#) )

## Properties

|               |                                                                                                                                                                                                                            |
|---------------|----------------------------------------------------------------------------------------------------------------------------------------------------------------------------------------------------------------------------|
| Form          | Liquid                                                                                                                                                                                                                     |
| Buffer        | PBS, 20% Glycerol                                                                                                                                                                                                          |
| Preservative  | 0.025% ProClin 300                                                                                                                                                                                                         |
| Storage       | Store as concentrated solution. Centrifuge briefly prior to opening vial. For short-term storage (1-2 weeks), store at 4°C. For long-term storage, aliquot and store at -20°C or below. Avoid multiple freeze-thaw cycles. |
| Concentration | 1.68 mg/ml (Please refer to the vial label for the specific concentration.)                                                                                                                                                |
| Immunogen     | Recombinant protein encompassing a sequence within the center region of human PTEN. The exact sequence is proprietary.                                                                                                     |
| Purification  | Purified by antigen-affinity chromatography.                                                                                                                                                                               |
| Conjugation   | Unconjugated                                                                                                                                                                                                               |



For full product information, images and publications, please visit our [website](#).

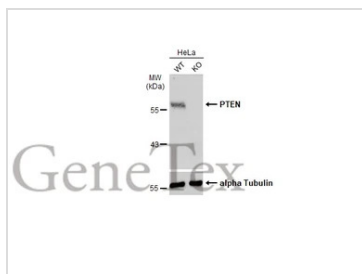
Date 2025 / 08 / 17 Page 1 of 2

For laboratory research use only. Not for any clinical, therapeutic, or diagnostic use in humans or animals. Not for animal or human consumption.

## Note

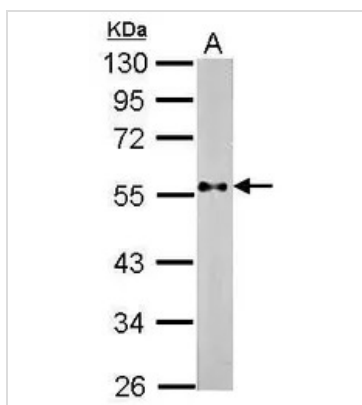
Purchasers shall not, and agree not to enable third parties to, analyze, copy, reverse engineer or otherwise attempt to determine the structure or sequence of the product.

## DATA IMAGES



### GTx101025 WB Image

Wild-type (WT) and PTEN knockout (KO) HeLa cell extracts (30 µg) were separated by 7.5% SDS-PAGE, and the membrane was blotted with PTEN antibody (GTx101025) diluted at 1:500. The HRP-conjugated anti-rabbit IgG antibody (GTx213110-01) was used to detect the primary antibody.



### GTx101025 WB Image

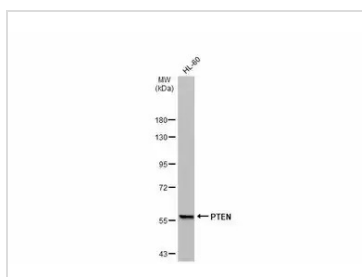
Sample (30 µg of whole cell lysate)

A: NIH-3T3

10% SDS PAGE

GTx101025 diluted at 1:500

The HRP-conjugated anti-rabbit IgG antibody (GTx213110-01) was used to detect the primary antibody.



### GTx101025 WB Image

Whole cell extract (30 µg) was separated by 7.5% SDS-PAGE, and the membrane was blotted with PTEN antibody (GTx101025) diluted at 1:500. The HRP-conjugated anti-rabbit IgG antibody (GTx213110-01) was used to detect the primary antibody.



For full product information, images and publications, please visit our [website](https://www.genetex.com).