

Prion Protein (PrP) antibody

Cat. No. GTX101063

| | |
|-------------|--------------|
| Host | Rabbit |
| Clonality | Polyclonal |
| Isotype | IgG |
| Application | WB, IHC-P |
| Reactivity | Human, Mouse |

Package
100 µl, 25 µl

APPLICATION

Application Note

*Optimal dilutions/concentrations should be determined by the researcher.

| Suggested dilution | Recommended dilution |
|--------------------|----------------------|
| WB | 1:500-1:3000 |
| IHC-P | 1:100-1:1000 |

Not tested in other applications.

Calculated MW 28 kDa. ([Note](#))

PROPERTIES

| | |
|---------------|--|
| Form | Liquid |
| Buffer | PBS, 1% BSA, 20% Glycerol |
| Preservative | 0.01% Thimerosal |
| Storage | Store as concentrated solution. Centrifuge briefly prior to opening vial. For short-term storage (1-2 weeks), store at 4°C. For long-term storage, aliquot and store at -20°C or below. Avoid multiple freeze-thaw cycles. |
| Concentration | 0.36 mg/ml (Please refer to the vial label for the specific concentration.) |
| Immunogen | Recombinant protein encompassing a sequence within the center region of human Prion Protein (PrP). The exact sequence is proprietary. |
| Purification | Purified by antigen-affinity chromatography. |
| Conjugation | Unconjugated |

Note

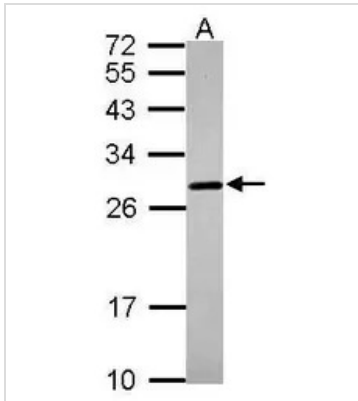
For laboratory research use only. Not for any clinical, therapeutic, or diagnostic use in humans or animals. Not for animal or human consumption.

Purchasers shall not, and agree not to enable third parties to, analyze, copy, reverse engineer or otherwise attempt to determine the structure or sequence of the product.



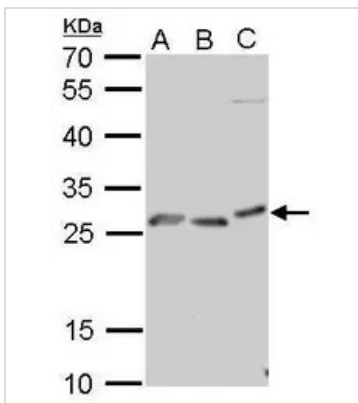
For full product information, images and publications, please visit our [website](#).

DATA IMAGES



GTX101063 WB Image

Sample (30 ug of whole cell lysate)
A:IMR32
12% SDS PAGE
GTX101063 diluted at 1:1000



GTX101063 WB Image

PRP antibody detects PRNP protein by Western blot analysis.
A. 30 μ g Neuro2A whole cell lysate/extract
B. 30 μ g NIH-3T3 whole cell lysate/extract
C. 30 μ g C2C12 whole cell lysate/extract
12 % SDS-PAGE
PRP antibody (GTX101063) dilution: 1:1000



GTX101063 IHC-P Image

PRP antibody detects PRP protein at nucleus on mouse middle brain by immunohistochemical analysis.
Sample: Paraffin-embedded mouse middle brain.
PRP antibody (GTX101063) dilution: 1:500.

Antigen Retrieval: Trilogy™ (EDTA based, pH 8.0) buffer, 15min



For full product information, images and publications, please visit our [website](https://www.genetex.com).