

# Annexin A1 antibody

**Cat. No. GTX101070**

<b>Host</b>	Rabbit
<b>Clonality</b>	Polyclonal
<b>Isotype</b>	IgG
<b>Application</b>	WB, ICC/IF, IHC-P, IP
<b>Reactivity</b>	Human, Mouse, Rat

Reference ( 6 )  
Package  
100 µl, 25 µl

## APPLICATION

### Application Note

\*Optimal dilutions/concentrations should be determined by the researcher.

Suggested dilution	Recommended dilution
WB	1:500-1:3000
ICC/IF	1:100-1:1000
IHC-P	1:100-1:1000
IP	1:100-1:500

Not tested in other applications.

**Calculated MW** 39 kDa. ( [Note](#) )

## PROPERTIES

<b>Form</b>	Liquid
<b>Buffer</b>	PBS, 20% Glycerol
<b>Preservative</b>	0.025% ProClin 300
<b>Storage</b>	Store as concentrated solution. Centrifuge briefly prior to opening vial. For short-term storage (1-2 weeks), store at 4°C. For long-term storage, aliquot and store at -20°C or below. Avoid multiple freeze-thaw cycles.
<b>Concentration</b>	0.95 mg/ml (Please refer to the vial label for the specific concentration.)
<b>Immunogen</b>	Recombinant protein encompassing a sequence within the center region of human Annexin A1. The exact sequence is proprietary.
<b>Purification</b>	Purified by antigen-affinity chromatography.
<b>Conjugation</b>	Unconjugated

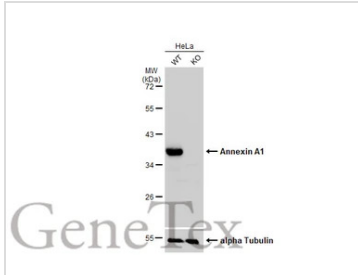


For full product information, images and publications, please visit our [website](#).

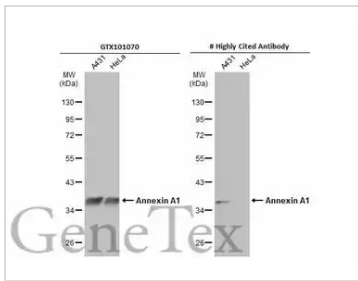
For laboratory research use only. Not for any clinical, therapeutic, or diagnostic use in humans or animals. Not for animal or human consumption.

**Note**

Purchasers shall not, and agree not to enable third parties to, analyze, copy, reverse engineer or otherwise attempt to determine the structure or sequence of the product.

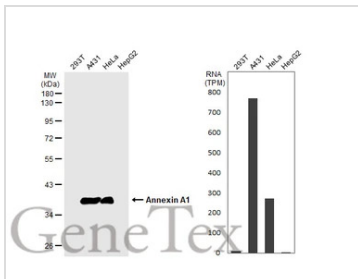
**DATA IMAGES**

**GTX101070 WB Image**

Wild-type (WT) and Annexin A1 knockout (KO) HeLa cell extracts (30 µg) were separated by 10% SDS-PAGE, and the membrane was blotted with Annexin A1 antibody (GTX101070) diluted at 1:1000. The HRP-conjugated anti-rabbit IgG antibody (GTX213110-01) was used to detect the primary antibody.

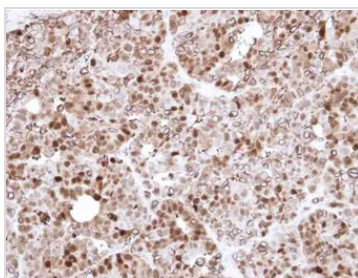

**GTX101070 WB Image**

Various whole cell extracts (30 µg) were separated by 10% SDS-PAGE, and the membranes were blotted with Annexin A1 antibody (GTX101070) diluted at 1:5000 and competitor's antibody diluted at 1:5000. The HRP-conjugated anti-rabbit IgG antibody (GTX213110-01) was used to detect the primary antibody.

\*The competitor is not affiliated with GeneTex and does not endorse this product.


**GTX101070 WB Image**

Various whole cell extracts (30 µg) were separated by 10% SDS-PAGE, and the membrane was blotted with Annexin A1 antibody (GTX101070) diluted at 1:10000. The HRP-conjugated anti-rabbit IgG antibody (GTX213110-01) was used to detect the primary antibody. Corresponding RNA expression data for the same cell lines are based on Human Protein Atlas program.


**GTX101070 IHC-P Image**

Immunohistochemical analysis of paraffin-embedded N87 Xenograft , using Annexin I(GTX101070) antibody at 1:500 dilution.

Antigen Retrieval: Trilogy™ (EDTA based, pH 8.0) buffer, 15min



For full product information, images and publications, please visit our [website](https://www.genetex.com).