

## WRN antibody [C3], C-term

**Cat. No. GTX101082**

|                     |            |
|---------------------|------------|
| <b>Host</b>         | Rabbit     |
| <b>Clonality</b>    | Polyclonal |
| <b>Isotype</b>      | IgG        |
| <b>Applications</b> | WB, ICC/IF |
| <b>Reactivity</b>   | Human      |

**Package**  
100 µl, 25 µl

## Applications

**Application Note**

\*Optimal dilutions/concentrations should be determined by the researcher.

| Suggested dilution | Recommended dilution |
|--------------------|----------------------|
| WB                 | 1:500-1:3000         |
| ICC/IF             | 1:100-1:1000         |

Not tested in other applications.

**Calculated MW** 162 kDa. ([Note](#))

## Properties

|                      |                                                                                                                                                                                                                            |
|----------------------|----------------------------------------------------------------------------------------------------------------------------------------------------------------------------------------------------------------------------|
| <b>Form</b>          | Liquid                                                                                                                                                                                                                     |
| <b>Buffer</b>        | PBS, 40% Glycerol                                                                                                                                                                                                          |
| <b>Preservative</b>  | 0.01% Thimerosal                                                                                                                                                                                                           |
| <b>Storage</b>       | Store as concentrated solution. Centrifuge briefly prior to opening vial. For short-term storage (1-2 weeks), store at 4°C. For long-term storage, aliquot and store at -20°C or below. Avoid multiple freeze-thaw cycles. |
| <b>Concentration</b> | 1 mg/ml (Please refer to the vial label for the specific concentration.)                                                                                                                                                   |
| <b>Immunogen</b>     | Recombinant protein encompassing a sequence within the C-terminus region of human WRN. The exact sequence is proprietary.                                                                                                  |
| <b>Purification</b>  | Purified by antigen-affinity chromatography.                                                                                                                                                                               |
| <b>Conjugation</b>   | Unconjugated                                                                                                                                                                                                               |

**Note**

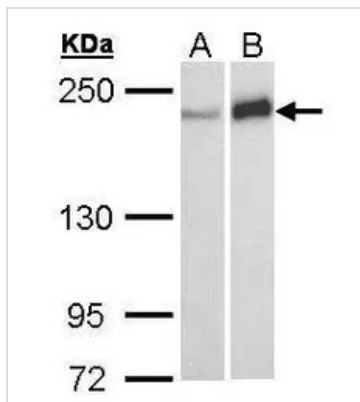
For laboratory research use only. Not for any clinical, therapeutic, or diagnostic use in humans or animals. Not for animal or human consumption.

Purchasers shall not, and agree not to enable third parties to, analyze, copy, reverse engineer or otherwise attempt to determine the structure or sequence of the product.



For full product information, images and publications, please visit our [website](#).

## DATA IMAGES



### GTX101082 WB Image

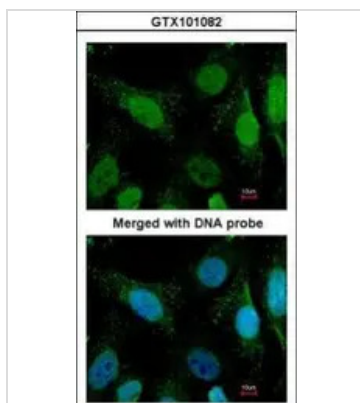
Sample (30 ug of whole cell lysate)

A: A431 (GTX27909)

B: Molt-4 (GTX27912)

5% SDS PAGE

GTX101082 diluted at 1:1000



### GTX101082 ICC/IF Image

Immunofluorescence analysis of paraformaldehyde-fixed HeLa, using Werner syndrome(GTX101082) antibody at 1:100 dilution.



For full product information, images and publications, please visit our [website](https://www.genetex.com).