

Wnt4 antibody

Cat. No. GTX101085

Host	Rabbit
Clonality	Polyclonal
Isotype	IgG
Application	WB, IHC-P
Reactivity	Human, Mouse, Rat

Reference (3)

Package

100 µl, 25 µl

APPLICATION

Application Note

*Optimal dilutions/concentrations should be determined by the researcher.

Suggested dilution	Recommended dilution
WB	1:500-1:10000
IHC-P	1:100-1:1000

Not tested in other applications.

Calculated MW 39 kDa. ([Note](#))

Product Note This antibody is specific for human Wnt4 protein, and it does not cross react with human Wnt2, Wnt2b, Wnt3, Wnt5a, Wnt7a, Wnt7b, Wnt8b, Wnt9a, Wnt9b, and Wnt10b protein.

PROPERTIES

Form	Liquid
Buffer	0.1M Tris, 0.1M Glycine, 10% Glycerol
Preservative	0.01% Thimerosal
Storage	Store as concentrated solution. Centrifuge briefly prior to opening vial. For short-term storage (1-2 weeks), store at 4°C. For long-term storage, aliquot and store at -20°C or below. Avoid multiple freeze-thaw cycles.
Concentration	0.78 mg/ml (Please refer to the vial label for the specific concentration.)
Immunogen	Recombinant protein encompassing a sequence within the center region of human WNT4. The exact sequence is proprietary.
Purification	Purified by antigen-affinity chromatography.
Conjugation	Unconjugated

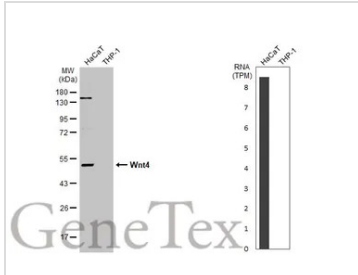


For full product information, images and publications, please visit our [website](#).

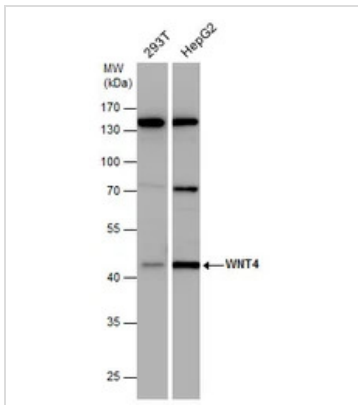
For laboratory research use only. Not for any clinical, therapeutic, or diagnostic use in humans or animals. Not for animal or human consumption.

Note

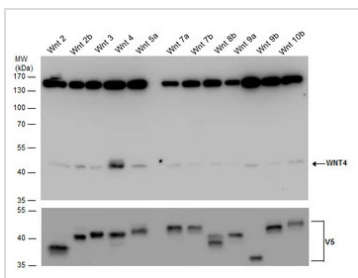
Purchasers shall not, and agree not to enable third parties to, analyze, copy, reverse engineer or otherwise attempt to determine the structure or sequence of the product.

DATA IMAGES

GTx101085 WB Image

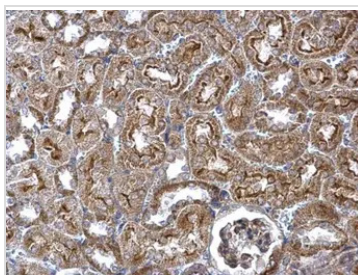
Various whole cell extracts (30 µg) were separated by 10% SDS-PAGE, and the membrane was blotted with Wnt4 antibody (GTx101085) diluted at 1:1000. The HRP-conjugated anti-rabbit IgG antibody (GTx213110-01) was used to detect the primary antibody. Corresponding RNA expression data for the same cell lines are based on Human Protein Atlas program.


GTx101085 WB Image

WNT4 antibody detects WNT4 protein by western blot analysis. Various whole cell extracts (30 µg) were separated by 10% SDS-PAGE, and the membrane was blotted with WNT4 antibody (GTx101085) diluted at a dilution of 1:1000. The HRP-conjugated anti-rabbit IgG antibody (GTx213110-01) was used to detect the primary antibody.


GTx101085 WB Image

WNT4 antibody detects WNT4 protein by western blot analysis. Non-transfected (-) and Wnt4-transfected (+, including V5-tag) 293T whole cell extracts (100 µg) were separated by 10% SDS-PAGE, and the membrane was blotted with WNT4 antibody (GTx101085) at a dilution of 1:2500. The V5 was used as internal control (GTx117997, 1:2500) shown at the bottom panel. The HRP-conjugated anti-rabbit IgG antibody (GTx213110-01) was used to detect the primary antibody.


GTx101085 IHC-P Image

WNT4 antibody detects WNT4 protein at secreted on mouse kidney by immunohistochemical analysis. Sample: Paraffin-embedded mouse kidney. WNT4 antibody (GTx101085) dilution: 1:500.

Antigen Retrieval: Trilogy™ (EDTA based, pH 8.0) buffer, 15min



For full product information, images and publications, please visit our [website](https://www.genetex.com).