

## VCP antibody

Cat. No. GTX101089

<b>Host</b>	Rabbit
<b>Clonality</b>	Polyclonal
<b>Isotype</b>	IgG
<b>Applications</b>	WB, IHC-P, IHC-Fr, IHC-Wm, IP
<b>Reactivity</b>	Human, Mouse, Rat, Zebrafish

References ( 14 )

★★★★★ Review ( 3 )

Package

100 µl, 25 µl

## Applications

## Application Note

\*Optimal dilutions/concentrations should be determined by the researcher.

Suggested dilution	Recommended dilution
WB	1:500-1:10000
IHC-P	1:100-1:1000
IHC-Fr	1:100-1:1000
IHC-Wm	Assay dependent
IP	1:100-1:500

Not tested in other applications.

**Calculated MW** 89 kDa. ( [Note](#) )**Product Note** KO/KD validation is based on customer review data.

## Properties

<b>Form</b>	Liquid
<b>Buffer</b>	PBS, 1% BSA, 20% Glycerol
<b>Preservative</b>	0.025% ProClin 300
<b>Storage</b>	Store as concentrated solution. Centrifuge briefly prior to opening vial. For short-term storage (1-2 weeks), store at 4°C. For long-term storage, aliquot and store at -20°C or below. Avoid multiple freeze-thaw cycles.
<b>Concentration</b>	0.33 mg/ml (Please refer to the vial label for the specific concentration.)
<b>Immunogen</b>	Recombinant protein encompassing a sequence within the C-terminus region of human VCP. The exact sequence is proprietary.
<b>Purification</b>	Purified by antigen-affinity chromatography.
<b>Conjugation</b>	Unconjugated



For full product information, images and publications, please visit our [website](#).

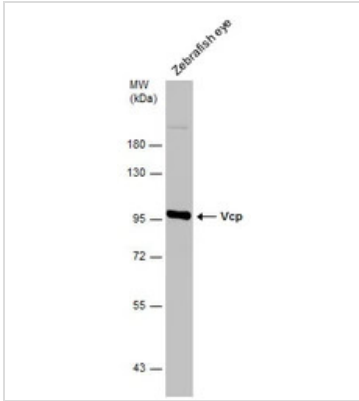
Date 2025 / 12 / 15 Page 1 of 2

For laboratory research use only. Not for any clinical, therapeutic, or diagnostic use in humans or animals. Not for animal or human consumption.

## Note

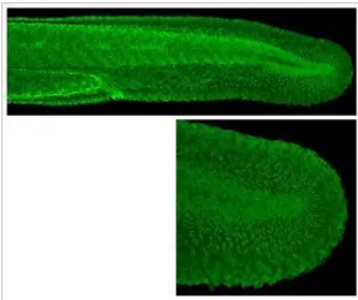
Purchasers shall not, and agree not to enable third parties to, analyze, copy, reverse engineer or otherwise attempt to determine the structure or sequence of the product.

## DATA IMAGES



### GTX101089 WB Image

Zebrafish tissue extract (30 µg) was separated by 7.5% SDS-PAGE, and the membrane was blotted with VCP antibody (GTX101089) diluted at 1:1000.

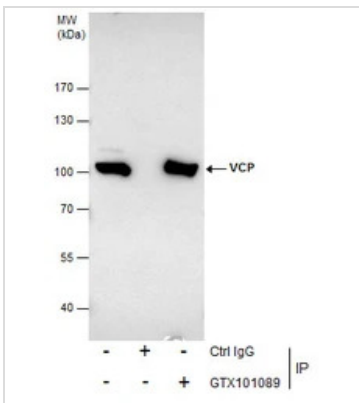


### GTX101089 IHC-Wm Image

VCP antibody detects Vcp protein on whole-mount zebrafish embryos by immunohistochemical analysis.

Sample: Paraformaldehyde-fixed zebrafish embryos.

VCP antibody (GTX101089) dilution: 1:200.



### GTX101089 IP Image

Immunoprecipitation of VCP protein from HeLa whole cell extracts using 5 µg of VCP antibody (GTX101089).

Western blot analysis was performed using VCP antibody (GTX101089) diluted at 1:500.

EasyBlot anti-Rabbit IgG (GTX221666-01) was used as a secondary reagent.



For full product information, images and publications, please visit our [website](https://www.genetex.com).