

PPAR alpha antibody

Cat. No. GTX101098

Host	Rabbit
Clonality	Polyclonal
Isotype	IgG
Applications	WB, IHC-P, IP, ChIP assay
Reactivity	Human, Mouse, Rat, Honeybee, Queen Bee, Plant

References (30)

★★★★★ Review (2)

Package

100 µl, 25 µl

Applications

Application Note

*Optimal dilutions/concentrations should be determined by the researcher.

Suggested dilution	Recommended dilution
WB	1:500-1:3000
IHC-P	Assay dependent
IP	1:100-1:500
ChIP assay	Assay dependent

Not tested in other applications.

Calculated MW 52 kDa. ([Note](#))

Properties

Form	Liquid
Buffer	PBS, 20% Glycerol
Preservative	0.025% ProClin 300
Storage	Store as concentrated solution. Centrifuge briefly prior to opening vial. For short-term storage (1-2 weeks), store at 4°C. For long-term storage, aliquot and store at -20°C or below. Avoid multiple freeze-thaw cycles.
Concentration	0.59 mg/ml (Please refer to the vial label for the specific concentration.)
Immunogen	Recombinant protein encompassing a sequence within the N-terminus region of human PPAR alpha. The exact sequence is proprietary.
Purification	Purified by antigen-affinity chromatography.
Conjugation	Unconjugated

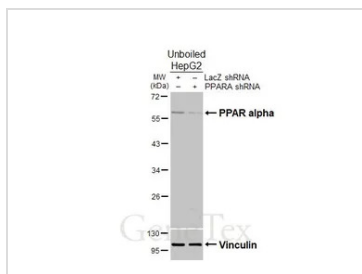


For full product information, images and publications, please visit our [website](#).

For laboratory research use only. Not for any clinical, therapeutic, or diagnostic use in humans or animals. Not for animal or human consumption.

Note

Purchasers shall not, and agree not to enable third parties to, analyze, copy, reverse engineer or otherwise attempt to determine the structure or sequence of the product.

DATA IMAGES

GTX101098 WB Image

Non-transfected (–) and transfected (+) unboiled HepG2 whole cell extracts (30 µg) were separated by 10% SDS-PAGE, and the membrane was blotted with PPAR alpha antibody (GTX101098) diluted at 1:1000. The HRP-conjugated anti-rabbit IgG antibody (GTX213110-01) was used to detect the primary antibody.

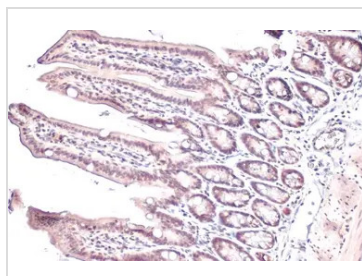

GTX101098 IHC-P Image

PPAR alpha antibody detects PPAR alpha protein at nucleus by immunohistochemical analysis.

Sample: Paraffin-embedded rat brain.

PPAR alpha stained by PPAR alpha antibody (GTX101098) diluted at 1:165.

Antigen Retrieval: Citrate buffer, pH 6.0, 15 min

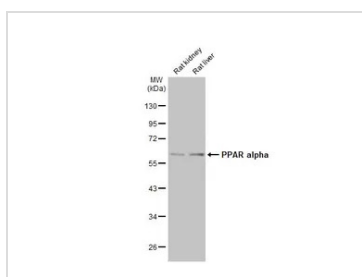

GTX101098 IHC-P Image

PPAR alpha antibody detects PPAR alpha protein at nucleus by immunohistochemical analysis.

Sample: Paraffin-embedded mouse intestine.

PPAR alpha stained by PPAR alpha antibody (GTX101098) diluted at 1:165.

Antigen Retrieval: Citrate buffer, pH 6.0, 15 min


GTX101098 WB Image

Various tissue extracts (50 µg) were separated by 10% SDS-PAGE, and the membrane was blotted with PPAR alpha antibody (GTX101098) diluted at 1:2000. The HRP-conjugated anti-rabbit IgG antibody (GTX213110-01) was used to detect the primary antibody.



For full product information, images and publications, please visit our [website](http://www.genetex.com).