

## Lamin A + C antibody

Cat. No. GTX101126

Host	Rabbit
Clonality	Polyclonal
Isotype	IgG
Application	WB, ICC/IF, IHC-P, IP
Reactivity	Human, Mouse

Reference ( 2 )

Package

100 µl, 25 µl

## APPLICATION

## Application Note

\*Optimal dilutions/concentrations should be determined by the researcher.

Suggested dilution	Recommended dilution
WB	1:500-1:10000
ICC/IF	1:100-1:1000
IHC-P	1:100-1:1000
IP	1:66-1:500

Not tested in other applications.

Calculated MW 74 kDa. ( [Note](#) )

## PROPERTIES

Form	Liquid
Buffer	0.1M Tris, 0.1M Glycine, 20% Glycerol
Preservative	0.01% Thimerosal
Storage	Store as concentrated solution. Centrifuge briefly prior to opening vial. For short-term storage (1-2 weeks), store at 4°C. For long-term storage, aliquot and store at -20°C or below. Avoid multiple freeze-thaw cycles.
Concentration	0.27 mg/ml (Please refer to the vial label for the specific concentration.)
Immunogen	Recombinant protein encompassing a sequence within the center region of human Lamin A + C. The exact sequence is proprietary.
Purification	Purified by antigen-affinity chromatography.
Conjugation	Unconjugated

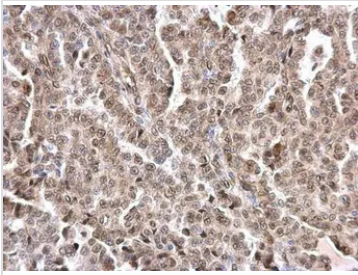


For full product information, images and publications, please visit our [website](#).

For laboratory research use only. Not for any clinical, therapeutic, or diagnostic use in humans or animals. Not for animal or human consumption.

**Note**

Purchasers shall not, and agree not to enable third parties to, analyze, copy, reverse engineer or otherwise attempt to determine the structure or sequence of the product.

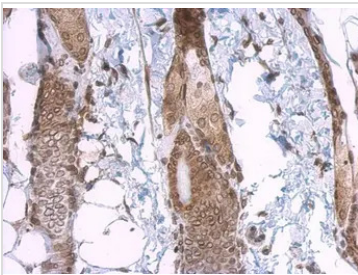
**DATA IMAGES**

**GTx101126 IHC-P Image**

Lamin A + C antibody detects Lamin A + C protein at nuclear envelope on human endometrial carcinoma by immunohistochemical analysis.

Sample: Paraffin-embedded human endometrial carcinoma.

Lamin A + C antibody (GTx101126) dilution: 1:500.

Antigen Retrieval: Trilogy™ (EDTA based, pH 8.0) buffer, 15min

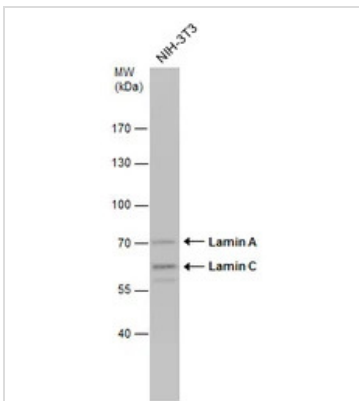

**GTx101126 IHC-P Image**

Lamin A + C antibody detects Lamin A + C protein at nuclear envelope on mouse skin by immunohistochemical analysis.

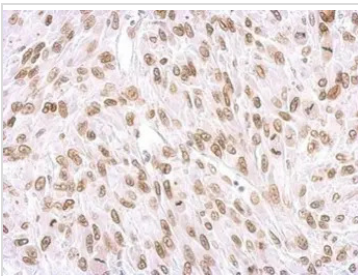
Sample: Paraffin-embedded mouse skin.

Lamin A + C antibody (GTx101126) dilution: 1:500.

Antigen Retrieval: Trilogy™ (EDTA based, pH 8.0) buffer, 15min


**GTx101126 WB Image**

Whole cell extract (30 µg) was separated by 7.5% SDS-PAGE, and the membrane was blotted with Lamin A + C antibody (GTx101126) diluted at 1:1000.


**GTx101126 IHC-P Image**

Lamin A + C antibody detects Lamin A + C protein at membrane on U87 xenograft by immunohistochemical analysis.

Sample: Paraffin-embedded U87 xenograft.

Lamin A + C antibody (GTx101126) dilution: 1:500.

Antigen Retrieval: Trilogy™ (EDTA based, pH 8.0) buffer, 15min



For full product information, images and publications, please visit our [website](https://www.genetex.com).