

Insulin Receptor beta antibody

Cat. No. GTX101136

Host	Rabbit
Clonality	Polyclonal
Isotype	IgG
Application	WB, ICC/IF, IHC-P
Reactivity	Human, Mouse, Rat, Zebrafish

Reference (7)

★★★★★ Review (1)

Package

100 µl, 25 µl

APPLICATION

Application Note

*Optimal dilutions/concentrations should be determined by the researcher.

Suggested dilution	Recommended dilution
WB	1:500-1:3000
ICC/IF	Assay dependent
IHC-P	1:100-1:1000

Not tested in other applications.

Calculated MW 156 kDa. ([Note](#))

PROPERTIES

Form	Liquid
Buffer	PBS, 20% Glycerol
Preservative	0.025% ProClin 300
Storage	Store as concentrated solution. Centrifuge briefly prior to opening vial. For short-term storage (1-2 weeks), store at 4°C. For long-term storage, aliquot and store at -20°C or below. Avoid multiple freeze-thaw cycles.
Concentration	1.31 mg/ml (Please refer to the vial label for the specific concentration.)
Immunogen	Recombinant protein encompassing a sequence within the Intracellular domain of human Insulin Receptor beta. The exact sequence is proprietary.
Purification	Purified by antigen-affinity chromatography.
Conjugation	Unconjugated

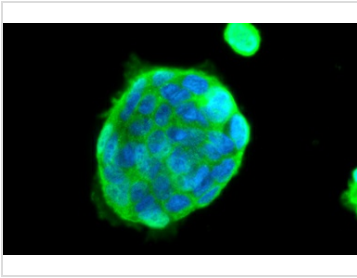
Note

For laboratory research use only. Not for any clinical, therapeutic, or diagnostic use in humans or animals. Not for animal or human consumption.

Purchasers shall not, and agree not to enable third parties to, analyze, copy, reverse engineer or otherwise attempt to determine the structure or sequence of the product.



For full product information, images and publications, please visit our [website](#).

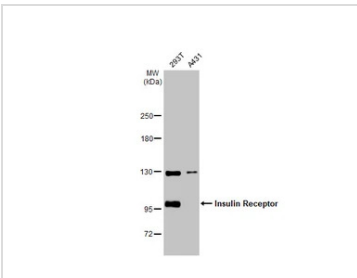
DATA IMAGES

GTXT101136 ICC/IF Image

Insulin Receptor beta antibody detects Insulin Receptor beta protein at cytoplasm and cell membrane by immunofluorescent analysis.

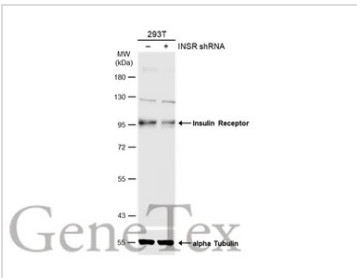
Sample: RT-4 cells were fixed in 4% paraformaldehyde at RT for 15 min.

Green: Insulin Receptor stained by Insulin Receptor beta antibody (GTXT101136) diluted at 1:500.

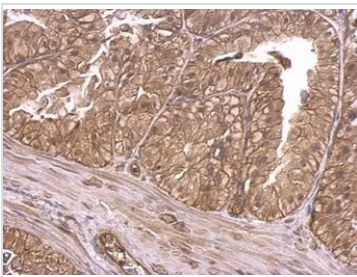
Blue: Fluoroshield with DAPI (GTXT30920).


GTXT101136 WB Image

Various whole cell extracts (30 µg) were separated by 5% SDS-PAGE, and the membrane was blotted with Insulin Receptor beta antibody (GTXT101136) diluted at 1:1000. The HRP-conjugated anti-rabbit IgG antibody (GTXT213110-01) was used to detect the primary antibody.


GTXT101136 WB Image

Non-transfected (–) and transfected (+) 293T whole cell extracts (30 µg) were separated by 7.5% SDS-PAGE, and the membrane was blotted with Insulin Receptor beta antibody (GTXT101136) diluted at 1:1000. The HRP-conjugated anti-rabbit IgG antibody (GTXT213110-01) was used to detect the primary antibody.


GTXT101136 IHC-P Image

Insulin Receptor beta antibody detects Insulin Receptor beta protein at membrane on mouse prostate by immunohistochemical analysis.

Sample: Paraffin-embedded mouse prostate.

Insulin Receptor beta antibody (GTXT101136) dilution: 1:500.

Antigen Retrieval: Trilogy™ (EDTA based, pH 8.0) buffer, 15min



For full product information, images and publications, please visit our [website](https://www.genetex.com).