

## HPRT antibody

Cat. No. GTX101148

Host	Rabbit
Clonality	Polyclonal
Isotype	IgG
Application	WB, ICC/IF, IHC-P
Reactivity	Human, Rat, Zebrafish

Package  
100 µl, 25 µl

## APPLICATION

## Application Note

\*Optimal dilutions/concentrations should be determined by the researcher.

Suggested dilution	Recommended dilution
WB	1:500-1:3000
ICC/IF	1:100-1:1000
IHC-P	1:100-1:1000

Not tested in other applications.

Calculated MW 25 kDa. ( [Note](#) )

## PROPERTIES

Form	Liquid
Buffer	0.1M Tris, 0.1M Glycine, 10% Glycerol
Preservative	0.01% Thimerosal
Storage	Store as concentrated solution. Centrifuge briefly prior to opening vial. For short-term storage (1-2 weeks), store at 4°C. For long-term storage, aliquot and store at -20°C or below. Avoid multiple freeze-thaw cycles.
Concentration	1 mg/ml (Please refer to the vial label for the specific concentration.)
Immunogen	Recombinant protein encompassing a sequence within the center region of human HPRT. The exact sequence is proprietary.
Purification	Purified by antigen-affinity chromatography.
Conjugation	Unconjugated

## Note

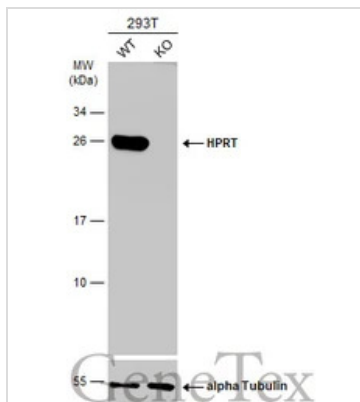
For laboratory research use only. Not for any clinical, therapeutic, or diagnostic use in humans or animals. Not for animal or human consumption.

Purchasers shall not, and agree not to enable third parties to, analyze, copy, reverse engineer or otherwise attempt to determine the structure or sequence of the product.

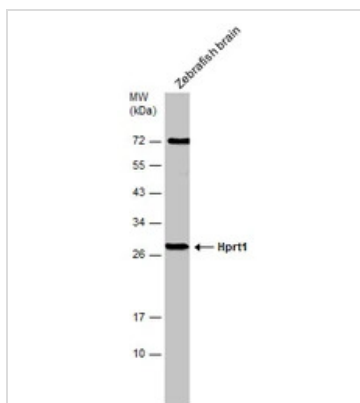


For full product information, images and publications, please visit our [website](#).

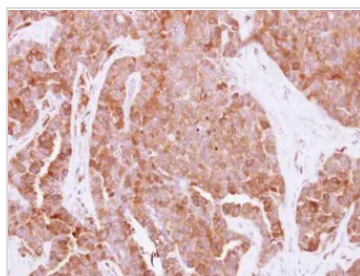
## DATA IMAGES


**GTX101148 WB Image**

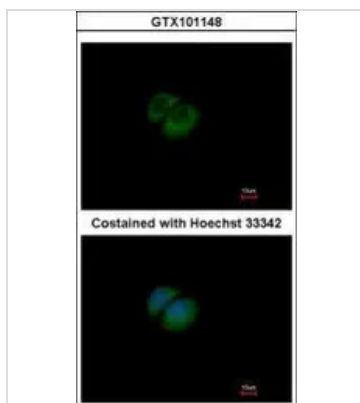
Wild-type (WT) and HPRT knockout (KO) 293T cell extracts (30 µg) were separated by 12% SDS-PAGE, and the membrane was blotted with HPRT antibody (GTX101148) diluted at 1:1000. The HRP-conjugated anti-rabbit IgG antibody (GTX213110-01) was used to detect the primary antibody.


**GTX101148 WB Image**

Zebrafish tissue extract (30 µg) was separated by 12% SDS-PAGE, and the membrane was blotted with HPRT antibody (GTX101148) diluted at 1:500.


**GTX101148 IHC-P Image**

Immunohistochemical analysis of paraffin-embedded human adenocarcinoma, using HPRT(GTX101148) antibody at 1:500 dilution.  
Antigen Retrieval: Trilogy™ (EDTA based, pH 8.0) buffer, 15min


**GTX101148 ICC/IF Image**

Immunofluorescence analysis of methanol-fixed A549, using HPRT(GTX101148) antibody at 1:500 dilution.



For full product information, images and publications, please visit our [website](https://www.genetex.com).