

MIF antibody [N1C3]

Cat. No. GTX101162

Host	Rabbit
Clonality	Polyclonal
Isotype	IgG
Applications	WB, ICC/IF, IHC-P, IHC-Fr, ELISA, Sandwich ELISA
Reactivity	Human, Mouse, Rat

References (4)

★★★★☆ Review (2)

Package

100 µl, 25 µl

Applications

Application Note

*Optimal dilutions/concentrations should be determined by the researcher.

Suggested dilution	Recommended dilution
WB	1:500-1:3000
ICC/IF	1:100-1:1000
IHC-P	1:100-1:1000
IHC-Fr	Assay dependent
ELISA	1:1000-1:10000
Sandwich ELISA	Assay dependent

Note : Capture: GTX101162 , Detection: GTX89535

Not tested in other applications.

Calculated MW 12 kDa. ([Note](#))

Properties

Form	Liquid
Buffer	PBS, 1% BSA, 20% Glycerol
Preservative	0.025% ProClin 300
Storage	Store as concentrated solution. Centrifuge briefly prior to opening vial. For short-term storage (1-2 weeks), store at 4°C. For long-term storage, aliquot and store at -20°C or below. Avoid multiple freeze-thaw cycles.
Concentration	0.1 mg/ml (Please refer to the vial label for the specific concentration.)
Immunogen	Recombinant protein encompassing a sequence within the center region of human MIF. The exact sequence is proprietary.
Purification	Purified by antigen-affinity chromatography.
Conjugation	Unconjugated

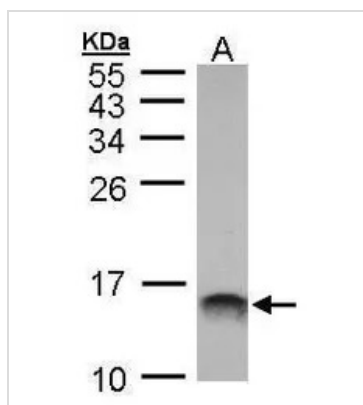


For full product information, images and publications, please visit our [website](#).

For laboratory research use only. Not for any clinical, therapeutic, or diagnostic use in humans or animals. Not for animal or human consumption.

Note

Purchasers shall not, and agree not to enable third parties to, analyze, copy, reverse engineer or otherwise attempt to determine the structure or sequence of the product.

DATA IMAGES

GTX101162 WB Image

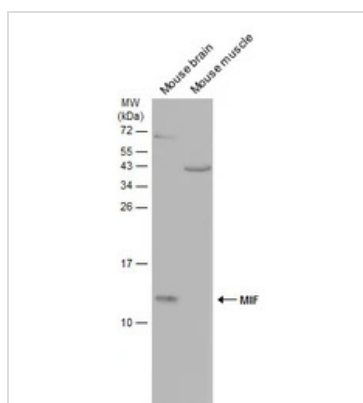
Sample (30 µg of whole cell lysate)

A: Molt-4 (GTX27912)

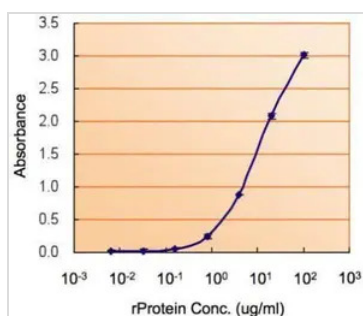
15% SDS PAGE

GTX101162 diluted at 1:1000

The HRP-conjugated anti-rabbit IgG antibody (GTX213110-01) was used to detect the primary antibody.


GTX101162 WB Image

Various tissue extracts (50 µg) were separated by 15% SDS-PAGE, and the membrane was blotted with MIF antibody [N1C3] (GTX101162) diluted at 1:1000. The HRP-conjugated anti-rabbit IgG antibody (GTX213110-01) was used to detect the primary antibody, and the signal was developed with Trident ECL plus-Enhanced.


GTX101162 ELISA Image

ELISA detection of MIF using GTX101162 for capture at a concentration of 5 µg/mL and GTX89535 for detection at a concentration of 1.5 µg/mL.



For full product information, images and publications, please visit our [website](https://www.genetex.com).