

## MEF2A antibody [N1N2], N-term

Cat. No. GTX101163

Host	Rabbit
Clonality	Polyclonal
Isotype	IgG
Applications	WB, ICC/IF, IHC-Wm
Reactivity	Human, Zebrafish

Package  
100 µl, 25 µl

## Applications

## Application Note

\*Optimal dilutions/concentrations should be determined by the researcher.

Suggested dilution	Recommended dilution
WB	1:500-1:3000
ICC/IF	1:100-1:1000
IHC-Wm	1:100-1:500

Not tested in other applications.

Calculated MW 55 kDa. ( [Note](#) )

## Properties

Form	Liquid
Buffer	0.1M Tris, 0.1M Glycine, 10% Glycerol
Preservative	0.01% Thimerosal
Storage	Store as concentrated solution. Centrifuge briefly prior to opening vial. For short-term storage (1-2 weeks), store at 4°C. For long-term storage, aliquot and store at -20°C or below. Avoid multiple freeze-thaw cycles.
Concentration	0.77 mg/ml (Please refer to the vial label for the specific concentration.)
Immunogen	Recombinant protein encompassing a sequence within the N-terminus region of human MEF2A. The exact sequence is proprietary.
Purification	Purified by antigen-affinity chromatography.
Conjugation	Unconjugated

## Note

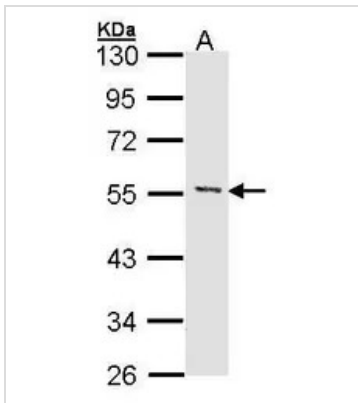
For laboratory research use only. Not for any clinical, therapeutic, or diagnostic use in humans or animals. Not for animal or human consumption.

Purchasers shall not, and agree not to enable third parties to, analyze, copy, reverse engineer or otherwise attempt to determine the structure or sequence of the product.



For full product information, images and publications, please visit our [website](#).

## DATA IMAGES



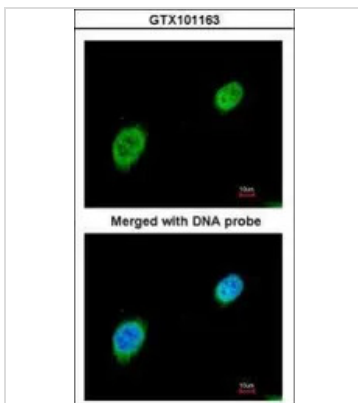
### GTx101163 WB Image

Sample (30 ug of whole cell lysate)

A: Hela

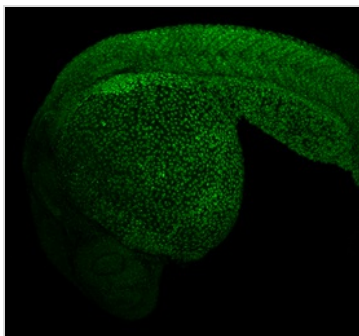
10% SDS PAGE

GTx101163 diluted at 1:1000



### GTx101163 ICC/IF Image

Immunofluorescence analysis of paraformaldehyde-fixed HeLa, using MEF2A(GTx101163) antibody at 1:200 dilution.



### GTx101163 IHC-Wm Image

MEF2A antibody [N1N2], N-term detects MEF2A protein on whole mount zebrafish by immunohistochemical analysis.

Sample: Paraformaldehyde-fixed 1 day-post-fertilization zebrafish embryo.

Green: MEF2A stained by MEF2A antibody [N1N2], N-term (GTx101163) diluted at 1:100.



For full product information, images and publications, please visit our [website](https://www.genetex.com).