

## Galactosidase alpha antibody [N1C2]

Cat. No. GTX101178

Host	Rabbit
Clonality	Polyclonal
Isotype	IgG
Application	WB, IHC-P, IP
Reactivity	Human, Rat

Reference ( 3 )

★★★★★ Review ( 1 )

Package

100 µl, 25 µl

## APPLICATION

## Application Note

\*Optimal dilutions/concentrations should be determined by the researcher.

Suggested dilution	Recommended dilution
WB	1:500-1:3000
IHC-P	1:100-1:1000
IP	1:100-1:500

Not tested in other applications.

**Calculated MW** 49 kDa. ( [Note](#) )

**Product Note** Knockdown/Knockout validation was supported by customer review data.

## PROPERTIES

Form	Liquid
Buffer	PBS, 20% Glycerol
Preservative	0.025% ProClin 300
Storage	Store as concentrated solution. Centrifuge briefly prior to opening vial. For short-term storage (1-2 weeks), store at 4°C. For long-term storage, aliquot and store at -20°C or below. Avoid multiple freeze-thaw cycles.
Concentration	0.16 mg/ml (Please refer to the vial label for the specific concentration.)
Immunogen	Recombinant protein encompassing a sequence within the center region of human Galactosidase alpha. The exact sequence is proprietary.
Purification	Purified by antigen-affinity chromatography.
Conjugation	Unconjugated



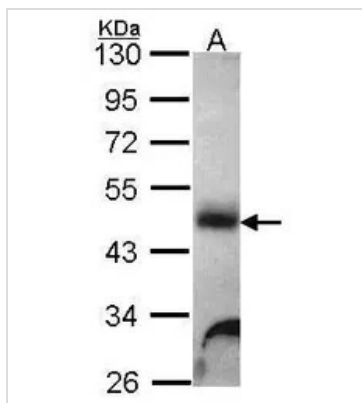
For full product information, images and publications, please visit our [website](#).

For laboratory research use only. Not for any clinical, therapeutic, or diagnostic use in humans or animals. Not for animal or human consumption.

## Note

Purchasers shall not, and agree not to enable third parties to, analyze, copy, reverse engineer or otherwise attempt to determine the structure or sequence of the product.

## DATA IMAGES



### GTx101178 WB Image

Sample (30 µg of whole cell lysate)

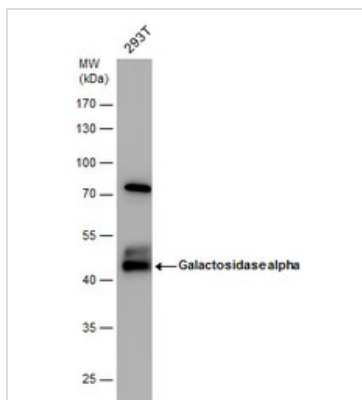
A: HeLa

10% SDS PAGE

Galactosidase alpha antibody

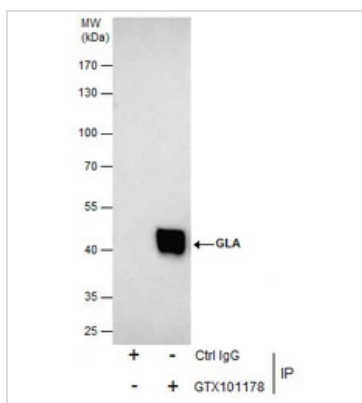
GTx101178 diluted at 1:1000

The HRP-conjugated anti-rabbit IgG antibody (GTx213110-01) was used to detect the primary antibody.



### GTx101178 WB Image

Galactosidase alpha antibody detects Galactosidase alpha protein by western blot analysis. Whole cell extracts (30 µg) was separated by 10% SDS-PAGE, and the membrane was blotted with Galactosidase alpha antibody (GTx101178) at a dilution of 1:1000. The HRP-conjugated anti-rabbit IgG antibody (GTx213110-01) was used to detect the primary antibody.



### GTx101178 IP Image

Immunoprecipitation of GLA protein from 293T whole cell extracts using 5 µg of Galactosidase alpha antibody [N1C2] (GTx101178).

Western blot analysis was performed using Galactosidase alpha antibody [N1C2] (GTx101178) diluted at 1:500.

EasyBlot anti-Rabbit IgG (GTx221666-01) was used as a secondary reagent.



For full product information, images and publications, please visit our [website](https://www.genetex.com).