

GGT1 antibody

Cat. No. GTX101198

Host	Rabbit
Clonality	Polyclonal
Isotype	IgG
Applications	WB, IHC-P
Reactivity	Human, Mouse

References (5)

Package

100 µl, 25 µl

Applications

Application Note

*Optimal dilutions/concentrations should be determined by the researcher.

Suggested dilution	Recommended dilution
WB	1:500-1:3000
IHC-P	1:100-1:1000

Not tested in other applications.

Calculated MW 61 kDa. ([Note](#))**Product Note** Based on sequence homology, this antibody may cross react with GGT2 protein.

Properties

Form	Liquid
Buffer	PBS, 20% Glycerol
Preservative	0.025% ProClin 300
Storage	Store as concentrated solution. Centrifuge briefly prior to opening vial. For short-term storage (1-2 weeks), store at 4°C. For long-term storage, aliquot and store at -20°C or below. Avoid multiple freeze-thaw cycles.
Concentration	0.71 mg/ml (Please refer to the vial label for the specific concentration.)
Immunogen	Recombinant protein encompassing a sequence within the Extracellular domain of human GGT1. The exact sequence is proprietary.
Purification	Purified by antigen-affinity chromatography.
Conjugation	Unconjugated

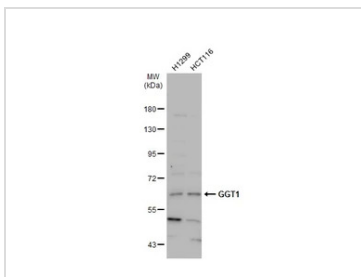
Note

For laboratory research use only. Not for any clinical, therapeutic, or diagnostic use in humans or animals. Not for animal or human consumption.

Purchasers shall not, and agree not to enable third parties to, analyze, copy, reverse engineer or otherwise attempt to determine the structure or sequence of the product.

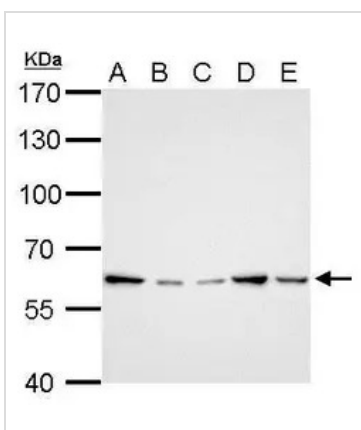
For full product information, images and publications, please visit our [website](#).

DATA IMAGES



GTX101198 WB Image

Various whole cell extracts (30 µg) were separated by 7.5% SDS-PAGE, and the membrane was blotted with GGT1 antibody (GTX101198) diluted at 1:1000. The HRP-conjugated anti-rabbit IgG antibody (GTX213110-01) was used to detect the primary antibody.



GTX101198 WB Image

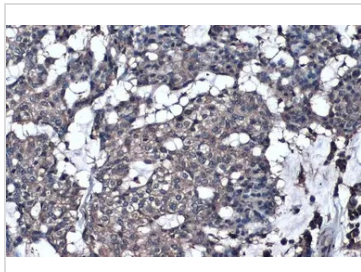
GGT1 antibody detects GGT1 protein by western blot analysis.

- A. 30 µg Neuro2A whole cell lysate/extract
- B. 30 µg GL261 whole cell lysate/extract
- C. 30 µg C8D30 whole cell lysate/extract
- D. 30 µg NIH-3T3 whole cell lysate/extract
- E. 30 µg Raw264.7 whole cell lysate/extract
- F. 30 µg C2C12 whole cell lysate/extract

7.5% SDS-PAGE

GGT1 antibody (GTX101198) dilution: 1:1000

The HRP-conjugated anti-rabbit IgG antibody (GTX213110-01) was used to detect the primary antibody.



GTX101198 IHC-P Image

GGT1 antibody detects GGT1 protein at cell membrane by immunohistochemical analysis.

Sample: Paraffin-embedded human breast carcinoma.

GGT1 stained by GGT1 antibody (GTX101198) diluted at 1:500.

Antigen Retrieval: Citrate buffer, pH 6.0, 15 min



For full product information, images and publications, please visit our [website](#).