

Prothrombin antibody

Cat. No. GTX101199

Host	Rabbit
Clonality	Polyclonal
Isotype	IgG
Application	WB
Reactivity	Human, Mouse, Rat

Package
100 µl, 25 µl

APPLICATION

Application Note

*Optimal dilutions/concentrations should be determined by the researcher.

Suggested dilution	Recommended dilution
WB	1:500-1:3000
Not tested in other applications.	

Calculated MW 70 kDa. ([Note](#))

PROPERTIES

Form	Liquid
Buffer	PBS, 20% Glycerol
Preservative	0.01% Thimerosal
Storage	Store as concentrated solution. Centrifuge briefly prior to opening vial. For short-term storage (1-2 weeks), store at 4°C. For long-term storage, aliquot and store at -20°C or below. Avoid multiple freeze-thaw cycles.
Concentration	1 mg/ml (Please refer to the vial label for the specific concentration.)
Immunogen	Recombinant protein encompassing a sequence within the N-terminus region of human Prothrombin. The exact sequence is proprietary.
Purification	Purified by antigen-affinity chromatography.
Conjugation	Unconjugated

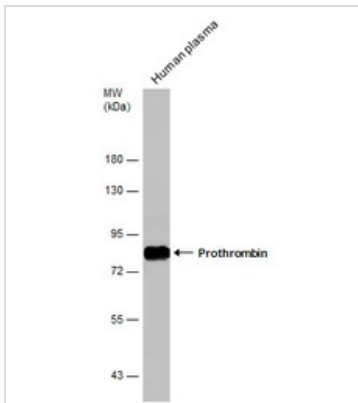
Note

For laboratory research use only. Not for any clinical, therapeutic, or diagnostic use in humans or animals. Not for animal or human consumption.

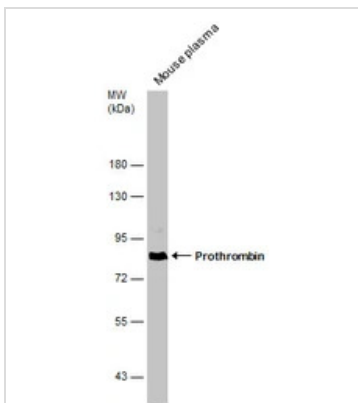
Purchasers shall not, and agree not to enable third parties to, analyze, copy, reverse engineer or otherwise attempt to determine the structure or sequence of the product.



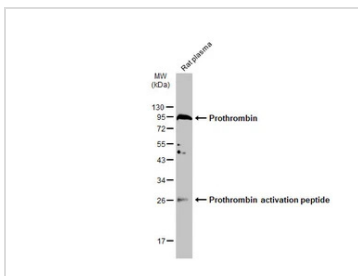
For full product information, images and publications, please visit our [website](#).

DATA IMAGES

GTXT101199 WB Image

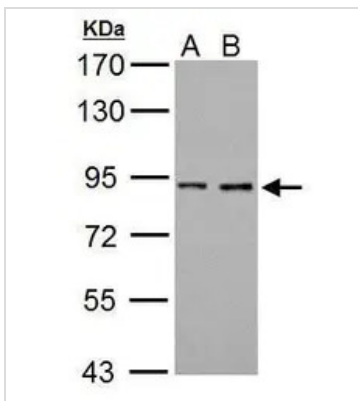
Human tissue extract (30 µg) was separated by 7.5% SDS-PAGE, and the membrane was blotted with Prothrombin antibody (GTXT101199) diluted at 1:500.


GTXT101199 WB Image

Mouse tissue extract (50 µg) was separated by 7.5% SDS-PAGE, and the membrane was blotted with Prothrombin antibody (GTXT101199) diluted at 1:500.


GTXT101199 WB Image

Rat plasma (50 µg) was separated by 12% SDS-PAGE, and the membrane was blotted with Prothrombin antibody (GTXT101199) diluted at 1:500. The HRP-conjugated anti-rabbit IgG antibody (GTXT213110-01) was used to detect the primary antibody.


GTXT101199 WB Image

Sample (30 ug of whole cell lysate)
A: 293T
B: A431
7.5% SDS PAGE
GTXT101199 diluted at 1:1000



For full product information, images and publications, please visit our [website](https://www.genetex.com).