

beta Catenin antibody

Cat. No. GTX101254

Host	Rabbit
Clonality	Polyclonal
Isotype	IgG
Application	WB, ICC/IF, IHC-P, IHC
Reactivity	Human, Mouse

Reference (7)

Package

100 µl, 25 µl

APPLICATION

Application Note

*Optimal dilutions/concentrations should be determined by the researcher.

Suggested dilution	Recommended dilution
WB	1:500-1:3000
ICC/IF	Assay dependent
IHC-P	1:100-1:1000
IHC	Assay dependent

Not tested in other applications.

Calculated MW 85 kDa. ([Note](#))

PROPERTIES

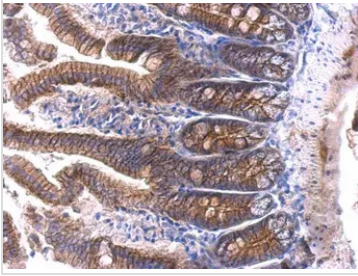
Form	Liquid
Buffer	0.1M Tris, 0.1M Glycine, 10% Glycerol
Preservative	0.01% Thimerosal
Storage	Store as concentrated solution. Centrifuge briefly prior to opening vial. For short-term storage (1-2 weeks), store at 4°C. For long-term storage, aliquot and store at -20°C or below. Avoid multiple freeze-thaw cycles.
Concentration	1.01 mg/ml (Please refer to the vial label for the specific concentration.)
Immunogen	Recombinant protein encompassing a sequence within the center region of human beta Catenin. The exact sequence is proprietary.
Purification	Purified by antigen-affinity chromatography.
Conjugation	Unconjugated

For full product information, images and publications, please visit our [website](#).

For laboratory research use only. Not for any clinical, therapeutic, or diagnostic use in humans or animals. Not for animal or human consumption.

Note

Purchasers shall not, and agree not to enable third parties to, analyze, copy, reverse engineer or otherwise attempt to determine the structure or sequence of the product.

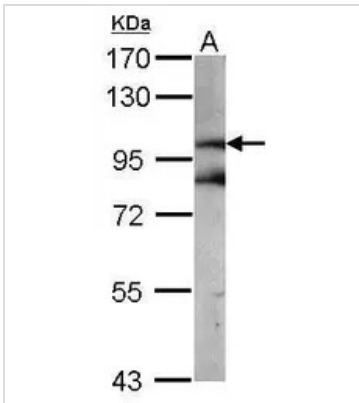
DATA IMAGES

GTX101254 IHC-P Image

beta Catenin antibody detects beta Catenin protein at membrane on mouse intestine by immunohistochemical analysis.

Sample: Paraffin-embedded mouse intestine.

beta Catenin antibody (GTX101254) dilution: 1:500.

Antigen Retrieval: Trilogy™ (EDTA based, pH 8.0) buffer, 15min

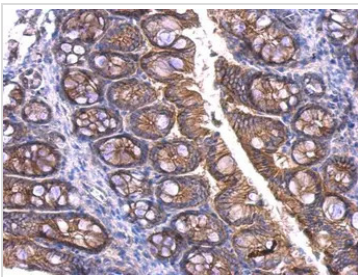

GTX101254 WB Image

Sample (50 ug of whole cell lysate)

A: mouse brain

7.5% SDS PAGE

GTX101254 diluted at 1:1000


GTX101254 IHC-P Image

beta Catenin antibody detects beta Catenin protein at membrane on mouse colon by immunohistochemical analysis.

Sample: Paraffin-embedded mouse colon.

beta Catenin antibody (GTX101254) dilution: 1:500.

Antigen Retrieval: Trilogy™ (EDTA based, pH 8.0) buffer, 15min



For full product information, images and publications, please visit our [website](https://www.genetex.com).