

## HMGB1 antibody

Cat. No. GTX101277

<b>Host</b>	Rabbit
<b>Clonality</b>	Polyclonal
<b>Isotype</b>	IgG
<b>Applications</b>	WB, ICC/IF, IHC-P, IHC-Wm, IHC, IHC (Free Floating)
<b>Reactivity</b>	Human, Mouse, Rat, Zebrafish, Pig

References ( 23 )

★★★★★ Review ( 1 )

Package

100 µl, 25 µl

## Applications

## Application Note

\*Optimal dilutions/concentrations should be determined by the researcher.

Suggested dilution	Recommended dilution
WB	1:500-1:3000
ICC/IF	1:100-1:1000
IHC-P	1:100-1:1000
IHC-Wm	Assay dependent
IHC	Assay dependent
IHC (Free Floating)	Assay dependent

Not tested in other applications.

**Calculated MW** 25 kDa. ( [Note](#) )

## Properties

<b>Form</b>	Liquid
<b>Buffer</b>	PBS, 1% BSA, 20% Glycerol
<b>Preservative</b>	0.025% ProClin 300
<b>Storage</b>	Store as concentrated solution. Centrifuge briefly prior to opening vial. For short-term storage (1-2 weeks), store at 4°C. For long-term storage, aliquot and store at -20°C or below. Avoid multiple freeze-thaw cycles.
<b>Concentration</b>	0.43 mg/ml (Please refer to the vial label for the specific concentration.)
<b>Immunogen</b>	Recombinant protein encompassing a sequence within the center region of human HMGB1. The exact sequence is proprietary.
<b>Purification</b>	Purified by antigen-affinity chromatography.
<b>Conjugation</b>	Unconjugated

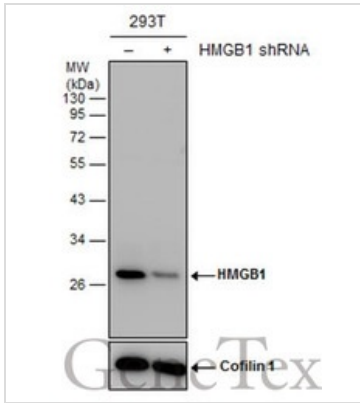


For full product information, images and publications, please visit our [website](#).

For laboratory research use only. Not for any clinical, therapeutic, or diagnostic use in humans or animals. Not for animal or human consumption.

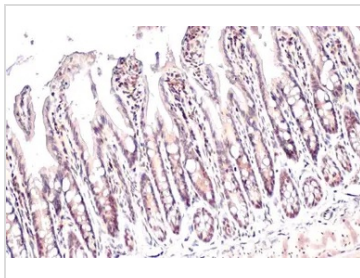
**Note**  
 Purchasers shall not, and agree not to enable third parties to, analyze, copy, reverse engineer or otherwise attempt to determine the structure or sequence of the product.

DATA IMAGES



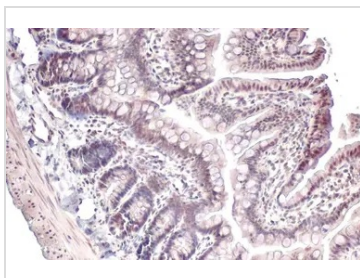
**GTX101277 WB Image**

Non-transfected (-) and transfected (+) 293T whole cell extracts (30 µg) were separated by 12% SDS-PAGE, and the membrane was blotted with HMGB1 antibody (GTX101277) diluted at 1:5000. The HRP-conjugated anti-rabbit IgG antibody (GTX213110-01) was used to detect the primary antibody.



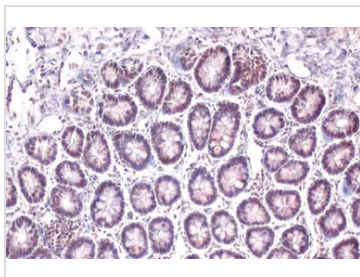
**GTX101277 IHC-P Image**

HMGB1 antibody detects HMGB1 protein at nucleus by immunohistochemical analysis.  
 Sample: Paraffin-embedded mouse intestine.  
 HMGB1 stained by HMGB1 antibody (GTX101277) diluted at 1:500.  
 Antigen Retrieval: Citrate buffer, pH 6.0, 15 min



**GTX101277 IHC-P Image**

HMGB1 antibody detects HMGB1 protein at nucleus by immunohistochemical analysis.  
 Sample: Paraffin-embedded rat colon.  
 HMGB1 stained by HMGB1 antibody (GTX101277) diluted at 1:500.  
 Antigen Retrieval: Citrate buffer, pH 6.0, 15 min



**GTX101277 IHC-P Image**

HMGB1 antibody detects HMGB1 protein at nucleus by immunohistochemical analysis.  
 Sample: Paraffin-embedded rat colon.  
 HMGB1 stained by HMGB1 antibody (GTX101277) diluted at 1:500.  
 Antigen Retrieval: Citrate buffer, pH 6.0, 15 min



For full product information, images and publications, please visit our [website](#).