

## HMGB1 antibody

Cat. No. GTX101277

|              |   |
|--------------|---|
| Host         | Rabbit  |
| Clonality    | Polyclonal  |
| Isotype      | IgG   |
| Applications | WB, ICC/IF, IHC-P, IHC-Wm, IHC, IHC (Free Floating) |
| Reactivity   | Human, Mouse, Rat, Zebrafish, Pig                   |

References ( 23 )

★★★★★ Review ( 1 )

Package

100 µl, 25 µl

## Applications

## Application Note

\*Optimal dilutions/concentrations should be determined by the researcher.

| Suggested dilution  | Recommended dilution |
|---------------------|----------------------|
| WB                  | 1:500-1:3000         |
| ICC/IF              | 1:100-1:1000         |
| IHC-P               | 1:100-1:1000         |
| IHC-Wm              | Assay dependent      |
| IHC                 | Assay dependent      |
| IHC (Free Floating) | Assay dependent      |

Not tested in other applications.

Calculated MW 25 kDa. ( [Note](#) )

## Properties

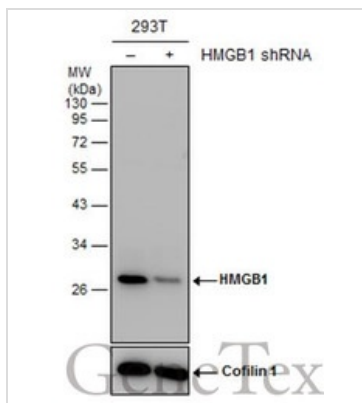
|               |  |
|---------------|--|
| Form          | Liquid   |
| Buffer        | PBS, 1% BSA, 20% Glycerol  |
| Preservative  | 0.025% ProClin 300   |
| Storage       | Store as concentrated solution. Centrifuge briefly prior to opening vial. For short-term storage (1-2 weeks), store at 4°C. For long-term storage, aliquot and store at -20°C or below. Avoid multiple freeze-thaw cycles. |
| Concentration | 0.43 mg/ml (Please refer to the vial label for the specific concentration.)  |
| Immunogen     | Recombinant protein encompassing a sequence within the center region of human HMGB1. The exact sequence is proprietary.  |
| Purification  | Purified by antigen-affinity chromatography.   |
| Conjugation   | Unconjugated   |

For full product information, images and publications, please visit our [website](#).

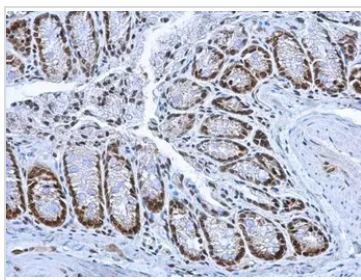
For laboratory research use only. Not for any clinical, therapeutic, or diagnostic use in humans or animals. Not for animal or human consumption.

**Note**

Purchasers shall not, and agree not to enable third parties to, analyze, copy, reverse engineer or otherwise attempt to determine the structure or sequence of the product.

**DATA IMAGES**

**GTx101277 WB Image**

Non-transfected (-) and transfected (+) 293T whole cell extracts (30 µg) were separated by 12% SDS-PAGE, and the membrane was blotted with HMGB1 antibody (GTx101277) diluted at 1:5000. The HRP-conjugated anti-rabbit IgG antibody (GTx213110-01) was used to detect the primary antibody.

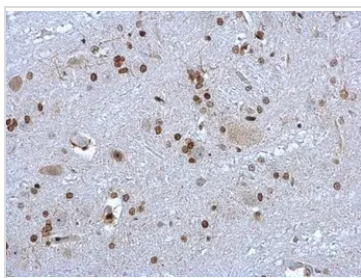

**GTx101277 IHC-P Image**

HMGB1 antibody detects HMGB1 protein at nucleus on mouse colon by immunohistochemical analysis.

Sample: Paraffin-embedded mouse colon.

HMGB1 antibody (GTx101277) dilution: 1:1000.

Antigen Retrieval: Trilogy™ (EDTA based, pH 8.0) buffer, 15min

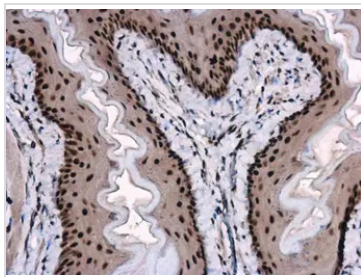

**GTx101277 IHC-P Image**

HMGB1 antibody detects HMGB1 protein at nucleus on rat brain stem by immunohistochemical analysis.

Sample: Paraffin-embedded rat brain stem.

HMGB1 antibody (GTx101277) dilution: 1:1000.

Antigen Retrieval: Trilogy™ (EDTA based, pH 8.0) buffer, 15min


**GTx101277 IHC-P Image**

HMGB1 antibody detects HMGB1 protein at nucleus in mouse esophagus by immunohistochemical analysis.

Sample: Paraffin-embedded mouse esophagus.

HMGB1 antibody (GTx101277) diluted at 1:1000.

Antigen Retrieval: Citrate buffer, pH 6.0, 15 min



For full product information, images and publications, please visit our [website](http://www.genetex.com).