

ATRX antibody [C3], C-term

Cat. No. GTX101310

Host	Rabbit
Clonality	Polyclonal
Isotype	IgG
Applications	WB, ICC/IF, IHC-P, IP
Reactivity	Human, Mouse, Rat

References (6)

Package

100 µl, 25 µl

Applications

Application Note

*Optimal dilutions/concentrations should be determined by the researcher.

Suggested dilution	Recommended dilution
WB	1:500-1:3000
ICC/IF	1:100-1:1000
IHC-P	1:100-1:1000
IP	1:100-1:500

Not tested in other applications.

Calculated MW 283 kDa. ([Note](#))

Properties

Form	Liquid
Buffer	PBS, 1% BSA, 20% Glycerol
Preservative	0.025% ProClin 300
Storage	Store as concentrated solution. Centrifuge briefly prior to opening vial. For short-term storage (1-2 weeks), store at 4°C. For long-term storage, aliquot and store at -20°C or below. Avoid multiple freeze-thaw cycles.
Concentration	0.27 mg/ml (Please refer to the vial label for the specific concentration.)
Immunogen	Recombinant protein encompassing a sequence within the C-terminus region of human ATRX. The exact sequence is proprietary.
Purification	Purified by antigen-affinity chromatography.
Conjugation	Unconjugated

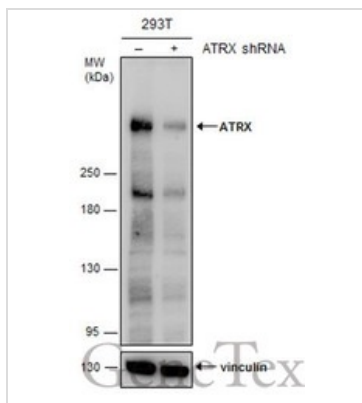


For full product information, images and publications, please visit our [website](#).

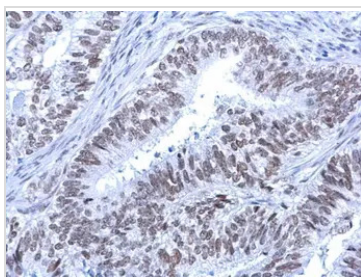
For laboratory research use only. Not for any clinical, therapeutic, or diagnostic use in humans or animals. Not for animal or human consumption.

Note

Purchasers shall not, and agree not to enable third parties to, analyze, copy, reverse engineer or otherwise attempt to determine the structure or sequence of the product.

DATA IMAGES

GTK101310 WB Image

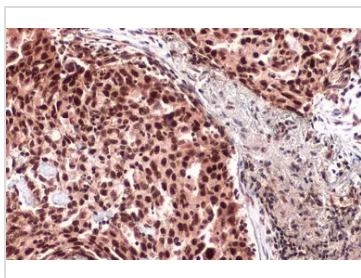
Non-transfected (–) and transfected (+) 293T whole cell extracts (30 µg) were separated by 5% SDS-PAGE, and the membrane was blotted with ATRX antibody [C3], C-term (GTK101310) diluted at 1:2000. The HRP-conjugated anti-rabbit IgG antibody (GTK213110-01) was used to detect the primary antibody.


GTK101310 IHC-P Image

Rad54 antibody [C3], C-term detects Rad54 protein at nucleus on human endometrial carcinoma by immunohistochemical analysis.

Sample: Paraffin-embedded human endometrial carcinoma.

Rad54 antibody [C3], C-term (GTK101310) dilution: 1:500.

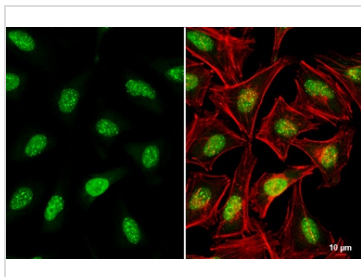

GTK101310 IHC-P Image

ATRX antibody [C3], C-term detects ATRX protein at cytoplasm and nucleus by immunohistochemical analysis.

Sample: Paraffin-embedded human lung cancer.

ATRX stained by ATRX antibody [C3], C-term (GTK101310) diluted at 1:500.

Antigen Retrieval: Citrate buffer, pH 6.0, 15 min


GTK101310 ICC/IF Image

ATRX antibody [C3], C-term detects ATRX protein at nucleus by immunofluorescent analysis.

Sample: HeLa cells were fixed in 4% paraformaldehyde at RT for 15 min.

Green: ATRX stained by ATRX antibody [C3], C-term (GTK101310) diluted at 1:1000.

Red: phalloidin, a cytoskeleton marker, diluted at 1:200.

Scale bar= 10 µm.



For full product information, images and publications, please visit our [website](https://www.genetex.com).