

beta 2 Microglobulin antibody [N1C3]

Cat. No. GTX101314

Host	Rabbit
Clonality	Polyclonal
Isotype	IgG
Applications	WB
Reactivity	Human, Rat

Package
100 µl, 25 µl

Applications

Application Note

*Optimal dilutions/concentrations should be determined by the researcher.

Suggested dilution	Recommended dilution
WB	1:500-1:3000

Not tested in other applications.

Calculated MW 14 kDa. ([Note](#))

Properties

Form	Liquid
Buffer	PBS, 10% Glycerol
Preservative	0.01% Thimerosal
Storage	Store as concentrated solution. Centrifuge briefly prior to opening vial. For short-term storage (1-2 weeks), store at 4°C. For long-term storage, aliquot and store at -20°C or below. Avoid multiple freeze-thaw cycles.
Concentration	0.41 mg/ml (Please refer to the vial label for the specific concentration.)
Immunogen	Recombinant protein encompassing a sequence within the center region of human beta 2 Microglobulin. The exact sequence is proprietary.
Purification	Purified by antigen-affinity chromatography.
Conjugation	Unconjugated

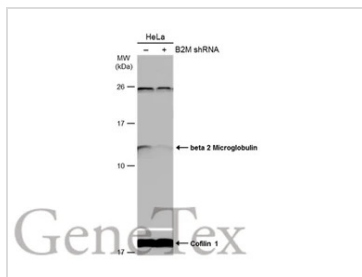
Note

For laboratory research use only. Not for any clinical, therapeutic, or diagnostic use in humans or animals. Not for animal or human consumption.

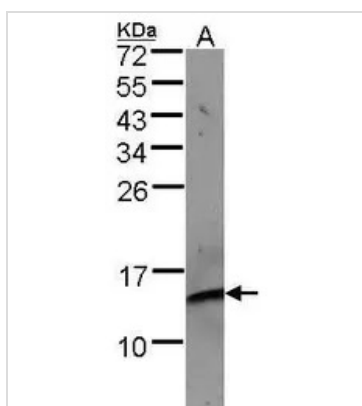
Purchasers shall not, and agree not to enable third parties to, analyze, copy, reverse engineer or otherwise attempt to determine the structure or sequence of the product.



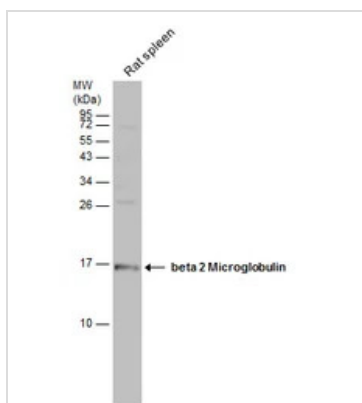
For full product information, images and publications, please visit our [website](#).

DATA IMAGES

GTX101314 WB Image

Non-transfected (–) and transfected (+) HeLa whole cell extracts (50 µg) were separated by 15% SDS-PAGE, and the membrane was blotted with beta 2 Microglobulin antibody [N1C3] (GTX101314) diluted at 1:500. The HRP-conjugated anti-rabbit IgG antibody (GTX213110-01) was used to detect the primary antibody.


GTX101314 WB Image

Sample(30 µg of whole cell lysate)
A:Raji (GTX27908)
15% SDS PAGE
GTX101314 diluted at 1:500


GTX101314 WB Image

Rat tissue extract (50 µg) was separated by 15% SDS-PAGE, and the membrane was blotted with beta 2 Microglobulin antibody [N1C3] (GTX101314) diluted at 1:500.



For full product information, images and publications, please visit our [website](https://www.genetex.com).