

Bid antibody [N1C3]

Cat. No. GTX101323

| | |
|-------------|------------|
| Host | Rabbit |
| Clonality | Polyclonal |
| Isotype | IgG |
| Application | WB, IP |
| Reactivity | Human |

Reference (1)

Package

100 µl, 25 µl

APPLICATION

Application Note

*Optimal dilutions/concentrations should be determined by the researcher.

| Suggested dilution | Recommended dilution |
|--------------------|----------------------|
| WB | 1:1000-1:10000 |
| IP | 1:100-1:500 |

Not tested in other applications.

| | |
|---------------|--|
| Calculated MW | 22 kDa. (Note) |
| Product Note | IP/MS validation was supported by references (PMID:30377376) |

PROPERTIES

| | |
|---------------|--|
| Form | Liquid |
| Buffer | 0.1M Tris, 0.1M Glycine, 10% Glycerol |
| Preservative | 0.01% Thimerosal |
| Storage | Store as concentrated solution. Centrifuge briefly prior to opening vial. For short-term storage (1-2 weeks), store at 4°C. For long-term storage, aliquot and store at -20°C or below. Avoid multiple freeze-thaw cycles. |
| Concentration | 0.8 mg/ml (Please refer to the vial label for the specific concentration.) |
| Immunogen | Recombinant protein encompassing a sequence within the center region of human Bid. The exact sequence is proprietary. |
| Purification | Purified by antigen-affinity chromatography. |
| Conjugation | Unconjugated |

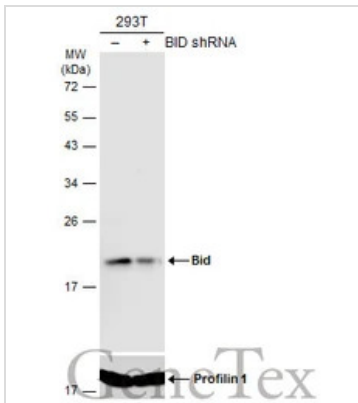
Note

For laboratory research use only. Not for any clinical, therapeutic, or diagnostic use in humans or animals. Not for animal or human consumption.

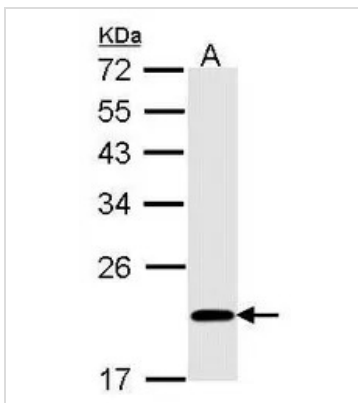
Purchasers shall not, and agree not to enable third parties to, analyze, copy, reverse engineer or otherwise attempt to determine the structure or sequence of the product.



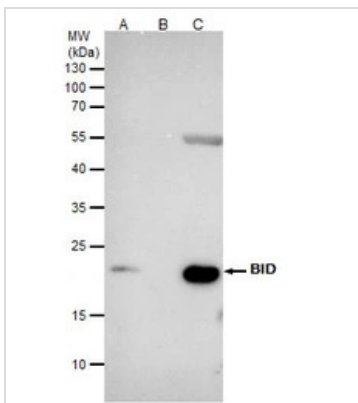
For full product information, images and publications, please visit our [website](#).

DATA IMAGES

GTXT101323 WB Image

Non-transfected (–) and transfected (+) 293T whole cell extracts (60 µg) were separated by 12% SDS-PAGE, and the membrane was blotted with Bid antibody [N1C3] (GTXT101323) diluted at 1:5000. The HRP-conjugated anti-rabbit IgG antibody (GTXT213110-01) was used to detect the primary antibody.


GTXT101323 WB Image

Sample (30 ug of whole cell lysate)
A: A431 (GTXT27909)
12% SDS PAGE
GTXT101323 diluted at 1:1000


GTXT101323 IP Image

Bid antibody [N1C3] immunoprecipitates BID protein in IP experiments.

IP samples: Jurkat whole cell extract

A. 40 µg Jurkat whole cell extract

B. Control with 4 µg of preimmune Rabbit IgG

C. Immunoprecipitation of BID protein by 4 µg Bid antibody [N1C3] (GTXT101323)

5 % SDS-PAGE

The immunoprecipitated BID protein was detected by Bid antibody [N1C3] (GTXT101323) diluted at 1:500.

[EasyBlot anti-rabbit IgG (GTXT221666-01) was used as a secondary reagent]



For full product information, images and publications, please visit our [website](https://www.genetex.com).