

APP antibody [C2C3], C-term

Cat. No. GTX101336

Host	Rabbit
Clonality	Polyclonal
Isotype	IgG
Application	WB, ICC/IF, IHC-P, IHC-Fr
Reactivity	Human, Mouse, Rat

Reference (6)

★★★★★ Review (2)

Package

100 µl, 25 µl

APPLICATION

Application Note

*Optimal dilutions/concentrations should be determined by the researcher.

Suggested dilution	Recommended dilution
WB	1:500-1:3000
ICC/IF	1:100-1:1000
IHC-P	1:100-1:1000
IHC-Fr	Assay dependent

Not tested in other applications.

Calculated MW 87 kDa. ([Note](#))

PROPERTIES

Form	Liquid
Buffer	PBS, 10% Glycerol
Preservative	0.01% Thimerosal
Storage	Store as concentrated solution. Centrifuge briefly prior to opening vial. For short-term storage (1-2 weeks), store at 4°C. For long-term storage, aliquot and store at -20°C or below. Avoid multiple freeze-thaw cycles.
Concentration	0.2 mg/ml (Please refer to the vial label for the specific concentration.)
Immunogen	Recombinant protein encompassing a sequence within the C-terminus region of human APP. The exact sequence is proprietary.
Purification	Purified by antigen-affinity chromatography.
Conjugation	Unconjugated



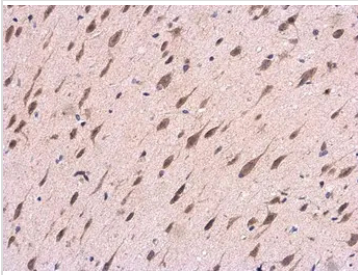
For full product information, images and publications, please visit our [website](#).

For laboratory research use only. Not for any clinical, therapeutic, or diagnostic use in humans or animals. Not for animal or human consumption.

Note

Purchasers shall not, and agree not to enable third parties to, analyze, copy, reverse engineer or otherwise attempt to determine the structure or sequence of the product.

DATA IMAGES



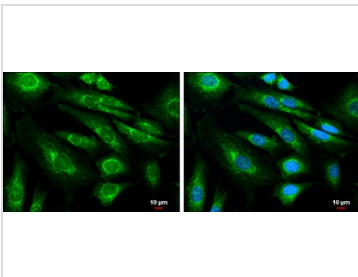
GTx101336 IHC-P Image

APP antibody [C2C3], C-term detects APP protein at cytoplasm in Rat brain by immunohistochemical analysis.

Sample: Paraffin-embedded Rat brain.

APP antibody [C2C3], C-term (GTx101336) diluted at 1:500.

Antigen Retrieval: Citrate buffer, pH 6.0, 15 min



GTx101336 ICC/IF Image

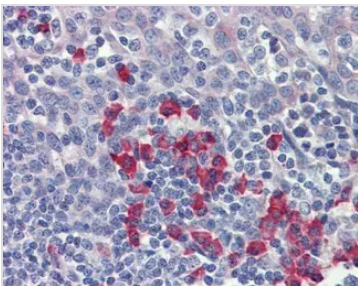
APP antibody [C2C3], C-term detects APP protein at cytoplasm by immunofluorescent analysis.

Sample: SK-N-SH cells were fixed in 4% paraformaldehyde at RT for 15 min.

Green: APP protein stained by APP antibody [C2C3], C-term (GTx101336) diluted at 1:400.

Blue: Hoechst 33342 staining.

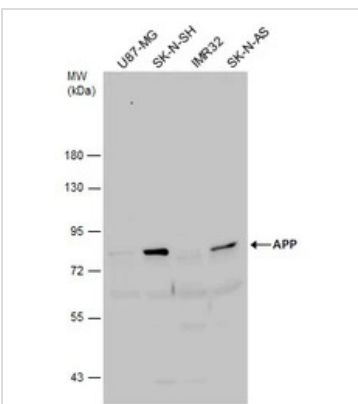
Scale bar = 10 μ m.



GTx101336 IHC-P Image

Immunohistochemical analysis of paraffin-embedded human tonsil, plasma cells, using APP(GTx101336) antibody(10 μ g/ml).

Antigen Retrieval: Trilogy™ (EDTA based, pH 8.0) buffer, 15min



GTx101336 WB Image

Various whole cell extracts (30 μ g) were separated by 7.5% SDS-PAGE, and the membrane was blotted with APP antibody [C2C3], C-term (GTx101336) diluted at 1:500.



For full product information, images and publications, please visit our [website](https://www.genetex.com).