

## BCL6 antibody [N2C1], Internal

Cat. No. GTX101338

Host	Rabbit
Clonality	Polyclonal
Isotype	IgG
Applications	WB, IHC-P, IP, ChIP assay
Reactivity	Human, Mouse, Rat, Dog

References ( 5 )

Package

100 µl, 25 µl

## Applications

## Application Note

\*Optimal dilutions/concentrations should be determined by the researcher.

Suggested dilution	Recommended dilution
WB	1:500-1:3000
IHC-P	1:100-1:1000
IP	1:100-1:500
ChIP assay	Assay dependent

Not tested in other applications.

Calculated MW 79 kDa. ( [Note](#) )

## Properties

Form	Liquid
Buffer	PBS, 20% Glycerol
Preservative	0.025% ProClin 300
Storage	Store as concentrated solution. Centrifuge briefly prior to opening vial. For short-term storage (1-2 weeks), store at 4°C. For long-term storage, aliquot and store at -20°C or below. Avoid multiple freeze-thaw cycles.
Concentration	1.64 mg/ml (Please refer to the vial label for the specific concentration.)
Immunogen	Recombinant protein encompassing a sequence within the center region of human BCL6. The exact sequence is proprietary.
Purification	Purified by antigen-affinity chromatography.
Conjugation	Unconjugated

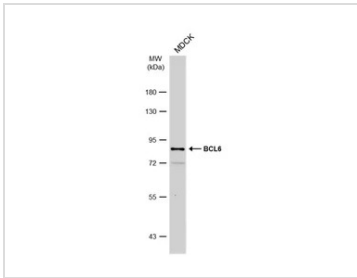
## Note

For laboratory research use only. Not for any clinical, therapeutic, or diagnostic use in humans or animals. Not for animal or human consumption.

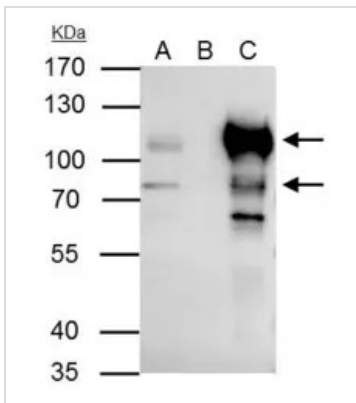
Purchasers shall not, and agree not to enable third parties to, analyze, copy, reverse engineer or otherwise attempt to determine the structure or sequence of the product.



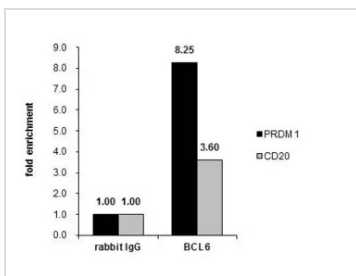
For full product information, images and publications, please visit our [website](#).

**DATA IMAGES**

**GTX101338 WB Image**

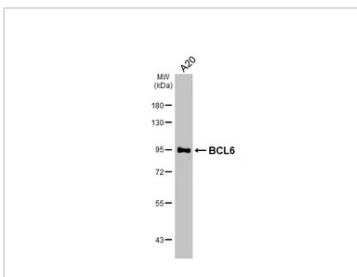
Whole cell extract (30 µg) was separated by 7.5% SDS-PAGE, and the membrane was blotted with BCL6 antibody (GTX101338) diluted at 1:1000. The HRP-conjugated anti-rabbit IgG antibody (GTX213110-01) was used to detect the primary antibody, and the signal was developed with Trident ECL plus-Enhanced.


**GTX101338 IP Image**

BCL6 antibody immunoprecipitates BCL6 protein in IP experiments. IP Sample: Raji whole cell lysate/extract A : 30 µg whole cell lysate/extract of BCL6 protein expressing Raji cells B : Control with 3 µg of pre-immune rabbit IgG C : Immunoprecipitation of BCL6 by 3 µg of BCL6 antibody (GTX101338) 7.5% SDS-PAGE The immunoprecipitated BCL6 protein was detected by BCL6 antibody (GTX101338) diluted at 1 : 1000. EasyBlot anti-rabbit IgG (HRP) (GTX221666-01) was used as a secondary reagent.


**GTX101338 ChIP assay Image**

Cross-linked ChIP was performed with Raji chromatin extract and 5 µg of either control rabbit IgG or anti-BCL6 antibody. The precipitated DNA was detected by PCR with primer set targeting to PRDM1 or CD20. ChIP experiment and primer designs are based on [Blood. 2007 Sep 15;110\(6\):2067-74](https://doi.org/10.1182/blood-2007-09-1106).


**GTX101338 WB Image**

Whole cell extract (30 µg) was separated by 7.5% SDS-PAGE, and the membrane was blotted with BCL6 antibody [N2C1], Internal (GTX101338) diluted at 1:1000. The HRP-conjugated anti-rabbit IgG antibody (GTX213110-01) was used to detect the primary antibody.



For full product information, images and publications, please visit our [website](https://www.genetex.com).