

AXL antibody [C2C3], C-term

Cat. No. GTX101345

Host	Rabbit
Clonality	Polyclonal
Isotype	IgG
Application	WB, IHC-P
Reactivity	Human

Reference (1)
 Package
 100 µl, 25 µl

APPLICATION

Application Note

*Optimal dilutions/concentrations should be determined by the researcher.

Suggested dilution	Recommended dilution
WB	1:500-1:3000
IHC-P	1:100-1:1000

Not tested in other applications.

Calculated MW 98 kDa. ([Note](#))

PROPERTIES

Form	Liquid
Buffer	0.1M Tris, 0.1M Glycine, 10% Glycerol
Preservative	0.01% Thimerosal
Storage	Store as concentrated solution. Centrifuge briefly prior to opening vial. For short-term storage (1-2 weeks), store at 4°C. For long-term storage, aliquot and store at -20°C or below. Avoid multiple freeze-thaw cycles.
Concentration	0.34 mg/ml (Please refer to the vial label for the specific concentration.)
Immunogen	Recombinant protein encompassing a sequence within the Intracellular domain of human AXL. The exact sequence is proprietary.
Purification	Purified by antigen-affinity chromatography.
Conjugation	Unconjugated

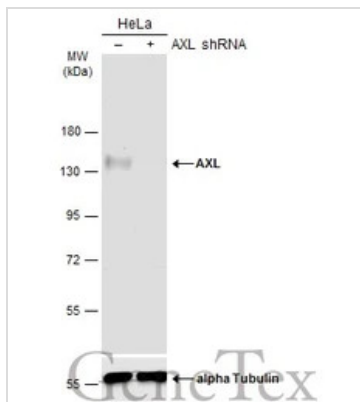
Note

For laboratory research use only. Not for any clinical, therapeutic, or diagnostic use in humans or animals. Not for animal or human consumption.

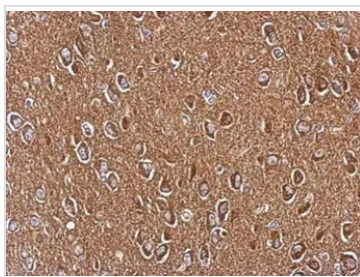
Purchasers shall not, and agree not to enable third parties to, analyze, copy, reverse engineer or otherwise attempt to determine the structure or sequence of the product.



For full product information, images and publications, please visit our [website](#).

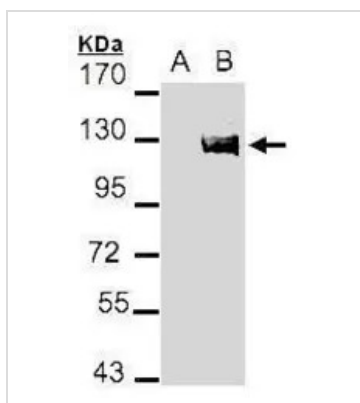
DATA IMAGES

GTXT101345 WB Image

Non-transfected (–) and transfected (+) HeLa whole cell extracts (60 µg) were separated by 7.5% SDS-PAGE, and the membrane was blotted with AXL antibody [C2C3], C-term (GTXT101345) diluted at 1:500. The HRP-conjugated anti-rabbit IgG antibody (GTXT213110-01) was used to detect the primary antibody.


GTXT101345 IHC-P Image

Immunohistochemical analysis of paraffin-embedded CL1-5 xenograft, using AXL(GTXT101345) antibody at 1:200 dilution.

Antigen Retrieval: Trilogy™ (EDTA based, pH 8.0) buffer, 15min


GTXT101345 WB Image

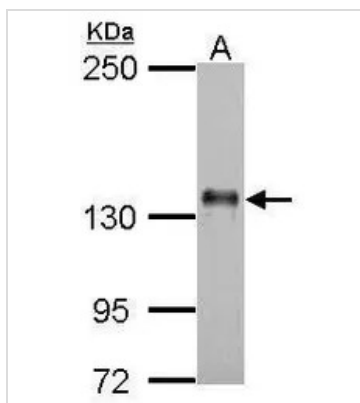
Western Blot analysis of AXL expression in transfected 293T cell line by AXL polyclonal antibody.

A: Non-transfected lysate.

B: AXL transfected lysate.

7.5% SDS PAGE

GTXT101345 diluted at 1:500


GTXT101345 WB Image

Sample (30 ug of whole cell lysate)

A: H1299

5% SDS PAGE

GTXT101345 diluted at 1:500



For full product information, images and publications, please visit our [website](https://www.genetex.com).