

ACE2 antibody [N1N2], N-term

Cat No. GTX101395

Host	Rabbit
Clonality	Polyclonal
Isotype	IgG
Application	WB, ICC/IF, IHC-P, FACS, ELISA
Reactivity	Human, Mouse, Rat, African green monkey

Reference (12)

★★★★★ Review (3)

Package

100 µl, 25 µl

APPLICATION

Application Note

*Optimal dilutions/concentrations should be determined by the researcher.

Suggested dilution	Dilution
WB	1:500-1:3000
ICC/IF	Assay dependent
IHC-P	1:100-1:1000
FACS	Assay dependent
ELISA	Assay dependent

Not tested in other applications.

Calculated MW 92 kDa. ([Note](#))

PROPERTIES

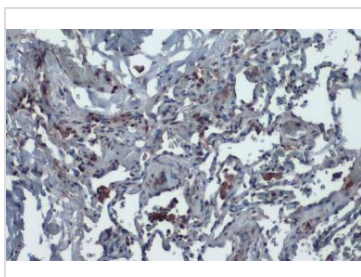
Form	Liquid
Buffer	1XPBS (pH7), 1% BSA, 20% Glycerol
Preservative	0.025% ProClin 300
Storage	Store as concentrated solution. Centrifuge briefly prior to opening vial. For short-term storage (1-2 weeks), store at 4°C. For long-term storage, aliquot and store at -20°C or below. Avoid multiple freeze-thaw cycles.
Concentration	0.2 mg/ml (Please refer to the vial label for the specific concentration.)
Immunogen	Recombinant protein encompassing a sequence within the N-terminus region of human ACE2. The exact sequence is proprietary.
Purification	Purified by antigen-affinity chromatography.
Conjugation	Unconjugated
Note	For laboratory use only. Not for any clinical, therapeutic, or diagnostic use in humans or animals. Not for animal or human consumption.



For full product information, images and publications, please visit our [website](#).

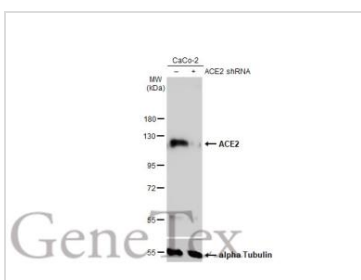
Date 2022 / 01 / 17 Page 1 of 2

DATA IMAGES



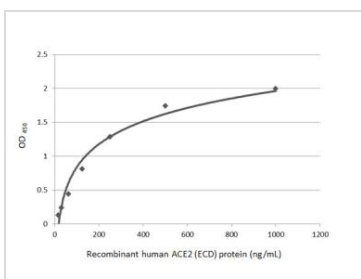
GTX101395 IHC-P Image

ACE2 antibody [N1N2], N-term detects ACE2 protein at cytoplasm by immunohistochemical analysis.
 Sample: Paraffin-embedded human lung.
 ACE2 stained by ACE2 antibody [N1N2], N-term (GTX101395) diluted at 1:2000.
 Antigen Retrieval: Citrate buffer, pH 6.0, 15 min



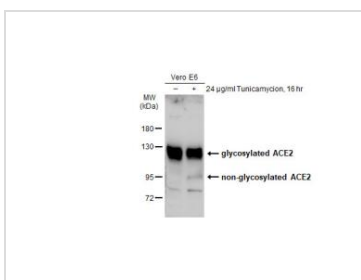
GTX101395 WB Image

Non-transfected (-) and transfected (+) Caco-2 whole cell extracts (30 µg) were separated by 7.5% SDS-PAGE, and the membrane was blotted with ACE2 antibody [N1N2], N-term (GTX101395) diluted at 1:500. The HRP-conjugated anti-rabbit IgG antibody (GTX213110-01) was used to detect the primary antibody.



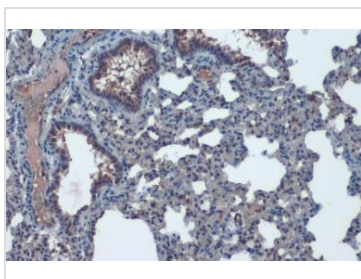
GTX101395 ELISA Image

Indirect ELISA analysis performed by coating plate with recombinant Human ACE2 (ECD) protein, mouse IgG Fc tag protein (GTX135683-pro) (15.63-1000 ng/mL). Coated protein probed with ACE2 antibody [N1N2], N-term (GTX101395) (0.1 µg/mL). Rabbit IgG antibody (HRP) (GTX213110-01) (1:10000) detected bound primary antibody.



GTX101395 WB Image

Untreated (-) and treated (+) Vero E6 whole cell extracts (30 µg) were separated by 7.5% SDS-PAGE, and the membrane was blotted with ACE2 antibody [N1N2], N-term (GTX101395) diluted at 1:500. The HRP-conjugated anti-rabbit IgG antibody (GTX213110-01) was used to detect the primary antibody.



GTX101395 IHC-P Image

ACE2 antibody [N1N2], N-term detects ACE2 protein at cytoplasm by immunohistochemical analysis.
 Sample: Paraffin-embedded rat lung.
 ACE2 stained by ACE2 antibody [N1N2], N-term (GTX101395) diluted at 1:2000.
 Antigen Retrieval: Citrate buffer, pH 6.0, 15 min



For full product information, images and publications, please visit our [website](#).