

## SIRT4 antibody

Cat. No. GTX10140

|              |            |
|--------------|------------|
| Host         | Goat       |
| Clonality    | Polyclonal |
| Isotype      | IgG        |
| Applications | WB, IHC-P  |
| Reactivity   | Human      |

Package

50 µg

## Applications

## Application Note

\*Optimal dilutions/concentrations should be determined by the researcher.

| Suggested dilution | Recommended dilution |
|--------------------|----------------------|
| WB                 | 1-3µg/ml             |
| IHC-P              | 2-3µg/ml             |

**Note : Skeletal Muscle shows spotty staining of striated fibres in longitudinal section.**

Not tested in other applications.

**Calculated MW** 35 kDa. ( [Note](#) )

## Properties

|               |                                                                                                                                                                                                                            |
|---------------|----------------------------------------------------------------------------------------------------------------------------------------------------------------------------------------------------------------------------|
| Form          | Liquid                                                                                                                                                                                                                     |
| Buffer        | TBS, 0.5% BSA                                                                                                                                                                                                              |
| Preservative  | 0.02% Sodium azide                                                                                                                                                                                                         |
| Storage       | Store as concentrated solution. Centrifuge briefly prior to opening vial. For short-term storage (1-2 weeks), store at 4°C. For long-term storage, aliquot and store at -20°C or below. Avoid multiple freeze-thaw cycles. |
| Concentration | 0.50 mg/ml (Please refer to the vial label for the specific concentration.)                                                                                                                                                |
| Immunogen     | Peptide with sequence SRCGELLPLIDPC, from the C Terminus of the protein sequence according to NP_036372.1.                                                                                                                 |
| Purification  | Purified by ammonium sulphate precipitation followed by antigen affinity chromatography                                                                                                                                    |
| Conjugation   | Unconjugated                                                                                                                                                                                                               |

## Note

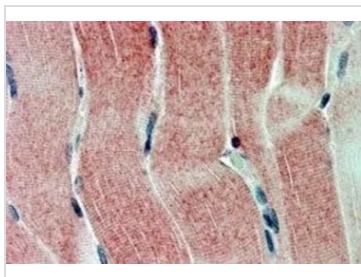
For laboratory research use only. Not for any clinical, therapeutic, or diagnostic use in humans or animals. Not for animal or human consumption.

Purchasers shall not, and agree not to enable third parties to, analyze, copy, reverse engineer or otherwise attempt to determine the structure or sequence of the product.



For full product information, images and publications, please visit our [website](#).

## DATA IMAGES

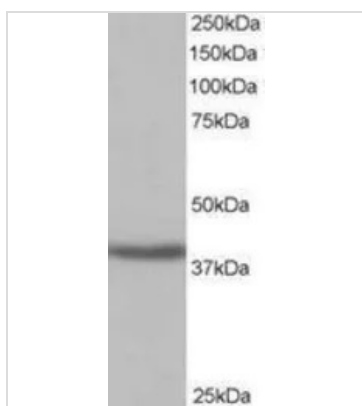


### GTX10140 IHC-P Image

IHC-P analysis of human skeletal muscle using GTX10140 SIRT4 antibody.

Antigen retrieval : citrate buffer pH 6

Dilution : 2.5µg/ml



### GTX10140 WB Image

WB analysis of human kidney lysate using GTX10140 SIRT4 antibody.

Dilution : 1µg/ml

Loading : 35µg protein in RIPA buffer



For full product information, images and publications, please visit our [website](#).