

LDHA antibody

Cat. No. GTX101416

Host	Rabbit
Clonality	Polyclonal
Isotype	IgG
Applications	WB, ICC/IF, IHC-P
Reactivity	Human, Mouse, Rat

References (20)

★★★★★ Review (1)

Package

100 µl, 25 µl

PRODUCT

Summary

LDHA facilitates glycolytic flux by converting pyruvate to lactate and NADH to NAD⁺. It is primarily cytoplasmic, but is also found in mitochondria and the nucleus. In addition to its metabolic function, LDHA is also a single-stranded DNA-binding protein participating in DNA duplication and transcription. Elevated expression of LDHA is observed in various cancers.

Applications

Application Note

*Optimal dilutions/concentrations should be determined by the researcher.

Suggested dilution	Recommended dilution
WB	1:500-1:3000
ICC/IF	1:100-1:1000
IHC-P	1:100-1:1000

Not tested in other applications.

Calculated MW 37 kDa. ([Note](#))

Properties

Form	Liquid
Buffer	PBS, 1% BSA, 20% Glycerol
Preservative	0.025% ProClin 300
Storage	Store as concentrated solution. Centrifuge briefly prior to opening vial. For short-term storage (1-2 weeks), store at 4°C. For long-term storage, aliquot and store at -20°C or below. Avoid multiple freeze-thaw cycles.
Concentration	0.37 mg/ml (Please refer to the vial label for the specific concentration.)
Immunogen	Recombinant protein encompassing a sequence within the center region of human LDHA. The exact sequence is proprietary.
Purification	Purified by antigen-affinity chromatography.
Conjugation	Unconjugated



For full product information, images and publications, please visit our [website](#).

For laboratory research use only. Not for any clinical, therapeutic, or diagnostic use in humans or animals. Not for animal or human consumption.

Note

Purchasers shall not, and agree not to enable third parties to, analyze, copy, reverse engineer or otherwise attempt to determine the structure or sequence of the product.

DATA IMAGES

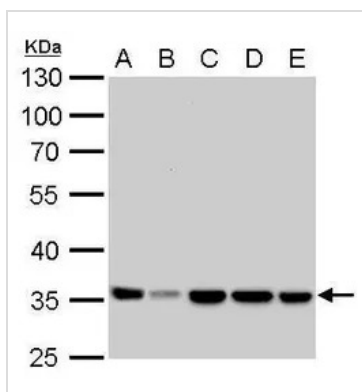
**GTX101416 IHC-P Image**

LDHA antibody detects LDHA protein at cytoplasm by immunohistochemical analysis.

Sample: Paraffin-embedded mouse liver.

LDHA stained by LDHA antibody (GTX101416) diluted at 1:500.

Antigen Retrieval: Citrate buffer, pH 6.0, 15 min

**GTX101416 WB Image**

LDHA antibody detects LDHA protein by western blot analysis.

A. 30 µg Neuro2A whole cell lysate/extract

B. 30 µg C8D30 whole cell lysate/extract

C. 30 µg NIH-3T3 whole cell lysate/extract

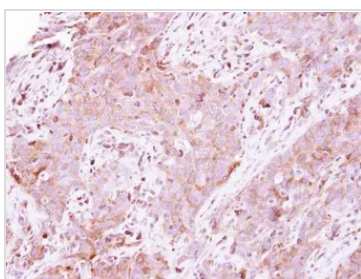
D. 30 µg Raw264.7 whole cell lysate/extract

E. 30 µg C2C12 whole cell lysate/extract

10% SDS-PAGE

LDHA antibody (GTX101416) dilution: 1:1000

The HRP-conjugated anti-rabbit IgG antibody (GTX213110-01) was used to detect the primary antibody.

**GTX101416 IHC-P Image**

Immunohistochemical analysis of paraffin-embedded human lung papillary adenocarcinoma, using LDHA(GTX101416) antibody at 1:500 dilution.

Antigen Retrieval: Trilogy™ (EDTA based, pH 8.0) buffer, 15min



For full product information, images and publications, please visit our [website](#).