

ALDH2 antibody

Cat. No. GTX101429

| | |
|-------------|---|
| Host | Rabbit |
| Clonality | Polyclonal |
| Isotype | IgG |
| Application | WB, IHC-P, IHC-Wm, ELISA, IHC, Sandwich ELISA |
| Reactivity | Human, Mouse, Zebrafish |

Reference (7)

★★★★★ Review (1)

Package

100 µl, 25 µl

APPLICATION

Application Note

*Optimal dilutions/concentrations should be determined by the researcher.

| Suggested dilution | Recommended dilution |
|--------------------|----------------------|
| WB | 1:500-1:3000 |
| IHC-P | 1:100-1:1000 |
| IHC-Wm | Assay dependent |
| ELISA | 1:1000-1:10000 |
| IHC | Assay dependent |
| Sandwich ELISA | Assay dependent |

Note : Capture: GTX101429 , Detection: GTX88073

Not tested in other applications.

Calculated MW 56 kDa. ([Note](#))

PROPERTIES

| | |
|---------------|--|
| Form | Liquid |
| Buffer | PBS, 1% BSA, 20% Glycerol |
| Preservative | 0.025% ProClin 300 |
| Storage | Store as concentrated solution. Centrifuge briefly prior to opening vial. For short-term storage (1-2 weeks), store at 4°C. For long-term storage, aliquot and store at -20°C or below. Avoid multiple freeze-thaw cycles. |
| Concentration | 0.23 mg/ml (Please refer to the vial label for the specific concentration.) |
| Immunogen | Recombinant protein encompassing a sequence within the center region of human ALDH2. The exact sequence is proprietary. |
| Purification | Purified by antigen-affinity chromatography. |
| Conjugation | Unconjugated |

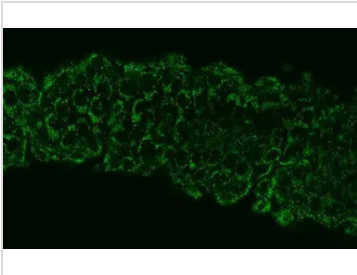
For full product information, images and publications, please visit our [website](#).

For laboratory research use only. Not for any clinical, therapeutic, or diagnostic use in humans or animals. Not for animal or human consumption.

Note

Purchasers shall not, and agree not to enable third parties to, analyze, copy, reverse engineer or otherwise attempt to determine the structure or sequence of the product.

DATA IMAGES

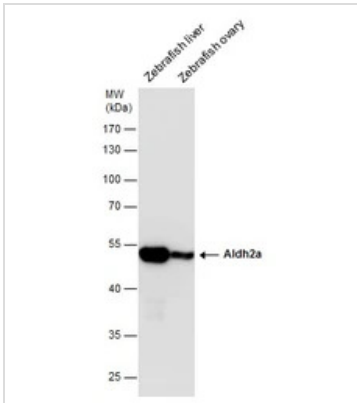


GTx101429 IHC-Wm Image

ALDH2 antibody detects ALDH2 protein at mitochondria on whole-mount zebrafish embryos by immunohistochemical analysis.

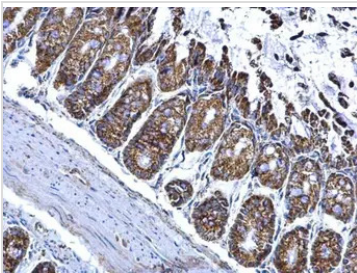
Sample: Paraformaldehyde-fixed zebrafish embryos.

ALDH2 antibody (GTx101429) dilution: 1:200.



GTx101429 WB Image

ALDH2 antibody detects ALDH2 protein by Western blot analysis. Zebrafish tissue extracts (30 µg) was separated by 10 % SDS-PAGE, and the membrane was blotted with ALDH2 antibody (GTx101429) at a dilution of 1:2000.



GTx101429 IHC-P Image

ALDH2 antibody detects ALDH2 protein at mitochondria on mouse colon by immunohistochemical analysis.

Sample: Paraffin-embedded mouse colon.

ALDH2 antibody (GTx101429) dilution: 1:500.

Antigen Retrieval: Trilogy™ (EDTA based, pH 8.0) buffer, 15min



For full product information, images and publications, please visit our [website](https://www.genetex.com).