

ALDH2 antibody

Cat. No. GTX101429

Host	Rabbit
Clonality	Polyclonal
Isotype	IgG
Applications	WB, IHC-P, IHC-Wm, ELISA, IHC, Sandwich ELISA
Reactivity	Human, Mouse, Zebrafish

References (10)

★★★★★ Review (1)

Package

100 µl, 25 µl

Applications

Application Note

*Optimal dilutions/concentrations should be determined by the researcher.

Suggested dilution	Recommended dilution
WB	1:500-1:3000
IHC-P	1:100-1:1000
IHC-Wm	Assay dependent
ELISA	1:1000-1:10000
IHC	Assay dependent
Sandwich ELISA	Assay dependent

Note : Capture: GTX101429 , Detection: GTX88073

Not tested in other applications.

Calculated MW 56 kDa. ([Note](#))**Product Note** KO/KD validation is based on customer review data.

Properties

Form	Liquid
Buffer	PBS, 1% BSA, 20% Glycerol
Preservative	0.025% ProClin 300
Storage	Store as concentrated solution. Centrifuge briefly prior to opening vial. For short-term storage (1-2 weeks), store at 4°C. For long-term storage, aliquot and store at -20°C or below. Avoid multiple freeze-thaw cycles.
Concentration	0.23 mg/ml (Please refer to the vial label for the specific concentration.)
Immunogen	Recombinant protein encompassing a sequence within the center region of human ALDH2. The exact sequence is proprietary.
Purification	Purified by antigen-affinity chromatography.



For full product information, images and publications, please visit our [website](#).

Conjugation

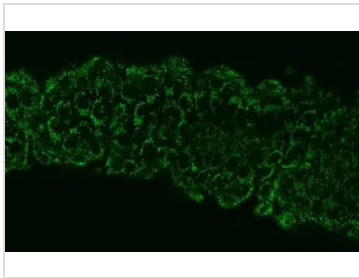
Unconjugated

Note

For laboratory research use only. Not for any clinical, therapeutic, or diagnostic use in humans or animals. Not for animal or human consumption.

Purchasers shall not, and agree not to enable third parties to, analyze, copy, reverse engineer or otherwise attempt to determine the structure or sequence of the product.

DATA IMAGES

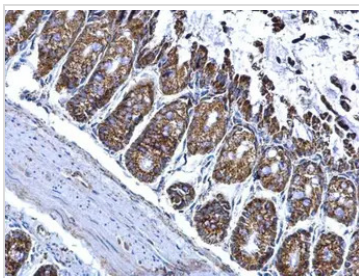


GTx101429 IHC-Wm Image

ALDH2 antibody detects ALDH2 protein at mitochondria on whole-mount zebrafish embryos by immunohistochemical analysis.

Sample: Paraformaldehyde-fixed zebrafish embryos.

ALDH2 antibody (GTx101429) dilution: 1:200.



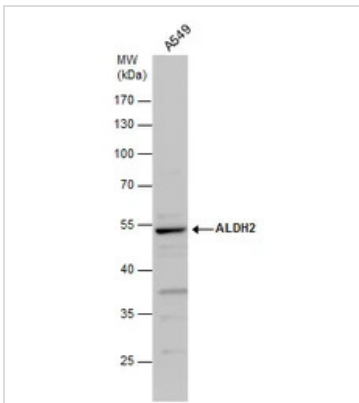
GTx101429 IHC-P Image

ALDH2 antibody detects ALDH2 protein at mitochondria on mouse colon by immunohistochemical analysis.

Sample: Paraffin-embedded mouse colon.

ALDH2 antibody (GTx101429) dilution: 1:500.

Antigen Retrieval: Trilogy™ (EDTA based, pH 8.0) buffer, 15min



GTx101429 WB Image

ALDH2 antibody detects ALDH2 protein by Western blot analysis. Whole cell extracts (30 µg) was separated by 10% SDS-PAGE, and the membrane was blotted with ALDH2 antibody (GTx101429) at a dilution of 1:500.



For full product information, images and publications, please visit our [website](https://www.genetex.com).