

beta Catenin antibody [N1N2-2], N-term

Cat. No. GTX101435

Host	Rabbit
Clonality	Polyclonal
Isotype	IgG
Applications	WB, ICC/IF, IHC-P, IHC-Fr, IHC-Wm, FCM, IP, ChIP assay, IHC
Reactivity	Human, Mouse, Rat, Zebrafish, Rabbit, Cat, Dog

References (63)

★★★★★ Review (7)

Package

100 µl, 25 µl

PRODUCT

Summary

Beta-catenin antibody recognizes beta-catenin protein, which acts as a cell adhesion factor as well as an effector of Wnt signaling pathway-driven transcription. Mutation or dysregulation of beta-catenin is associated with many diseases, including developmental disorders and cancers. There are a plethora of commercially available beta-catenin antibodies, among which GeneTex's beta-catenin antibody (GTX101435) is one of the most rigorously validated and widely cited for a number of applications.

Applications

Application Note

*Optimal dilutions/concentrations should be determined by the researcher.

Suggested dilution	Recommended dilution
WB	1:500-1:20000
ICC/IF	1:100-1:1000
IHC-P	1:100-1:1000
IHC-Fr	Assay dependent
IHC-Wm	Assay dependent
FCM	1:50-1:200
IP	1:50-1:100
ChIP assay	Assay dependent
IHC	Assay dependent

Not tested in other applications.

Calculated MW 85 kDa. ([Note](#))

Properties

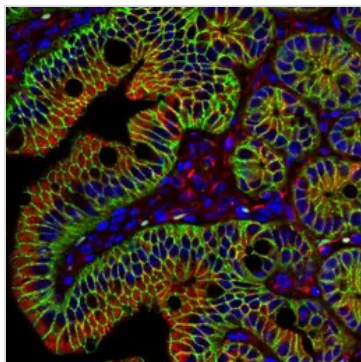
Form	Liquid
Buffer	PBS, 1% BSA, 20% Glycerol
Preservative	0.025% ProClin 300



For full product information, images and publications, please visit our [website](#).

Date 2025 / 04 / 27 Page 1 of 2

Storage	Store as concentrated solution. Centrifuge briefly prior to opening vial. For short-term storage (1-2 weeks), store at 4°C. For long-term storage, aliquot and store at -20°C or below. Avoid multiple freeze-thaw cycles.
Concentration	0.13 mg/ml (Please refer to the vial label for the specific concentration.)
Immunogen	Recombinant protein encompassing a sequence within the N-terminus region of human beta Catenin. The exact sequence is proprietary.
Purification	Purified by antigen-affinity chromatography.
Conjugation	Unconjugated
Note	For laboratory research use only. Not for any clinical, therapeutic, or diagnostic use in humans or animals. Not for animal or human consumption. Purchasers shall not, and agree not to enable third parties to, analyze, copy, reverse engineer or otherwise attempt to determine the structure or sequence of the product.

DATA IMAGES

GTX101435 IHC-P Image

beta Catenin antibody [N1N2-2] detects beta Catenin protein at cell membrane in mouse colon by immunohistochemical analysis.

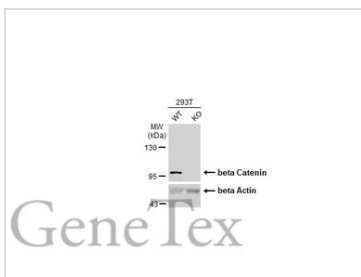
Sample: Paraffin-embedded mouse colon.

Green: beta Catenin antibody [N1N2-2] (GTX101435) diluted at 1:500.

Red: alpha Tubulin antibody [GT114] (GTX628802) diluted at 1:500.

Blue: Hoechst 33342 staining.

Antigen Retrieval: Citrate buffer, pH 6.0, 15 min


GTX101435 WB Image

Wild-type (WT) and beta Catenin knockout (KO) 293T cell extracts (9 µg) were separated by 7.5% SDS-PAGE, and the membrane was blotted with beta Catenin antibody [N1N2-2], N-term (GTX101435) diluted at 1:1000. The HRP-conjugated anti-rabbit IgG antibody (GTX213110-01) was used to detect the primary antibody.



For full product information, images and publications, please visit our [website](https://www.genetex.com).