

# Hsp90 beta antibody

**Cat. No. GTX101448**

<b>Host</b>	Rabbit
<b>Clonality</b>	Polyclonal
<b>Isotype</b>	IgG
<b>Application</b>	WB, ICC/IF, IHC-P, IHC-Wm, IP, ELISA-Ag
<b>Reactivity</b>	Human, Mouse, Rat, Zebrafish

Reference ( 16 )

★★★★★ Review ( 5 )

Package  
100 µl, 25 µl

## APPLICATION

### Application Note

\*Optimal dilutions/concentrations should be determined by the researcher.

Suggested dilution	Recommended dilution
WB	1:500-1:3000
ICC/IF	1:100-1:1000
IHC-P	1:100-1:1000
IHC-Wm	Assay dependent
IP	Assay dependent
ELISA-Ag	Assay dependent

Not tested in other applications.

**Calculated MW** 83 kDa. ( [Note](#) )

## PROPERTIES

<b>Form</b>	Liquid
<b>Buffer</b>	0.1M Tris, 0.1M Glycine, 10% Glycerol
<b>Preservative</b>	0.01% Thimerosal
<b>Storage</b>	Store as concentrated solution. Centrifuge briefly prior to opening vial. For short-term storage (1-2 weeks), store at 4°C. For long-term storage, aliquot and store at -20°C or below. Avoid multiple freeze-thaw cycles.
<b>Concentration</b>	0.5 mg/ml (Please refer to the vial label for the specific concentration.)
<b>Immunogen</b>	Recombinant protein encompassing a sequence within the N-terminus region of human HSP90 beta. The exact sequence is proprietary.
<b>Purification</b>	Purified by antigen-affinity chromatography.
<b>Conjugation</b>	Unconjugated

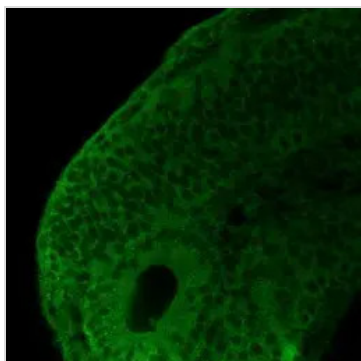


For full product information, images and publications, please visit our [website](#).

For laboratory research use only. Not for any clinical, therapeutic, or diagnostic use in humans or animals. Not for animal or human consumption.

**Note**

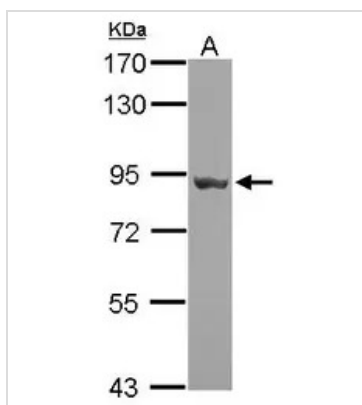
Purchasers shall not, and agree not to enable third parties to, analyze, copy, reverse engineer or otherwise attempt to determine the structure or sequence of the product.

**DATA IMAGES**

**GTx101448 IHC-Wm Image**

Hsp90 beta antibody detects Hsp90 beta protein on whole-mount zebrafish embryos by immunohistochemical analysis.

Sample: Paraformaldehyde-fixed zebrafish embryos.

Hsp90 beta antibody (GTx101448) dilution: 1:200.

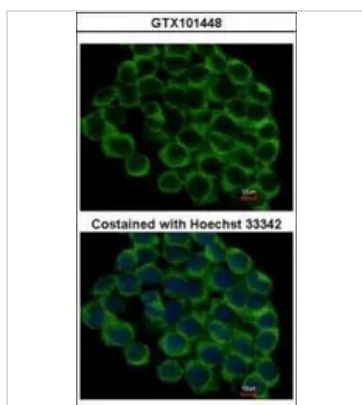

**GTx101448 WB Image**

Sample (30 µg of whole cell lysate)

A: zebrafish eye

7.5% SDS PAGE

GTx101448 diluted at 1:10000


**GTx101448 ICC/IF Image**

Immunofluorescence analysis of methanol-fixed HCT116, using HSP90 beta(GTx101448) antibody at 1:500 dilution.



For full product information, images and publications, please visit our [website](https://www.genetex.com).