

Hsp90 beta antibody

Cat. No. GTX101448

Host	Rabbit
Clonality	Polyclonal
Isotype	IgG
Applications	WB, ICC/IF, IHC-P, IHC-Wm, IP, ELISA-Ag
Reactivity	Human, Mouse, Rat, Zebrafish

References (19)

★★★★☆ Review (6)

Package

100 µl, 25 µl

Applications

Application Note

*Optimal dilutions/concentrations should be determined by the researcher.

Suggested dilution	Recommended dilution
WB	1:500-1:3000
ICC/IF	1:100-1:1000
IHC-P	1:100-1:1000
IHC-Wm	Assay dependent
IP	Assay dependent
ELISA-Ag	Assay dependent

Not tested in other applications.

Calculated MW 83 kDa. ([Note](#))**Product Note** KO/KD validation is based on published data (PMID: 36305789).

Properties

Form	Liquid
Buffer	0.1M Tris, 0.1M Glycine, 10% Glycerol
Preservative	0.01% Thimerosal
Storage	Store as concentrated solution. Centrifuge briefly prior to opening vial. For short-term storage (1-2 weeks), store at 4°C. For long-term storage, aliquot and store at -20°C or below. Avoid multiple freeze-thaw cycles.
Concentration	0.5 mg/ml (Please refer to the vial label for the specific concentration.)
Immunogen	Recombinant protein encompassing a sequence within the N-terminus region of human HSP90 beta. The exact sequence is proprietary.
Purification	Purified by antigen-affinity chromatography.

For full product information, images and publications, please visit our [website](#).

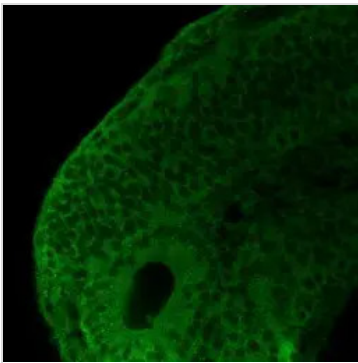
Date 2026 / 06 / 08 Page 1 of 2

Conjugation Unconjugated

For laboratory research use only. Not for any clinical, therapeutic, or diagnostic use in humans or animals. Not for animal or human consumption.

Note Purchasers shall not, and agree not to enable third parties to, analyze, copy, reverse engineer or otherwise attempt to determine the structure or sequence of the product.

DATA IMAGES

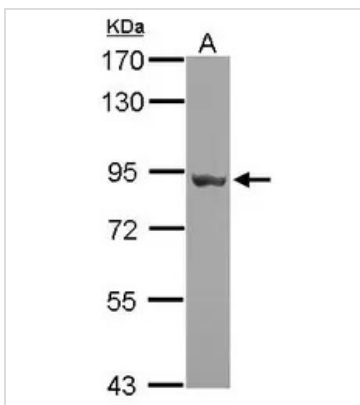


GTX101448 IHC-Wm Image

Hsp90 beta antibody detects Hsp90 beta protein on whole-mount zebrafish embryos by immunohistochemical analysis.

Sample: Paraformaldehyde-fixed zebrafish embryos.

Hsp90 beta antibody (GTX101448) dilution: 1:200.



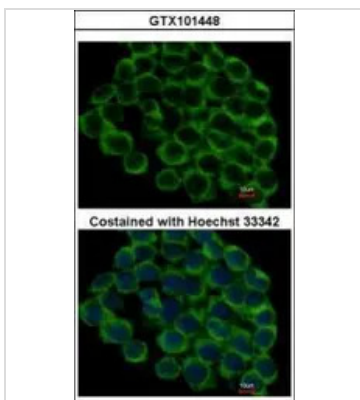
GTX101448 WB Image

Sample (30 µg of whole cell lysate)

A: zebrafish eye

7.5% SDS PAGE

GTX101448 diluted at 1:10000



GTX101448 ICC/IF Image

Immunofluorescence analysis of methanol-fixed HCT116, using HSP90 beta(GTX101448) antibody at 1:500 dilution.



For full product information, images and publications, please visit our [website](#).