

## Apolipoprotein E antibody

Cat. No. GTX101456

Host	Rabbit
Clonality	Polyclonal
Isotype	IgG
Applications	WB, ICC/IF, IHC-P
Reactivity	Human

Package  
100 µl, 25 µl

## Applications

## Application Note

\*Optimal dilutions/concentrations should be determined by the researcher.

Suggested dilution	Recommended dilution
WB	1:500-1:3000
ICC/IF	1:100-1:1000
IHC-P	1:100-1:1000

Not tested in other applications.

Calculated MW 36 kDa. ( [Note](#) )

## Properties

Form	Liquid
Buffer	PBS, 1% BSA, 20% Glycerol
Preservative	0.01% Thimerosal
Storage	Store as concentrated solution. Centrifuge briefly prior to opening vial. For short-term storage (1-2 weeks), store at 4°C. For long-term storage, aliquot and store at -20°C or below. Avoid multiple freeze-thaw cycles.
Concentration	1 mg/ml (Please refer to the vial label for the specific concentration.)
Immunogen	Recombinant protein encompassing a sequence within the N-terminus region of human Apolipoprotein E. The exact sequence is proprietary.
Purification	Purified by antigen-affinity chromatography.
Conjugation	Unconjugated

## Note

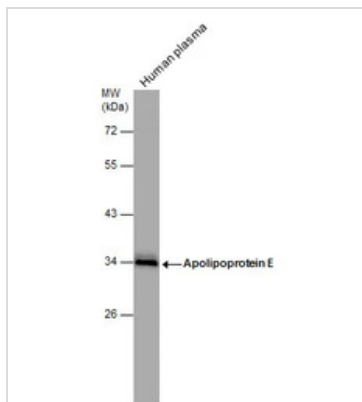
For laboratory research use only. Not for any clinical, therapeutic, or diagnostic use in humans or animals. Not for animal or human consumption.

Purchasers shall not, and agree not to enable third parties to, analyze, copy, reverse engineer or otherwise attempt to determine the structure or sequence of the product.

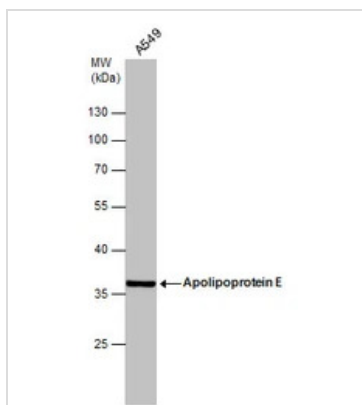


For full product information, images and publications, please visit our [website](#).

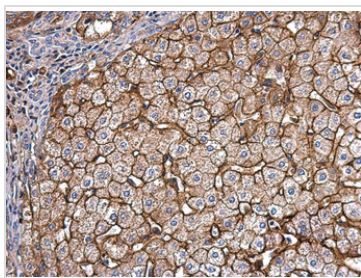
Date 2026 / 01 / 10 Page 1 of 2

**DATA IMAGES**

**GTX101456 WB Image**

Human tissue extract (30 µg) was separated by 10% SDS-PAGE, and the membrane was blotted with Apolipoprotein E antibody (GTX101456) diluted at 1:1000.


**GTX101456 WB Image**

Whole cell extract (30 µg) was separated by 10% SDS-PAGE, and the membrane was blotted with Apolipoprotein E antibody (GTX101456) diluted at 1:1000.

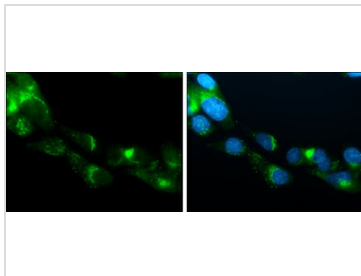

**GTX101456 IHC-P Image**

Apolipoprotein E antibody detects Apolipoprotein E protein at secreted on human hepatoma by immunohistochemical analysis.

Sample: Paraffin-embedded human hepatoma.

Apolipoprotein E antibody (GTX101456) dilution: 1:500.

Antigen Retrieval: Trilogy™ (EDTA based, pH 8.0) buffer, 15min


**GTX101456 ICC/IF Image**

Apolipoprotein E antibody detects Apolipoprotein E protein at cytoplasm by immunofluorescent analysis.

Sample: HepG2 cells were fixed in 4% paraformaldehyde at RT for 15 min.

Green: Apolipoprotein E protein stained by Apolipoprotein E antibody (GTX101456) diluted at 1:500.

Blue: Hoechst 33342 staining.



For full product information, images and publications, please visit our [website](https://www.genetex.com).