

## COX5A antibody [N1C3]

Cat. No. GTX101487

Host	Rabbit
Clonality	Polyclonal
Isotype	IgG
Application	WB, ICC/IF, IHC-P
Reactivity	Human, Mouse, Zebrafish

Package  
100 µl, 25 µl

## APPLICATION

## Application Note

\*Optimal dilutions/concentrations should be determined by the researcher.

Suggested dilution	Recommended dilution
WB	1:1000-1:10000
ICC/IF	1:100-1:1000
IHC-P	1:100-1:1000

Not tested in other applications.

Calculated MW 17 kDa. ( [Note](#) )

## PROPERTIES

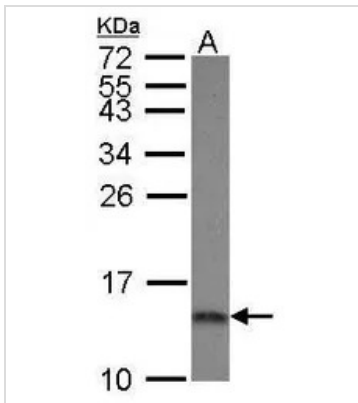
Form	Liquid
Buffer	0.1M Tris, 0.1M Glycine, 10% Glycerol
Preservative	0.01% Thimerosal
Storage	Store as concentrated solution. Centrifuge briefly prior to opening vial. For short-term storage (1-2 weeks), store at 4°C. For long-term storage, aliquot and store at -20°C or below. Avoid multiple freeze-thaw cycles.
Concentration	1 mg/ml (Please refer to the vial label for the specific concentration.)
Immunogen	Recombinant protein encompassing a sequence within the center region of human COX5A. The exact sequence is proprietary.
Purification	Purified by antigen-affinity chromatography.
Conjugation	Unconjugated

**Note** For laboratory research use only. Not for any clinical, therapeutic, or diagnostic use in humans or animals. Not for animal or human consumption.

Purchasers shall not, and agree not to enable third parties to, analyze, copy, reverse engineer or otherwise attempt to determine the structure or sequence of the product.



For full product information, images and publications, please visit our [website](#).

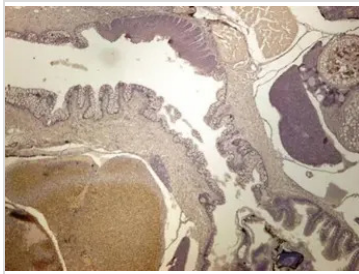
**DATA IMAGES**

**GTx101487 WB Image**

Sample (30 µg of whole cell lysate)

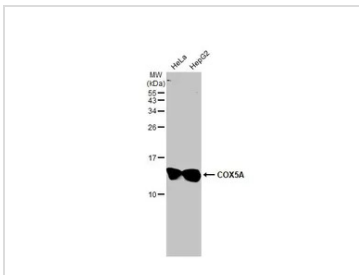
A: zebrafish eye

15% SDS PAGE

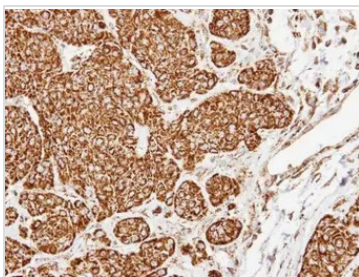
GTx101487 diluted at 1:1000


**GTx101487 IHC-P Image**

Immunohistochemical analysis of paraffin-embedded zebrafish tissue, using COX5A antibody [N1C3] (GTx101487) at 1:300 dilution.


**GTx101487 WB Image**

Various whole cell extracts (30 µg) were separated by 15% SDS-PAGE, and the membrane was blotted with COX5A antibody [N1C3] (GTx101487) diluted at 1:5000. The HRP-conjugated anti-rabbit IgG antibody (GTx213110-01) was used to detect the primary antibody, and the signal was developed with Trident ECL plus-Enhanced.


**GTx101487 IHC-P Image**

Immunohistochemical analysis of paraffin-embedded Cal27 xenograft, using COX5A(GTx101487) antibody at 1:500 dilution.

Antigen Retrieval: Citrate buffer, pH 6.0, 15 min



For full product information, images and publications, please visit our [website](https://www.genetex.com).