

## PABPN1 antibody

Cat. No. GTX101490

|                     |                           |
|---------------------|---------------------------|
| <b>Host</b>         | Rabbit                    |
| <b>Clonality</b>    | Polyclonal                |
| <b>Isotype</b>      | IgG                       |
| <b>Applications</b> | WB, ICC/IF, IHC-P, IHC-Fr |
| <b>Reactivity</b>   | Human, Mouse              |

References ( 1 )

Package

100 µl, 25 µl

## Applications

## Application Note

\*Optimal dilutions/concentrations should be determined by the researcher.

| Suggested dilution | Recommended dilution |
|--------------------|----------------------|
| WB                 | 1:500-1:3000         |
| ICC/IF             | 1:100-1:1000         |
| IHC-P              | 1:100-1:1000         |
| IHC-Fr             | Assay dependent      |

Not tested in other applications.

Calculated MW 33 kDa. ( [Note](#) )

## Properties

|                      |  |
|----------------------|--|
| <b>Form</b>          | Liquid   |
| <b>Buffer</b>        | PBS, 1% BSA, 20% Glycerol  |
| <b>Preservative</b>  | 0.01% Thimerosal   |
| <b>Storage</b>       | Store as concentrated solution. Centrifuge briefly prior to opening vial. For short-term storage (1-2 weeks), store at 4°C. For long-term storage, aliquot and store at -20°C or below. Avoid multiple freeze-thaw cycles. |
| <b>Concentration</b> | 0.49 mg/ml (Please refer to the vial label for the specific concentration.)  |
| <b>Immunogen</b>     | Recombinant protein encompassing a sequence within the center region of human PABPN1. The exact sequence is proprietary.   |
| <b>Purification</b>  | Purified by antigen-affinity chromatography.   |
| <b>Conjugation</b>   | Unconjugated   |



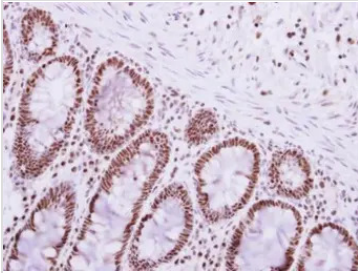
For full product information, images and publications, please visit our [website](#).

For laboratory research use only. Not for any clinical, therapeutic, or diagnostic use in humans or animals. Not for animal or human consumption.

## Note

Purchasers shall not, and agree not to enable third parties to, analyze, copy, reverse engineer or otherwise attempt to determine the structure or sequence of the product.

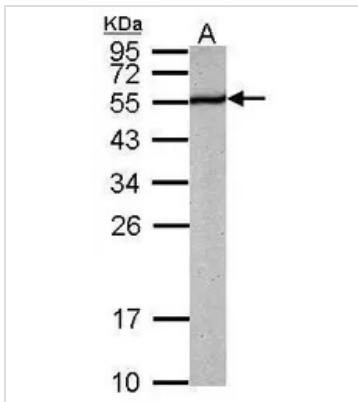
## DATA IMAGES



### GTx101490 IHC-P Image

Immunohistochemical analysis of paraffin-embedded human colon carcinoma, using PABPN1 (GTx101490) antibody at 1:250 dilution.

Antigen Retrieval: Trilogy™ (EDTA based, pH 8.0) buffer, 15min



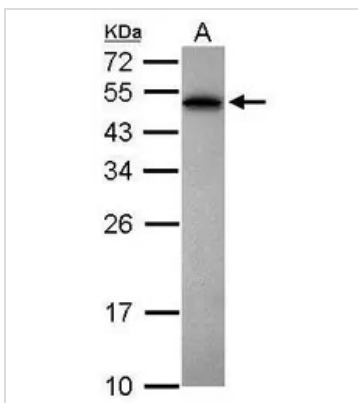
### GTx101490 WB Image

Sample (50 ug of whole cell lysate)

A: mouse brain

12% SDS PAGE

GTx101490 diluted at 1:1000



### GTx101490 WB Image

Sample (30 ug of whole cell lysate)

A: Jurkat

12% SDS PAGE

GTx101490 diluted at 1:1000



For full product information, images and publications, please visit our [website](https://www.genetex.com).