

# SOX2 antibody

**Cat. No. GTX101506**

<b>Host</b>	Rabbit
<b>Clonality</b>	Polyclonal
<b>Isotype</b>	IgG
<b>Application</b>	WB, ICC/IF, IHC-Fr, FACS
<b>Reactivity</b>	Human, Mouse

Reference ( 9 )  
 Package  
 100 µl, 25 µl

## APPLICATION

### Application Note

\*Optimal dilutions/concentrations should be determined by the researcher.

Suggested dilution	Recommended dilution
WB	1:500-1:3000
ICC/IF	1:100-1:1000
IHC-Fr	1:100-1:1000
FACS	1:50-1:200

Not tested in other applications.

**Calculated MW** 34 kDa. ( [Note](#) )

## PROPERTIES

<b>Form</b>	Liquid
<b>Buffer</b>	0.1M Tris, 0.1M Glycine, 10% Glycerol
<b>Preservative</b>	0.01% Thimerosal
<b>Storage</b>	Store as concentrated solution. Centrifuge briefly prior to opening vial. For short-term storage (1-2 weeks), store at 4°C. For long-term storage, aliquot and store at -20°C or below. Avoid multiple freeze-thaw cycles.
<b>Concentration</b>	1 mg/ml (Please refer to the vial label for the specific concentration.)
<b>Immunogen</b>	Recombinant protein encompassing a sequence within the center region of human SOX2. The exact sequence is proprietary.
<b>Purification</b>	Purified by antigen-affinity chromatography.
<b>Conjugation</b>	Unconjugated

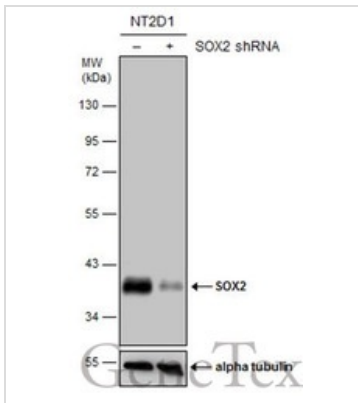
### Note

For laboratory research use only. Not for any clinical, therapeutic, or diagnostic use in humans or animals. Not for animal or human consumption.

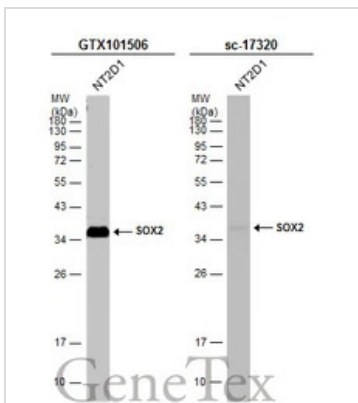
Purchasers shall not, and agree not to enable third parties to, analyze, copy, reverse engineer or otherwise attempt to determine the structure or sequence of the product.



For full product information, images and publications, please visit our [website](#).

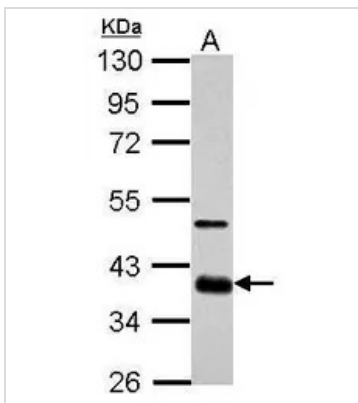
**DATA IMAGES**

**GTKX101506 WB Image**

Non-transfected (–) and transfected (+) NT2D1 whole cell extracts (30 µg) were separated by 10% SDS-PAGE, and the membrane was blotted with SOX2 antibody (GTKX101506) diluted at 1:1000. The HRP-conjugated anti-rabbit IgG antibody (GTKX213110-01) was used to detect the primary antibody.


**GTKX101506 WB Image**

Whole cell extract (30 µg) was separated by 12% SDS-PAGE, and the membranes were blotted with SOX2 antibody (GTKX101506) diluted at 1:1000 and competitor's antibody (sc-17320) diluted at 1:500. The HRP-conjugated anti-rabbit IgG antibody (GTKX213110-01) was used to detect the primary antibody, and the signal was developed with Trident ECL plus-Enhanced.

\*The competitor is not affiliated with GeneTex and does not endorse this product.


**GTKX101506 WB Image**

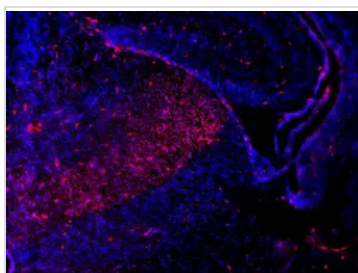
Sample (30 µg of whole cell lysate)

A: GL261

10% SDS PAGE

GTKX101506 diluted at 1:1000

The HRP-conjugated anti-rabbit IgG antibody (GTKX213110-01) was used to detect the primary antibody.


**GTKX101506 IHC-Fr Image**

Sox2 antibodies detects Sox2 proteins on embryonic mouse brain by immunohistochemical analysis.

Sample: Frozen section of embryonic mouse brain (mE18.5). Red: Sox2 antibody (GTKX101506) diluted at 1:500.

Blue: DAPI



For full product information, images and publications, please visit our [website](https://www.genetex.com).