

SOX2 antibody [N1C3]

Cat. No. GTX101507

| | |
|---------------------|--|
| Host | Rabbit |
| Clonality | Polyclonal |
| Isotype | IgG |
| Applications | WB, ICC/IF, IHC-P, IHC-Fr, FCM, IP |
| Reactivity | Human, Mouse, Rat, Frog, Ceratotherium simum |

References (80)

 Review (1)

Package

100 µl, 25 µl

PRODUCT

Summary

SOX2 antibody detects SOX2 protein, a basic helix-loop-helix transcription factor (predicted molecular weight of 34 kDa). SOX2 is an indispensable factor for regulating embryonic development and in the generation of inducible pluripotent stem (iPS) cells. It is also expressed in neural stem and progenitor cells. Dysregulation of SOX2 is associated with tumorigenesis.

Applications

Application Note

*Optimal dilutions/concentrations should be determined by the researcher.

| Suggested dilution | Recommended dilution |
|--------------------|----------------------|
| WB | 1:5000-1:20000 |
| ICC/IF | 1:100-1:1000 |
| IHC-P | 1:100-1:1000 |
| IHC-Fr | 1:100-1:1000 |
| FCM | 1:50-1:200 |
| IP | 1:100-1:500 |

Not tested in other applications.

Calculated MW 34 kDa. ([Note](#))

Properties

| | |
|----------------------|--|
| Form | Liquid |
| Buffer | PBS, 1% BSA, 20% Glycerol |
| Preservative | 0.025% ProClin 300 |
| Storage | Store as concentrated solution. Centrifuge briefly prior to opening vial. For short-term storage (1-2 weeks), store at 4°C. For long-term storage, aliquot and store at -20°C or below. Avoid multiple freeze-thaw cycles. |
| Concentration | 0.19 mg/ml (Please refer to the vial label for the specific concentration.) |
| Immunogen | Recombinant protein encompassing a sequence within the center region of human SOX2. The exact sequence is proprietary. |



For full product information, images and publications, please visit our [website](#).

Date 2025 / 07 / 18 Page 1 of 2

Purification Purified by antigen-affinity chromatography.

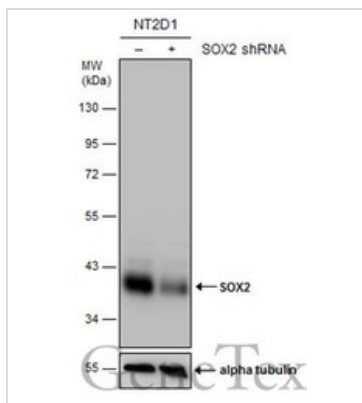
Conjugation Unconjugated

Note

For laboratory research use only. Not for any clinical, therapeutic, or diagnostic use in humans or animals. Not for animal or human consumption.

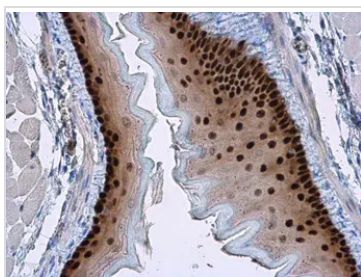
Purchasers shall not, and agree not to enable third parties to, analyze, copy, reverse engineer or otherwise attempt to determine the structure or sequence of the product.

DATA IMAGES



GTX101507 WB Image

Non-transfected (–) and transfected (+) NT2D1 whole cell extracts (30 µg) were separated by 10% SDS-PAGE, and the membrane was blotted with SOX2 antibody [N1C3] (GTX101507) diluted at 1:15000. The HRP-conjugated anti-rabbit IgG antibody (GTX213110-01) was used to detect the primary antibody.



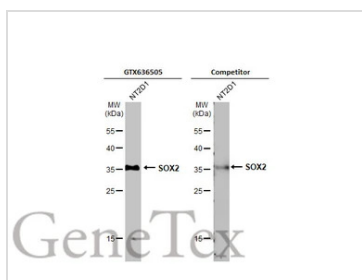
GTX101507 IHC-P Image

SOX2 antibody [N1C3] detects SOX2 protein at nucleus in mouse esophagus by immunohistochemical analysis.

Sample: Paraffin-embedded mouse esophagus.

SOX2 antibody [N1C3] (GTX101507) diluted at 1:500.

Antigen Retrieval: Citrate buffer, pH 6.0, 15 min



GTX101507 WB Image

Whole cell extract (30 µg) was separated by 12% SDS-PAGE, and the membranes were blotted with SOX2 antibody [N1C3] (GTX101507) diluted at 1:10000 and competitor's antibody (sc-17320) diluted at 1:1000. The HRP-conjugated anti-rabbit IgG antibody (GTX213110-01) was used to detect the primary antibody.

*The competitor is not affiliated with GeneTex and does not endorse this product.



For full product information, images and publications, please visit our [website](https://www.genetex.com).