

# CD19 antibody [C1C3]

**Cat. No. GTX101512**

|                    |                         |
|--------------------|-------------------------|
| <b>Host</b>        | Rabbit                  |
| <b>Clonality</b>   | Polyclonal              |
| <b>Isotype</b>     | IgG                     |
| <b>Application</b> | WB, ICC/IF, IHC-P, FACS |
| <b>Reactivity</b>  | Human, Mouse            |

Reference ( 3 )  
Package  
100 µl, 25 µl

## APPLICATION

### Application Note

\*Optimal dilutions/concentrations should be determined by the researcher.

| Suggested dilution | Recommended dilution |
|--------------------|----------------------|
| WB                 | 1:500-1:3000         |
| ICC/IF             | 1:100-1:1000         |
| IHC-P              | 1:100-1:1000         |
| FACS               | 1:50-1:200           |

Not tested in other applications.

**Calculated MW** 61 kDa. ( [Note](#) )

## PROPERTIES

|                      |                                                                                                                                                                                                                            |
|----------------------|----------------------------------------------------------------------------------------------------------------------------------------------------------------------------------------------------------------------------|
| <b>Form</b>          | Liquid                                                                                                                                                                                                                     |
| <b>Buffer</b>        | PBS, 1% BSA, 20% Glycerol                                                                                                                                                                                                  |
| <b>Preservative</b>  | 0.025% ProClin 300                                                                                                                                                                                                         |
| <b>Storage</b>       | Store as concentrated solution. Centrifuge briefly prior to opening vial. For short-term storage (1-2 weeks), store at 4°C. For long-term storage, aliquot and store at -20°C or below. Avoid multiple freeze-thaw cycles. |
| <b>Concentration</b> | 0.21 mg/ml (Please refer to the vial label for the specific concentration.)                                                                                                                                                |
| <b>Immunogen</b>     | Recombinant protein encompassing a sequence within the Intracellular domain of human CD19. The exact sequence is proprietary.                                                                                              |
| <b>Purification</b>  | Purified by antigen-affinity chromatography.                                                                                                                                                                               |
| <b>Conjugation</b>   | Unconjugated                                                                                                                                                                                                               |

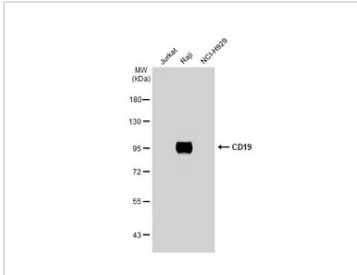


For full product information, images and publications, please visit our [website](#).

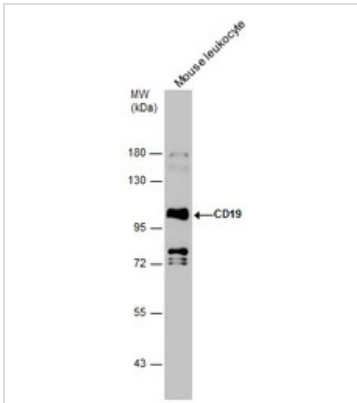
For laboratory research use only. Not for any clinical, therapeutic, or diagnostic use in humans or animals. Not for animal or human consumption.

**Note**

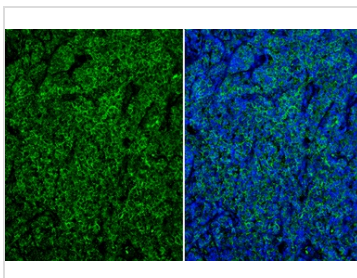
Purchasers shall not, and agree not to enable third parties to, analyze, copy, reverse engineer or otherwise attempt to determine the structure or sequence of the product.

**DATA IMAGES**

**GTX101512 WB Image**

Various whole cell extracts (30 µg) were separated by 7.5% SDS-PAGE, and the membrane was blotted with CD19 antibody [C1C3] (GTX101512) diluted at 1:1000. The HRP-conjugated anti-rabbit IgG antibody (GTX213110-01) was used to detect the primary antibody.


**GTX101512 WB Image**

Mouse tissue extract (50 µg) was separated by 7.5% SDS-PAGE, and the membrane was blotted with CD19 antibody [C1C3] (GTX101512) diluted at 1:1000.


**GTX101512 IHC-P Image**

CD19 antibody [C1C3] detects CD19 protein at cell membrane and cytoplasm by immunohistochemical analysis.

Sample: Paraffin-embedded human tonsil.

Green: CD19 stained by CD19 antibody [C1C3] (GTX101512) diluted at 1:250.

Blue: Fluoroshield with DAPI (GTX30920).

Antigen Retrieval: Citrate buffer, pH 6.0, 15 min



For full product information, images and publications, please visit our [website](https://www.genetex.com).